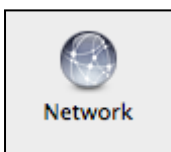


How to connect to the ECU Virtual Private Network (VPN) with Mac OS X 10.6 (Snow Leopard)

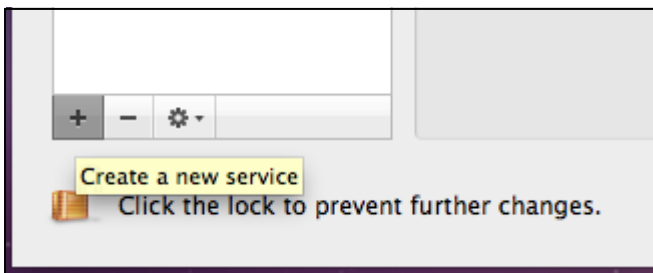
1. Open **System Preferences**, from the Dock or from the Apple menu.



2. Select the **Network** System Preference.



3. Click on the + sign at the bottom left hand corner of the **Network Preferences** window.



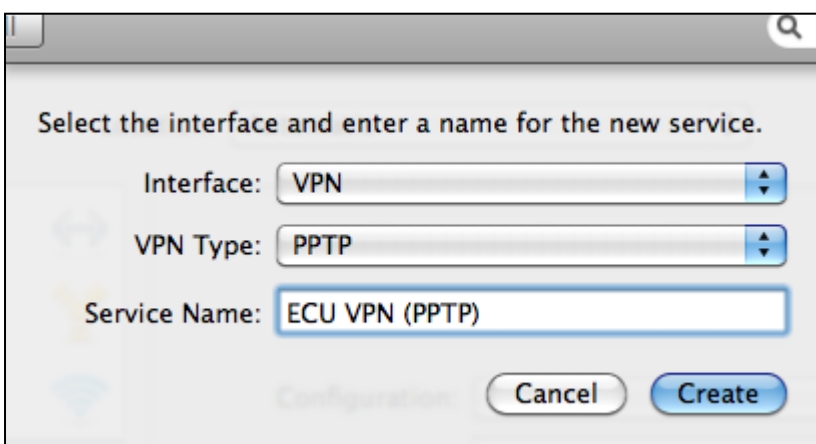
4. Enter the following details for the new Service.

Interface: VPN

VPN Type: PPTP

Service Name: ECU VPN (PPTP)

Then click **Create**.



5. Select **ECU VPN (PPTP)** from left pane and enter the following information:

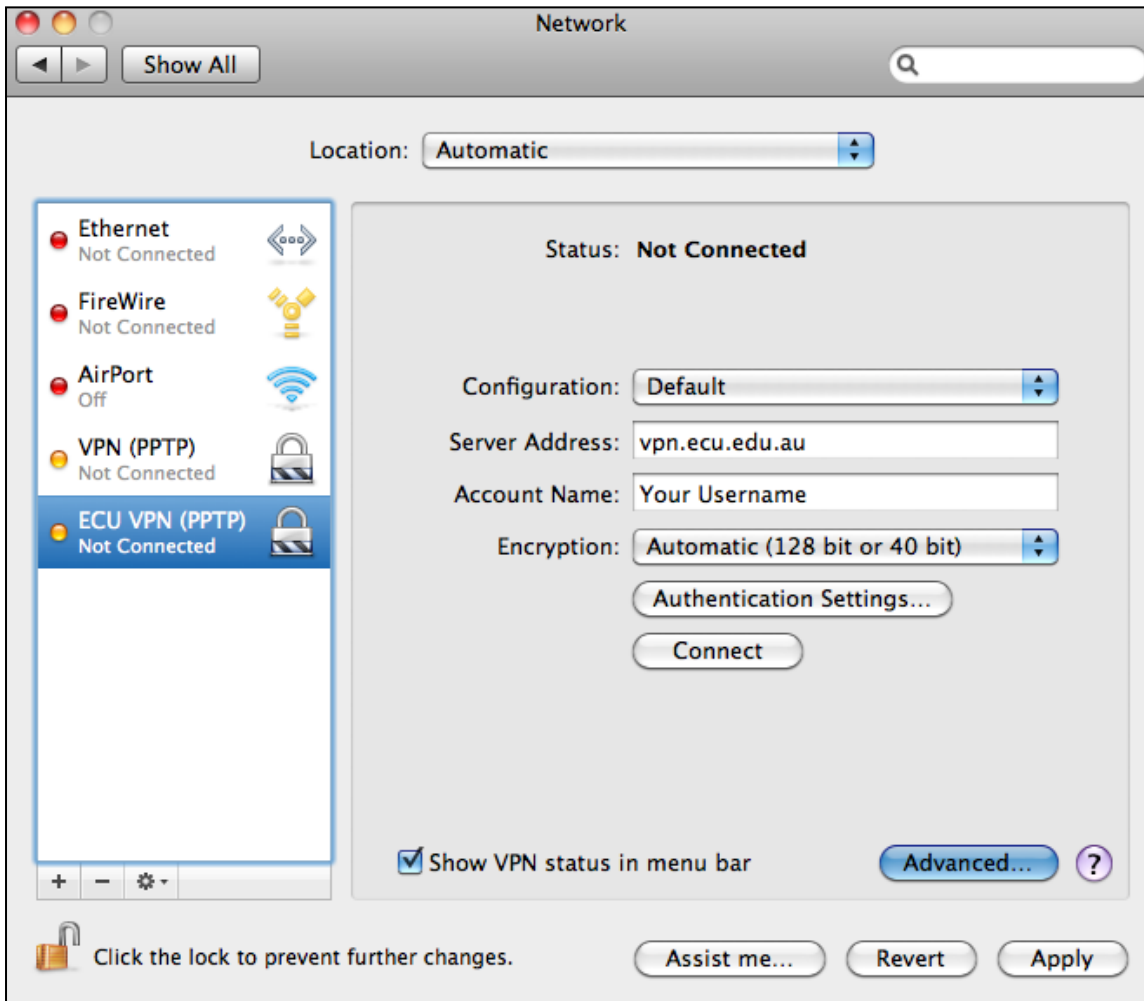
Location: *Automatic*

Server Address: *vpn.ecu.edu.au*

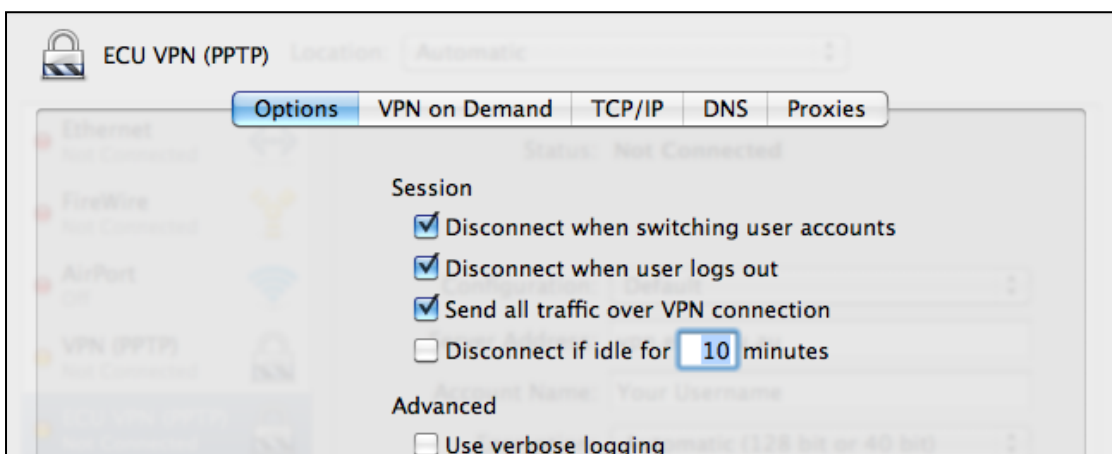
Account Name: *YOUR ECU Username*

Tick the box “**Show VPN status bar in menu bar**”

Click **Apply** Button and then click the **Advanced** Button

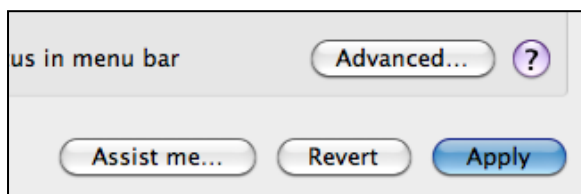
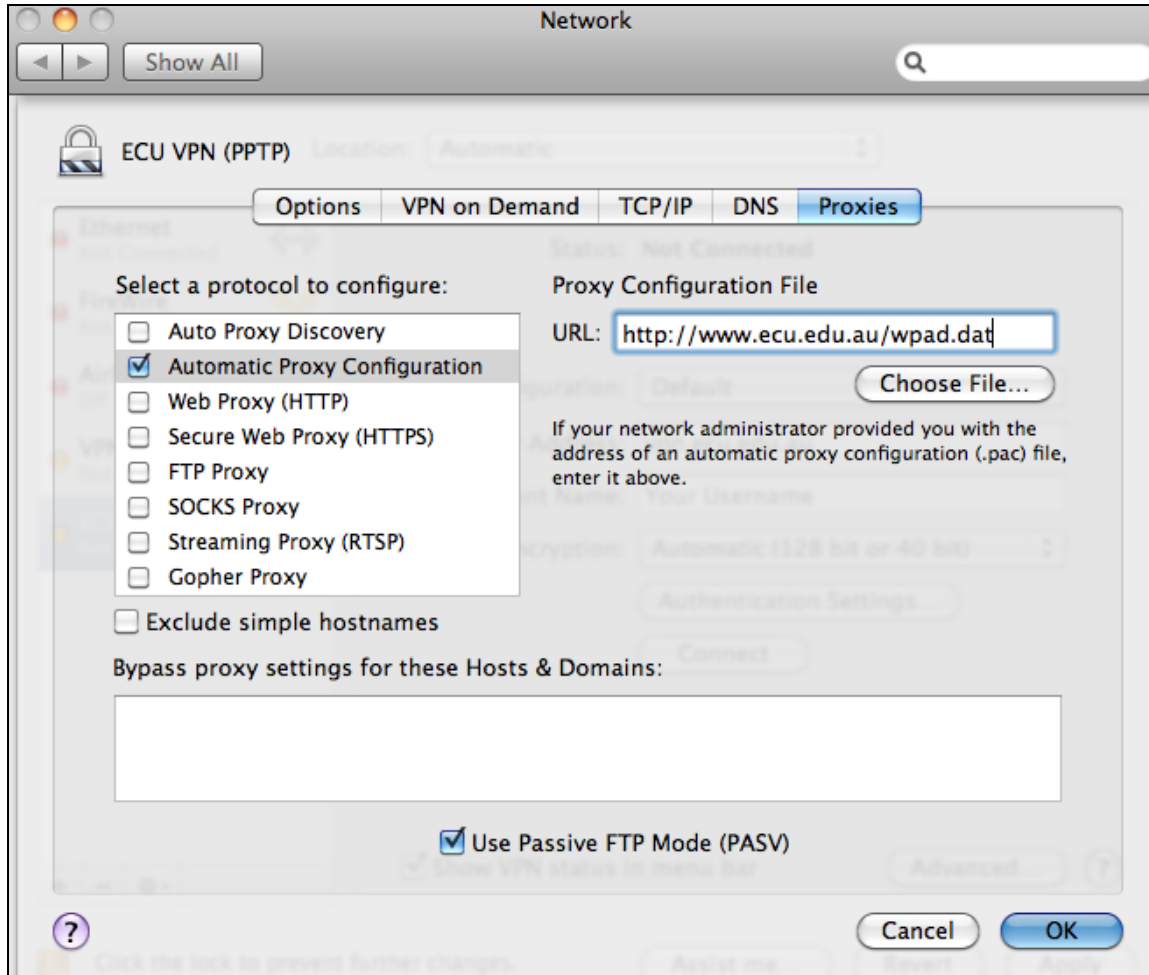


6. Select the **Options Tab** and ensure that **Send all traffic over VPN Connection** is ticked.



7. Click on the **Proxies** tab and tick **Automatic Proxy Configuration** checkbox. Enter **URL** as:
<http://www.ecu.edu.au/wpad.dat>

Click **OK** and click **Apply**.



8. Close the System Preferences window.

9. To connect to the VPN, click on the VPN icon on the main task bar and select **Connect ECU VPN(PPTP)**. (Enter your Password when prompted.)

