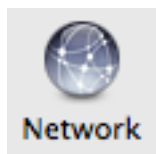


## How to connect to the ECU Virtual Private Network (VPN) with Mac OS X 10.5 (Leopard)

1. Open **System Preferences**, from the Dock or from the Apple menu.



2. Select the **Network** System Preference



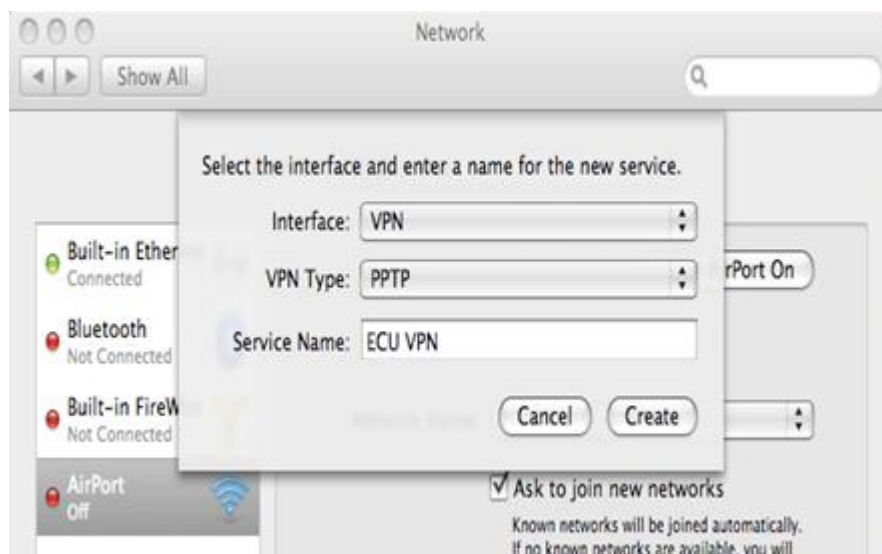
3. Click on the **+** sign at the bottom left hand corner of the **Network Preferences** window



4. Enter the following details for the new Service.

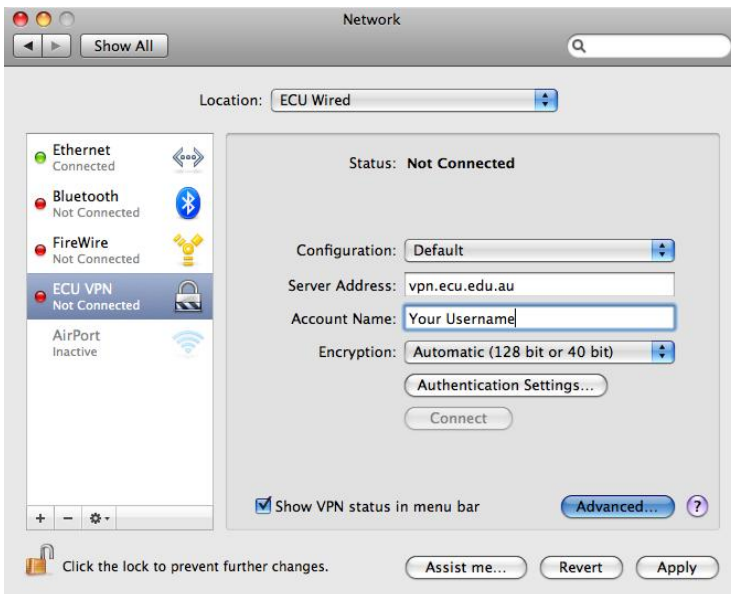
**Interface:** VPN  
**VPN Type:** PPTP  
**Service Name:** ECU VPN

Then click **Create**.



5. Select **ECU VPN** from left pane and enter the following information:

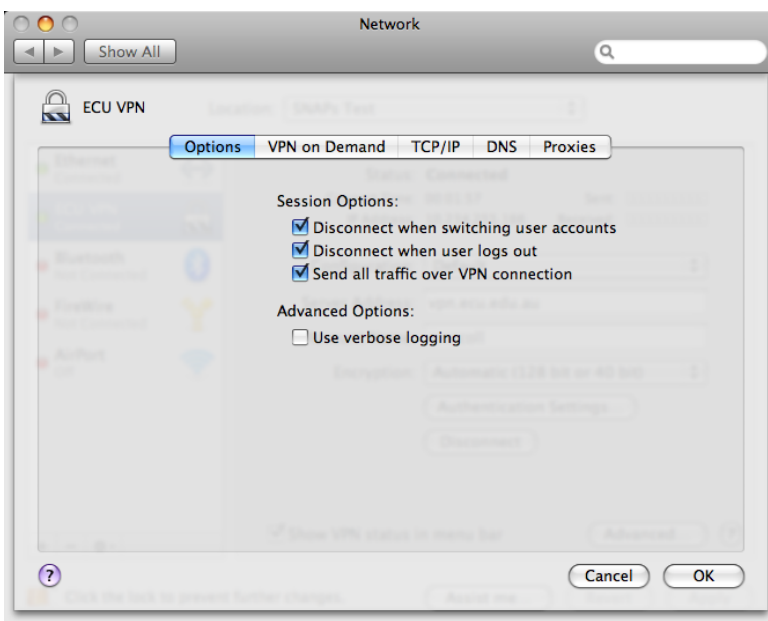
- Location:** Automatic
- Configuration:** ECU VPN
- Server Address:** vpn.ecu.edu.au
- Account Name:** YOUR ECU Username



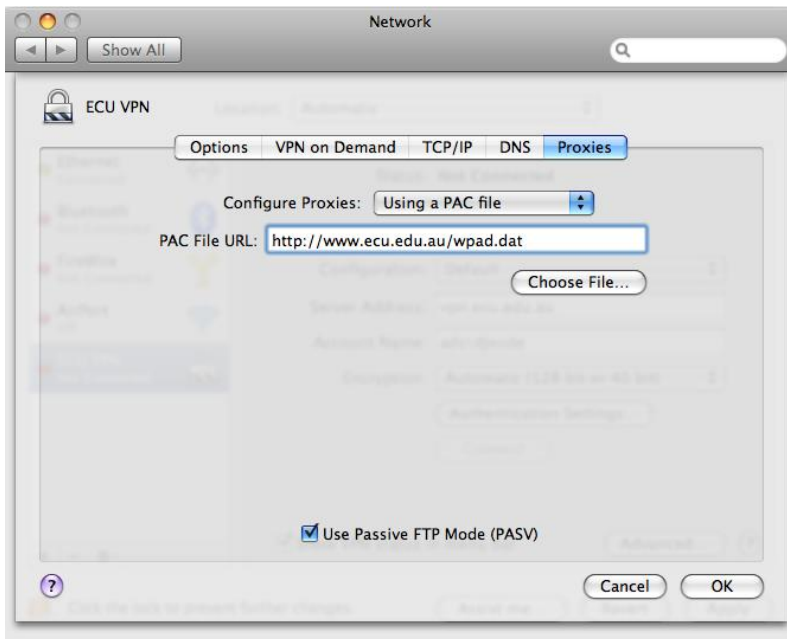
6. Tick the box “**Show VPN status bar in menu bar**”

7. Click the **Advanced** Button

8. Select the **Options** Tab and ensure that **Send all traffic over VPN Connection** is ticked.



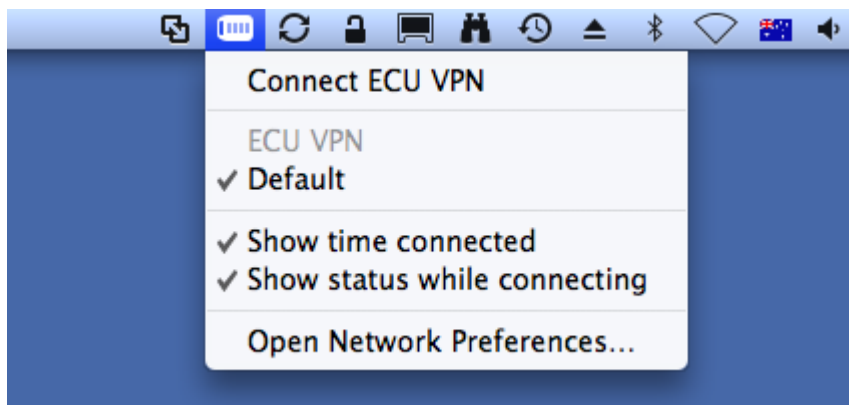
- Click on the **Proxies** tab and under **Configure Proxies** select **Using a PAC file**.  
Enter the **PAC File URL** as: <http://www.ecu.edu.au/wpad.dat>



- Click **OK** & Click **Apply**

- Close the System Preferences window

To connect to the VPN, click on the VPN Icon on the main task bar and select **Connect ECU VPN**.



Enter your Password when prompted.