

UNDERGRADUATE ADMISSIONS

EDITH COWAN UNIVERSITY
A Guide to 2013 Entry



ECU. THE JOURNEY BEGINS.

Life is full of journeys.

From childhood to adulthood. School to uni. Starting your first job to advancing your career. All of these journeys require a clear path to help ensure they go in the direction you want them to go.

So, when we say the road is open at ECU, we're reflecting our commitment to ensuring that the obstacles and barriers that sometimes get in the way, can be effectively managed and overcome.

Your journey is unique. It reflects your personal hopes and aspirations. Because the road is open at ECU, we can help you realise your ambitions and reach your destination, wherever that may be.





CONTENTS

PATHWAYS TO ECU	4
APPLYING TO ECU	6
SCHOOL LEAVERS	8
MATURE AGE	9
YEAR 10 STUDENTS	9
ENGLISH COMPETENCY	10
PORTFOLIO ENTRY PATHWAY	11
UNIVERSITY PREPARATION COURSES	12
INTERNATIONAL APPLICANTS	14
MORE INFORMATION	15

PATHWAYS TO ECU

At ECU, we want people from all backgrounds to have the opportunity to obtain a university education, that's why we've created a range of innovative entry options. We have entry pathways available for school leavers, recent school leavers and mature age applicants, and we provide the support and flexibility to anyone wanting to start their journey in further education.

ATAR

Australian Tertiary Admission Rank (ATAR) is a ranking based on eligible subjects studied in year 12. As an ATAR student seeking entry, you must meet the following entry requirements:

- English competency (WACE Course Stage 2 or above)
- Minimum ATAR for the course you wish to study
- Requirements of the Western Australian Certificate of Education (WACE)
- Any prerequisites for the course that you wish to apply for

If you think you may not achieve the required ATAR for the course you wish to study, you should consider submitting a portfolio of your work via our Portfolio entry pathway.

NON-ATAR

School leavers (including those who have left school in the last two years) and mature age students who will not generate an ATAR may be able to apply using our Portfolio entry pathway.

PORTFOLIO PATHWAY

Our Portfolio entry pathway assesses your application to ECU based on a portfolio of evidence that includes your qualifications, work and life experiences. **See page 11 for full details on this entry pathway.**

UNIVERSITY PREPARATION COURSES (UPCs)

We have a range of preparation courses that provide a pathway to many of our courses. These courses assist you in improving your study skills and increasing your knowledge. **See page 12 for full details on these courses.**

PREVIOUS STUDY AT A REGISTERED TRAINING ORGANISATION (RTO)

If you have successfully completed RTO / Vocational Education and Training qualifications from a recognised institution (for example, a Certificate IV or Diploma), you may be able to use this study to fulfil minimum admission requirements into one of our undergraduate courses or University Preparation Courses. The level of course that you are eligible for depends on the level of award that you have already completed.

PREVIOUS TERTIARY QUALIFICATIONS

If you have successfully completed units at university level in Australia, you may meet the minimum entry requirements into ECU. Overseas university qualifications may also meet requirements, however you may require the successful completion of a recognised English examination.

SPECIAL TERTIARY ADMISSIONS TEST (STAT)

This national test is designed to assess aptitude for learning in a tertiary environment. It comprises two tests, written English and multiple choice, and is available for mature age students, over 20 years of age. For more information on the STAT, visit www.tisc.edu.au

INDIGENOUS STUDENT INTAKE TEST (ISIT)

This assessment is for Aboriginal and Torres Strait Islander applicants for entry into our preparation and undergraduate courses.

ENGLISH COMPETENCY REQUIREMENTS

In addition to any academic or other special requirements, applicants must demonstrate English competency.

See page 10 for full details.

For more information, visit:

www.reachyourpotential.com.au/entry

www.reachyourpotential.com.au/minimum-requirements

The ME Project.com.au

Imagine if someone could show you how all the stuff in your room could lead you to an amazing future. This is what 'The ME Project' does.

Just upload a shot of your stuff, and our team will tag it with potential uni courses that we think you'll love. So jump onto theMEproject.com.au and check it out.

Upload your room,

download a future.

APPLYING TO ECU

Your application process will differ depending on your entry pathway and the time of year that you apply. To find out which process applies to you, visit www.reachyourpotential.com.au/entry



APPLICATIONS VIA TISC

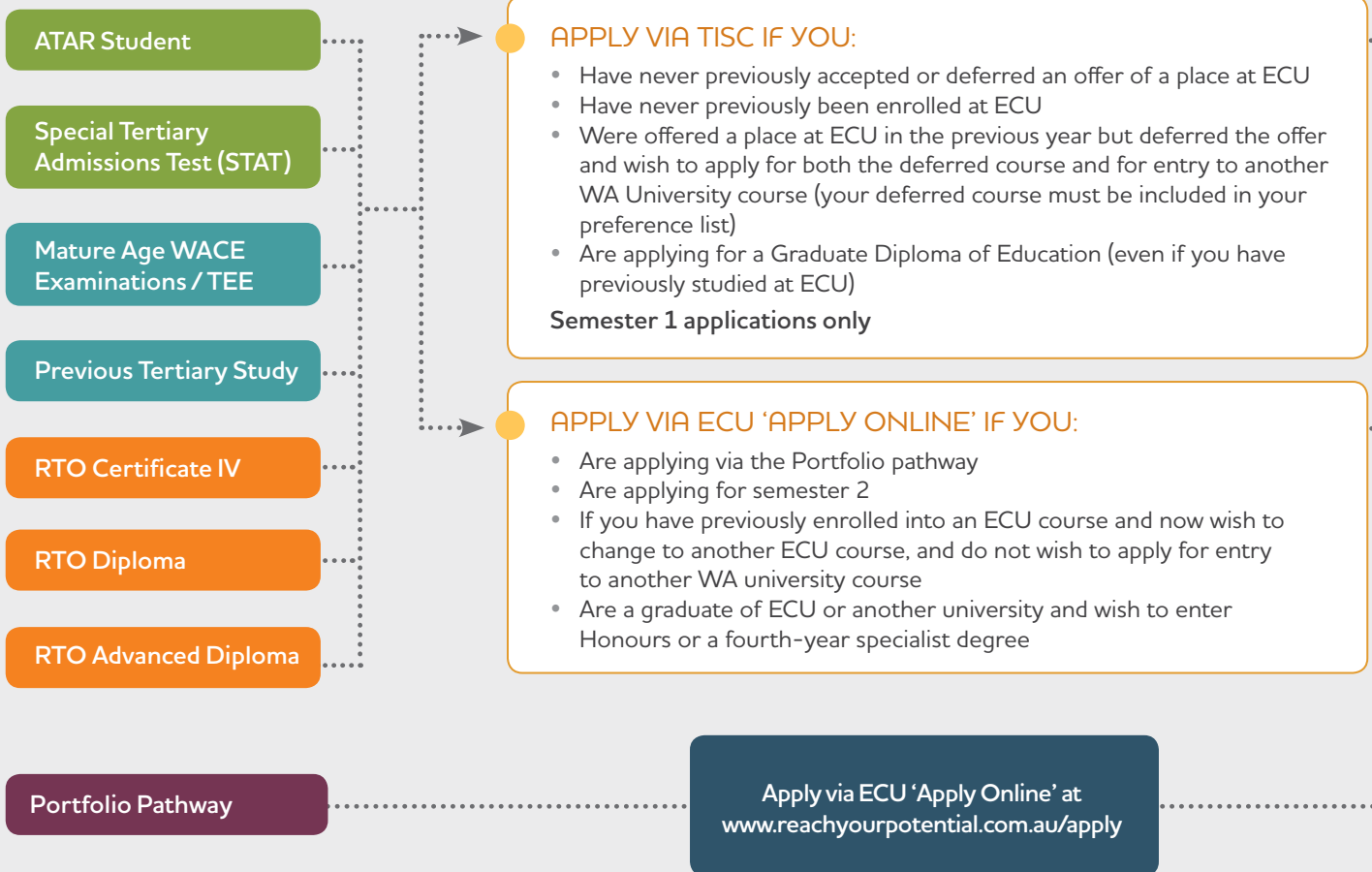
Many applicants for undergraduate courses commencing in 2013 will apply via the Tertiary Institutions Service Centre (TISC), including school leavers with an ATAR and mature age students with no previous enrolment at ECU. If you are a student with an ATAR, who also wishes to have a portfolio assessed, apply through TISC but send your portfolio to us by 30 November 2012 to be guaranteed consideration for first round offers in 2013. For more information about TISC, visit www.tisc.edu.au

DIRECT APPLICATIONS

You can apply to ECU directly by using our online application process at www.reachyourpotential.com.au/apply

The direct application process is available to:

- School leavers who will not achieve an ATAR and wish to apply via our Portfolio entry pathway
- Mature age students who wish to apply via our Portfolio entry pathway
- Those who have previously studied with ECU
- Those applying for mid-year entry



Note: Applicants for the Bachelor of Music, Bachelor of Education – Secondary (Music) or Bachelor of Arts Management must apply through TISC AND submit an Application for Audition/Interview directly to WAAPA. Applicants for all other WAAPA courses must apply directly to the WAAPA Admissions Office.

Note: Some courses open for mid-year (Semester 2) entry may have conditions. These might include restricted campus offerings or the mode in which the course can be studied. Please check www.reachyourpotential.com.au/midyear for more information or speak to one of our Student Recruitment Officers on 134 ECU (134 328).

Note: Some courses do not accept applications through the Portfolio entry pathway. For a list of these courses and more information on the Portfolio entry pathway, visit www.reachyourpotential.com.au/entry

For school leavers who wish to be considered for first round offers in 2013, please submit your application and portfolio to us by 30 November 2012. If you require assistance with a direct application, you are welcome to visit our Joondalup, Mount Lawley or Bunbury campuses and complete your application with us on-site or call us on 134 ECU (134 328).

INTERVIEWS, FOLIOS AND AUDITIONS

Some of our courses require an interview, folio of work and/or audition. You can check the Admission Requirements of the course you are interested in to see if this applies to you.

- The format and structure of the interview, folio of work or audition can change dependent on the specific course you are applying for.
- In general, in an interview situation, staff interviewing you will be looking for a demonstration of abilities and cognitive skills in areas appropriate to the course.
- Staff assessing your folio of work or audition will usually be looking for a demonstration of abilities and/or skills appropriate to the course.
- If your application meets the course admission requirements, we will contact you to arrange an audition, interview or submission of your folio of work.

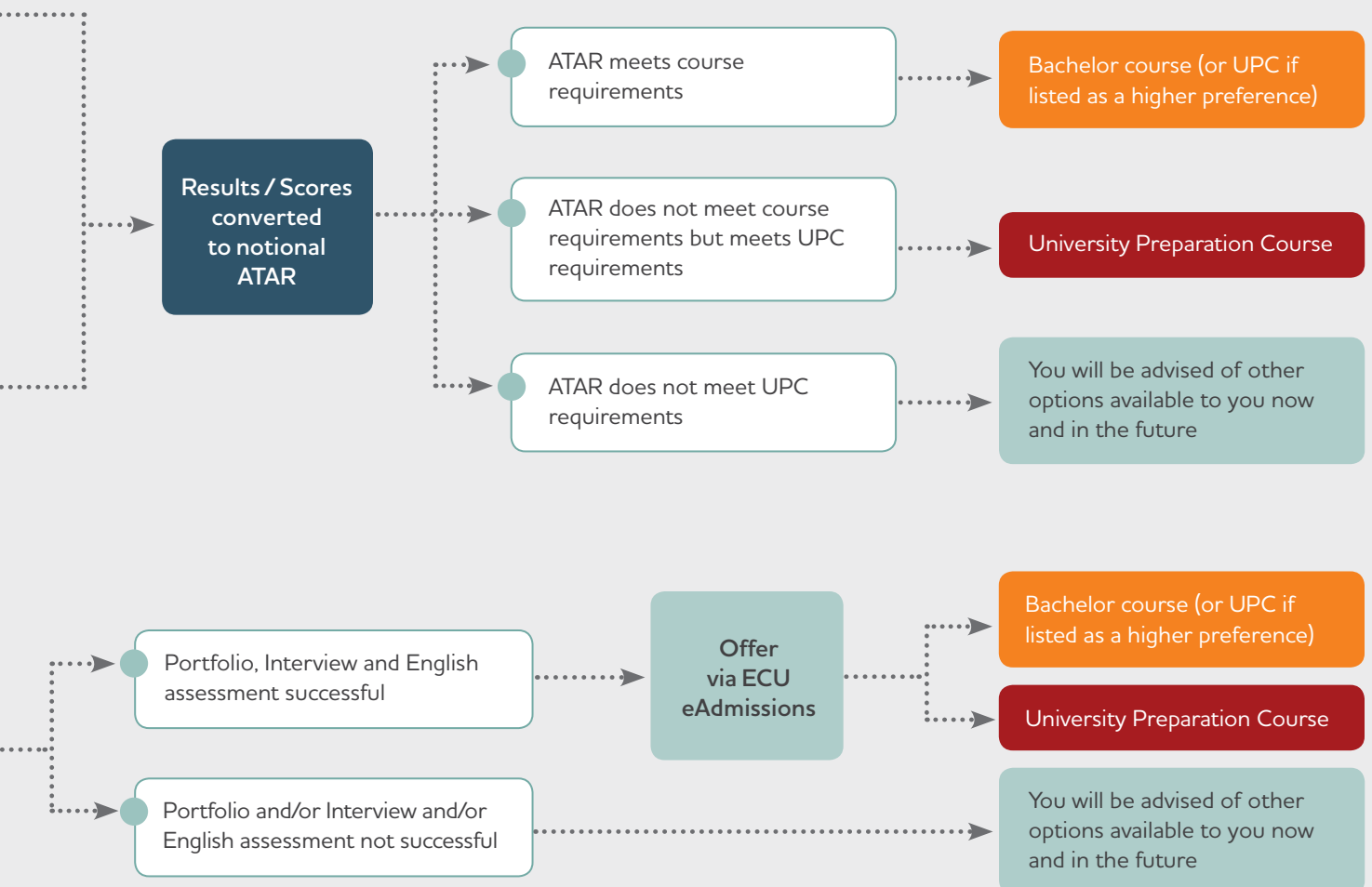
To find out more, visit www.reachyourpotential.com.au/interviews

WESTERN AUSTRALIAN ACADEMY OF PERFORMING ARTS (WAAPA)

The courses offered at WAAPA require applicants to complete an interview, audition and/or submit a folio of work, as part of the selection process. Admission to the Bachelor programs at WAAPA also requires applicants meet the ECU academic entrance requirements. If you are interested in applying to WAAPA, it is recommended that you attend the WAAPA Open Day to receive all the information you need regarding the folio and audition process. Information is also available on the WAAPA web site, visit www.waapa.ecu.edu.au

For more information, visit:

www.reachyourpotential.com.au/entry
www.reachyourpotential.com.au/apply



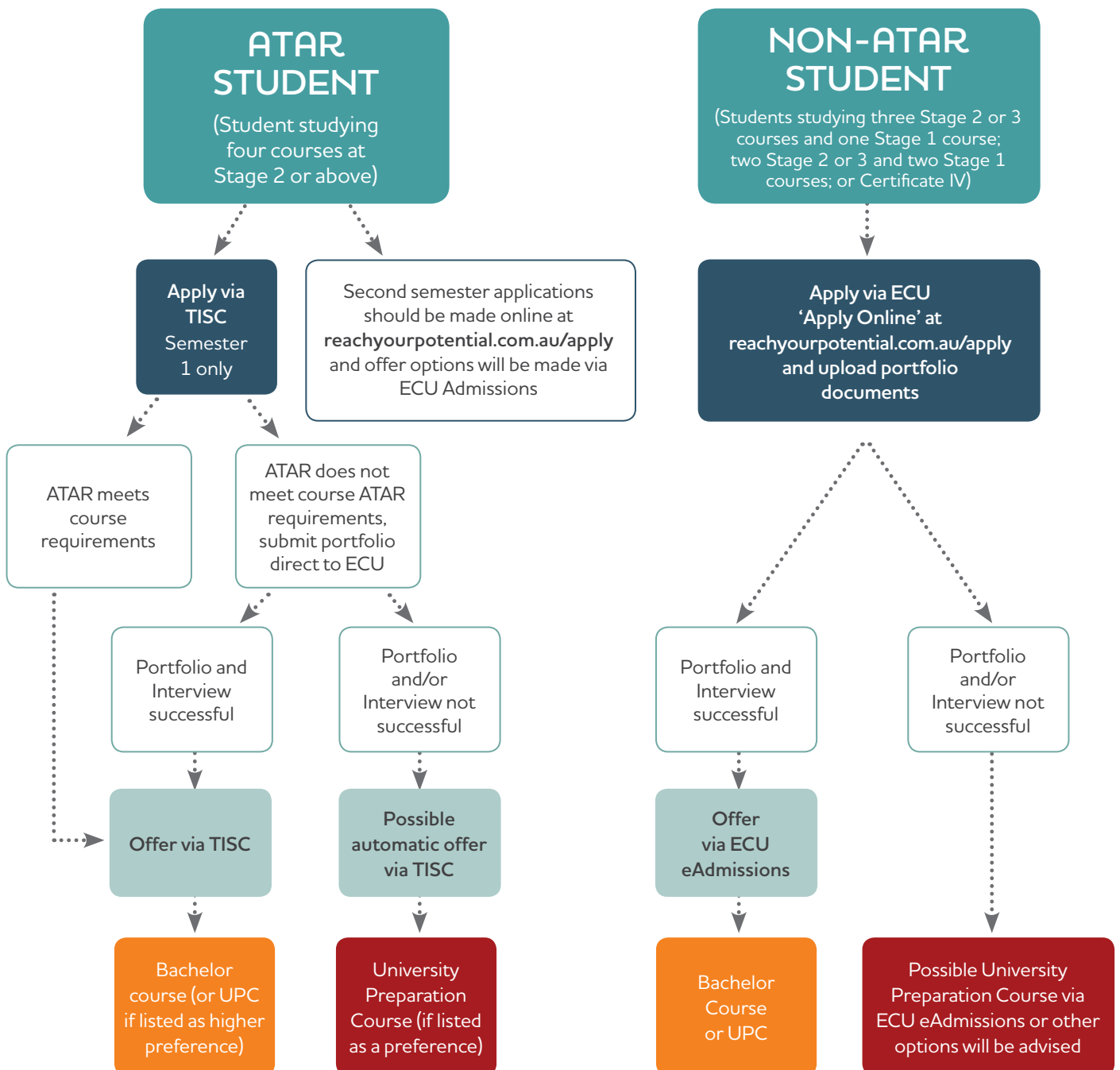
- * RTO: Registered Training Organisation
- * UPC: University Preparation Course (see page 12)
- * WACE: Western Australian Certificate of Education
- * ATAR: Australian Tertiary Admission Rank
- * TEE: Tertiary Entrance Examination

SCHOOL LEAVERS



Before selecting the entry pathway most suitable for you, it is important that you ensure you meet the following:

- English Competency requirements (see page 10 for more information)
- Requirements of the Western Australian Certificate of Education (WACE)
- Indicative ATAR for the course you wish to study (ATAR students only)
- Any subject prerequisites relevant to the course for which you wish to apply
- Any folio of work, audition or interview requirements if you are applying for one of our courses by portfolio entry



Note: See application and entry conditions listed on page 6 below the diagram.

MATURE AGE

Before selecting the entry pathway most suitable for you, it is important to ensure you meet the following:

- English Competency requirements (see page 10 for more information)
- Indicative ATAR for the course you wish to study (ATAR students only)
- Any subject prerequisites relevant to the course for which you wish to apply
- Any folio of work, audition or interview requirements if you are applying for one of our courses by portfolio entry

Refer back to the diagram on page 6 for the mature age entry pathway processes.

YEAR 10 STUDENTS

WHAT SUBJECTS SHOULD YOU STUDY?

Choosing your study path for year 11 and year 12 goes hand in hand with the course(s) you're hoping to list as TISC preferences. Here are some handy tips to help you make these choices:

1. You'll need to make sure you are studying the right level of English to meet our English Competency requirements. You are strongly encouraged to study Stage 3 English, Literature or EALD courses in year 12. We do, however, have a range of options based on the English you may study in year 12 (see page 10).
2. If there is a prerequisite Stage 3 course for the course you are interested in, you'll need to ensure you're studying the right WACE courses in years 11 and 12. If there are other admission requirements for the course (completing an audition, submitting a folio of work or undertaking an interview), you'll need to ensure you're on track to fulfil these.
3. When you're in year 12, work hard to achieve the highest ATAR you possibly can achieve to ensure you are competitive for the course you're hoping to study.

GET TO KNOW YOUR OPTIONS

We run a range of Future Student Information Evenings throughout the year. These evenings will give you all the information you need to make an informed choice about studying, admission, entry pathway options, subject selection and much more.

We also run study area specific information evenings throughout the year, where staff who teach in related courses will discuss their course structures, career outcomes and what the course involves. These events will give you information about all of the courses within a study area and help you to select the right course to meet your career aims, e.g. Education, Engineering, Nursing and Law.

For more information and to register for upcoming events, visit www.reachyourpotential.com.au/events

We consider each application on its merits. As there are less places available than applicants for some courses, you may not be offered a place even if you meet the minimum entry requirements. If you don't receive an offer of a place or you do not meet the entry requirements, we can advise you of other options that are available to you.

ENGLISH COMPETENCY

This page outlines ECU's minimum English competency requirements for those seeking entry to undergraduate courses e.g. Associate degrees, Bachelor degrees and University Preparation Courses (UPCs). It is important to note that there may be other requirements to achieve entry into the course of your choice.

For more information, visit www.reachyourpotential.com.au/minimum-requirements

WACE COURSES

English

Literature

English as an Additional Language/Dialect

Entry to Undergraduate Course	Entry to University Preparation Courses (UPCs)
You must have achieved: <ul style="list-style-type: none"> • A scaled mark of at least 50, or • A final school letter grade of A, B, or C in two English or Literature or English as an Additional Language/Dialect units studied in year 12 at Stage 2 or above, or • A final school level of 5 or greater in English course studies in year 12 (2007 school leavers only) 	You must have achieved: <ul style="list-style-type: none"> • A scaled mark of at least 50, or • A final school letter grade of A, B, or C in one English or Literature or English as an Additional Language/Dialect units studied in year 12 at Stage 2 or above, or • A final school letter grade of A in 1C and 1D English or Literature or English as an Additional Language/Dialect units studied in year 12, or • A final school level of 4 or greater in English course studied in year 12 (2007 school leavers only)

TEE SUBJECTS

TEE English

TEE English Literature

Entry to Undergraduate Course	Entry to University Preparation Courses (UPCs)
You must have achieved: <ul style="list-style-type: none"> • A final scaled mark of at least 50, or • A final school letter grade of A, B or C studied in year 12 	You must have achieved: <ul style="list-style-type: none"> • A final scaled mark of at least 50, or • A final school letter grade of A, B or C studied in year 12

TEE English as a Second Language

Entry to Undergraduate Course	Entry to University Preparation Courses (UPCs)
You must have achieved: <ul style="list-style-type: none"> • Satisfactory level of achievement as set by ECU in the year in which the subject was completed 	You must have achieved: <ul style="list-style-type: none"> • Satisfactory level of achievement as set by ECU in the year in which the subject was completed

WHOLLY SCHOOL ASSESSED SUBJECT

Senior English

Entry to Undergraduate Course	Entry to University Preparation Courses (UPCs)
You must have achieved: <ul style="list-style-type: none"> • A final school letter grade of A studied in year 12 	You must have achieved: <ul style="list-style-type: none"> • A final school letter grade of A, B or C studied in year 12

SPECIAL TERTIARY ADMISSIONS TEST (STAT)

Entry to Undergraduate Course	Entry to University Preparation Courses (UPCs)
You must have achieved: <ul style="list-style-type: none"> • 145 or greater on the STAT Written English Test if you sat the STAT prior to February 2010 • 140 or greater on the STAT Written English Test if you sat the STAT after February 2010 	You must have achieved: <ul style="list-style-type: none"> • 125 or greater on the STAT Written English Test if you sat the STAT prior to February 2010 • 110 or greater on the STAT Written English Test if you sat the STAT after February 2010

PORTFOLIO ENTRY ENGLISH ASSESSMENT (FOR MATURE AGE APPLICANTS ONLY)

Entry to Undergraduate Course	Entry to University Preparation Courses (UPCs)
You must have achieved: <ul style="list-style-type: none"> • Satisfactory performance as determined by assessor 	You must have achieved: <ul style="list-style-type: none"> • Satisfactory performance as determined by assessor

PORTFOLIO ENTRY PATHWAY

Our Portfolio entry pathway assesses your application to ECU based on a portfolio of evidence that includes your qualifications, school results, work and life experiences. It allows applicants to be considered for entry to undergraduate courses and University Preparation Courses.

The Portfolio entry pathway caters for:

- School leavers with a near-miss ATAR for their chosen course
- School leavers who will not/did not obtain an ATAR
- School leavers from recent years who completed TEE and/or WACE courses and/or wholly school-assessed subjects
- Mature age applicants, who are over 20 years of age in the semester they commence studies, who may or may not have completed year 12

WHAT DO YOU NEED TO PROVIDE IN A PORTFOLIO APPLICATION?

You need to include an introductory letter, a resumé, two written references and copies of any certificates, awards or academic records. You may also be asked to attend an interview as part of the assessment.

- **Introductory letter** – This should be an explanation of why you want to attend ECU, the reasons and motivation behind the course you have chosen, and your future career goals. Your letter should reflect your commitment, preparation to study and motivation to be successful.
- **Resumé** – Your resumé should outline your education and work experience to date. It should include details of paid work and any voluntary positions you have filled.
- **References** – You should include a minimum of two written references, with at least one of these referees being a professional, work and/or school reference.
- **Academic records** – Should include: secondary schooling, TAFE/Registered Training Organisation (RTO) qualifications, Industry training/accreditation, workplace training. For Semester 1 entry, school leavers are required to provide their most recent school reports.
- **Other records** – Include other relevant documents related to extra curricular activities such as leadership programs, sports coaching and umpiring accreditation.

REQUIREMENTS FOR PORTFOLIO ENTRY

School leavers – Applicants must meet ECU's English Competency requirements, the requirements of the Western Australian Certificate of Education (WACE), the prerequisites required for the particular course being applied for, and have studied:

- A minimum of four ECU approved subjects/courses in year 12 (at least 2 WACE courses must be undertaken at Stage 2 or above), or
- Successfully completed a Certificate IV in year 12

Mature age – Applicants must meet the prerequisites required for the particular course being applied for. Your application will be also assessed in terms of your previous qualifications and education, such as:

- ATAR (TER) achieved in a previous year
- Qualifications achieved through Registered Training Organisations (RTO)
- Other appropriate experience showing the ability to be successful in university studies

Mature age applicants must also display an ability to meet ECU's English Competency requirements through previous studies or via a writing task.

APPLYING

You need to submit your application and documentation directly to us, using our online admission system. If you are a school leaver who will achieve an ATAR, who also wishes to have a portfolio assessed, you will need to apply through TISC but send your portfolio directly to us. A portfolio cover sheet is available for download on our website.

Note: Some courses do not accept applications through the Portfolio entry pathway. For a list of these courses and more information on applying through our Portfolio entry pathway, visit www.reachyourpotential.com.au/entry



UNIVERSITY PREPARATION COURSES (UPCs)

At ECU, we understand that everyone deserves an opportunity to reach their potential. We offer four preparation courses, two are more general courses:

- University Preparation Course (UPC)
- Indigenous University Orientation Course (IUOC) – a specialised entry pathway for Australian Indigenous school leavers

Our other two specialist UPCs are aimed at people who either wish to become an Education Assistant or who are already working in the field:

- University Preparation Course (Education Assistant Program)
- University Preparation Course (Education Assistant: Special Needs)

Our UPCs are not open to everyone. They have entry requirements which vary depending on whether you are a school leaver or mature age student. Australian Citizens, holders of a Permanent Humanitarian Visa, Permanent Residents and New Zealand Citizens are eligible to study in a Commonwealth Supported Place, making these courses free, with no up-front or deferred tuition fee. International students studying with an International Student visa are not eligible for the UPCs, however our International Office can provide information on equivalent preparation courses, visit www.reachyourpotential.com.au/international

For information on the pathways and admission requirements into to the UPCs, visit www.reachyourpotential.com.au/entry

UNIVERSITY PREPARATION COURSE (UPC)

If you're not eligible to apply for an undergraduate degree directly, or you would like to do some preparatory studies before commencing your undergraduate studies, you can use our UPC as a pathway to our undergraduate courses. Open to school leavers and mature age applicants, the UPC prepares you for university level study by teaching the required skills for academic success.

The UPC is offered at all ECU campuses and comprises of four units, with three compulsory units and a choice for the fourth. On successful completion of the UPC, students are then eligible for entry to a wide range of undergraduate courses at ECU, dependent on prerequisites, minimum entry requirements and available places.

For further course information, visit reachyourpotential.com.au/courses/C28

UNIVERSITY PREPARATION COURSE (EDUCATION ASSISTANT PROGRAM)

This specialist entry program provides an alternative pathway to selected undergraduate teaching degrees at ECU. It prepares students for university level study by teaching the required skills for academic success. The course is designed to enable students to understand, as education assistants, how they can effectively support teachers in facilitating children's learning in early childhood, primary or secondary school settings. The course is suitable for those contemplating working as education assistants, current education assistants who have experience and are seeking professional development, and those wishing to pursue further studies in teaching who may wish to use the course as an entry pathway into university.

The course begins in January or mid-year and classes are delivered over weekends at the Joondalup campus. Successful completion of the course provides students with eligibility for employment as Education Assistants or can be used as an alternative entry pathway into to a wide range of undergraduate courses, dependent on prerequisites, minimum entry requirements and available places.

For further course information, visit reachyourpotential.com.au/courses/C20



UNIVERSITY PREPARATION COURSE (EDUCATION ASSISTANT: SPECIAL NEEDS)

This specialist entry program provides an alternative pathway to selected undergraduate teaching degrees at ECU. It prepares students for university level study by teaching them the required skills for academic success. Skills will be developed over four units of study, which will enable students to work with learners with a wide range of specific learning needs. Students will develop knowledge, skills and an understanding of the classroom, as well as curriculum support skills required to work as an educational assistant with special needs learners in educational contexts from kindergarten to secondary level. Specific disabilities to be investigated will include learning, intellectual and physical disabilities. Professional skills and knowledge included in this course will increase students' academic writing, referencing and professional presentation skills to support entry to university.

The course begins in January or mid-year and classes are delivered over weekends at the Mount Lawley campus.

Students are required to complete practicum placement(s) as part of this course and will be placed in an educational setting working with learners with special education needs. Successful completion of the course provides students with eligibility for employment as Education Assistants or can be used as an alternative entry pathway into to a wide range of undergraduate courses, dependent on prerequisites, minimum entry requirements and available places.

For further course information, visit
reachyourpotential.com.au/courses/C27

MINIMUM ENTRY REQUIREMENTS FOR OUR UPCs

School leavers: to be considered for admission to our UPCs, school leavers must meet the requirements of the Western Australian Certificate of Education (WACE), ECU's English Competency requirements, and either:

- Have studied a minimum of four ECU approved subjects/courses in year 12 (at least 2 WACE courses must be undertaken at Stage 2 or above), or
- Successfully completed a Certificate IV in year 12

Mature age: to be considered for admission to our UPCs, mature age applicants must have either:

- Achieved year 12 results from a previous year,
- Have a minimum score of 110 (post Feb 2010) or 125 (prior to Feb 2010) in English and at least 110 (post Feb 2010) or 115 (prior to Feb 2010) in either the STAT Verbal or Quantitative components,
- Have successfully completed a Certificate III or higher from a Registered Training Organisation, or
- Applied via the Portfolio entry pathway

Applicants must meet ECU's UPC English Competency requirements through the Portfolio entry pathway or other means.

INDIGENOUS UNIVERSITY ORIENTATION COURSE (IUOC)

The IUOC Provides a pathway for Indigenous Australian applicants to enter into most undergraduate courses at ECU. It prepares students with the academic skills and understanding required to engage with the knowledge and processes of university degree studies. The course covers preparation of university writing skills, university reading skills and basic computer skills.

For further course information, visit
reachyourpotential.com.au/indigenous

INTERNATIONAL APPLICANTS

You are considered an international student if you are not an Australian or New Zealand Citizen, an Australian Permanent Resident or hold a Humanitarian Visa. If you are studying on an International Student Visa, you must study courses that are CRICOS registered, which means that not all of the ECU courses are available for you to study. It is important that you find out what courses are available to you before applying.

HOW TO GET INTO ECU?

We provide a wide range of entry pathways that prospective international students can use to gain admission into undergraduate courses at ECU. These include:

- Secondary school qualifications
- Foundation programs
- Certificate IV, Diploma and Advanced Diploma qualifications
- Previous tertiary qualifications

ADVANCED STANDING

If you are applying for one of our courses and have completed previous study at an equivalent level, you may be eligible for advanced standing.

PACKAGING YOUR ENTRY PATHWAY

A range of pathway programs can be packaged with a specific ECU course. Successful completion of the pathway course will guarantee you a place in the ECU course packaged in your offer, providing that you meet all the conditions of your offer. Contact the institution offering the ECU pathway packaging option if you are interested or require more information.

MINIMUM ADMISSION REQUIREMENTS

There are minimum academic, as well as English admission requirements, to get into ECU. In addition, some of our courses have special academic and/or higher English requirements. You will need to satisfy all requirements for the course you intend to apply for. If you come from a country where English is not the primary language spoken, you may be required to provide proof of English competency, such as IELTS or TOEFL.

English Centres

If you meet the academic entry requirements for admission, but do not meet the English entry requirements, you may be able to study a course at an English Centre, enabling you to meet the English entry requirements.

APPLYING TO ECU

As an international student you can apply:

- Directly to ECU – select a course and apply using our online application system
- Through an Agent or ECU representative in your home country

Note: In order to have your qualifications assessed for admission, you must submit an application to ECU, which is free of charge.

For more information on entry pathways and admission requirements for international students, visit www.reachyourpotential.com.au/international

MORE INFORMATION

SUPPORT SERVICES

At ECU the health, wellbeing and overall success of our students is our priority. The University provides a wide range of free and confidential services including career advice, confidential counselling services, health services, as well as equity and disability services which support students throughout their studies. For more information, visit www.reachyourpotential.com.au/services

FINANCIAL SUPPORT

ECU recognises people with passion and potential, and while university fees are an investment that will pay dividends once students graduate and enter the workforce, meeting the costs of fees and books whilst studying can be a challenge. To help with this, ECU provides and administers a variety of financial support options, including scholarships and loans, to assist students with their studies. For more information, visit www.reachyourpotential.com.au/assistance

CONTACT US

Contact ECU by phone on **134 ECU (134 328)**

For calls outside Australia phone **(61 8) 6304 0000**

Email us at futurestudy@ecu.edu.au
or visit reachyourpotential.com.au



Become a fan at facebook.com/ecujourney



Follow us at twitter.com/edithcowanuni



Watch us at youtube.com/edithcowanuniversity

This publication is intended for Australian Citizens and Permanent Residents only. Some information contained in this publication may not be applicable to international students.

Every effort has been made to ensure that the information contained in this publication is correct at the time of printing. The information is subject to change from time to time and the University reserves the right to add, vary or discontinue courses and impose limitations on enrolment in any course. The publication constitutes an expression of intent and is not to be taken as a firm offer or understanding.

CRICOS IPC 00279B key2creative_33249_04/12

GREENING ECU: Edith Cowan University is committed to reducing the environmental impact associated with its operations by conducting its activities in a socially and environmentally responsible manner. This includes implementing strategies and technologies that minimise waste of resources and demonstrate environmentally sensitive development, innovation and continuous improvement.



sustainable forest



mill certified



environmental management system



elemental chlorine free



Contact ECU by
phone on **134 ECU (134 328)**

For calls outside Australia
phone **(61 8) 6304 0000**

Email us at futurestudy@ecu.edu.au
or visit reachyourpotential.com.au



Become a fan at
facebook.com/ecujourney



Follow us at
twitter.com/edithcowanuni



Watch us at
youtube.com/edithcowanuniversity

ECU IS  SMOKE-FREE