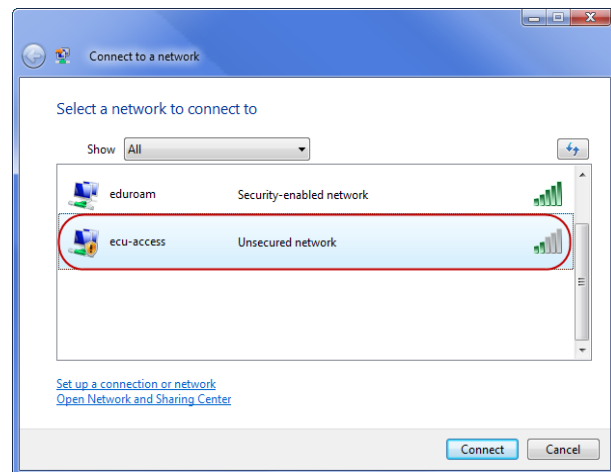
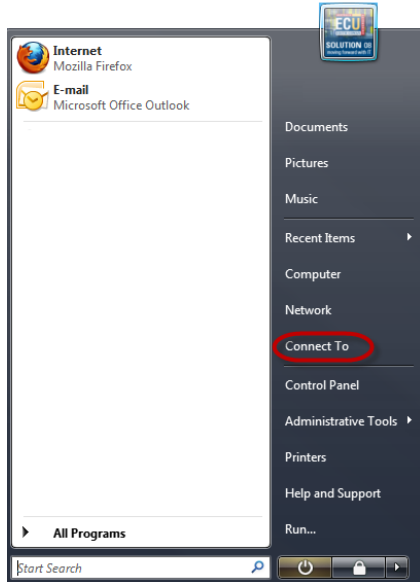
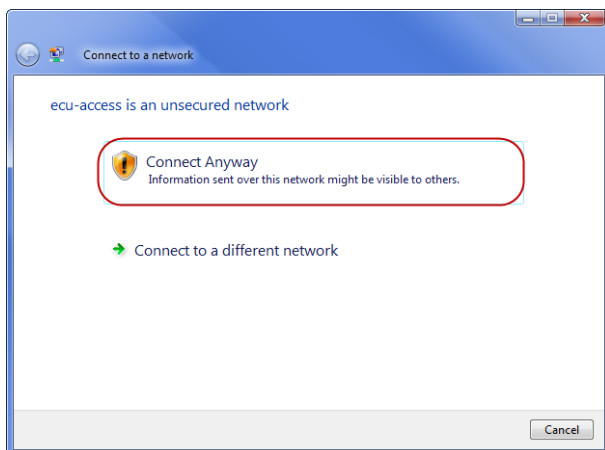


Wireless Instructions for connecting Windows Vista to ecu-access

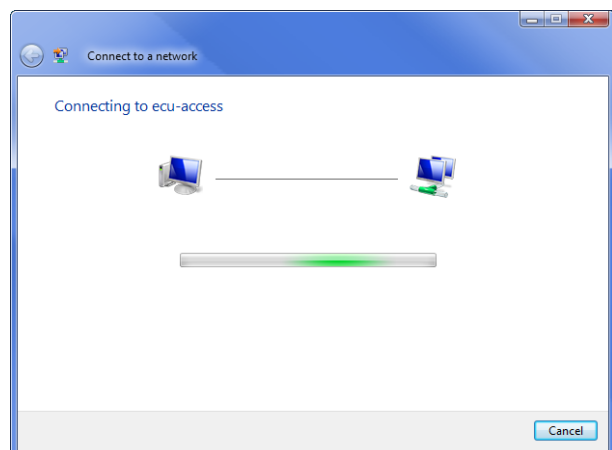
1. → From the start menu, click **Connect To** 2. → Select **ecu-access** and click **Connect**



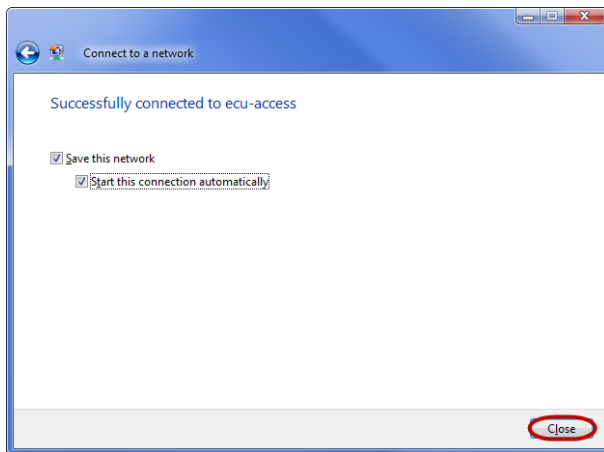
3. → Click '**Connect Anyway**'



4. → You will see the following screen while the wireless connects.



5. → If you would like to connect to the ECU wireless automatically, leave both of the boxes ticked as demonstrated in the picture below.



6. → You will need to establish a connection to the ECU VPN in order to connect to websites outside of the ECU network.
→ Click [here](#) for VPN instructions

Note: If you have established a VPN connection and cannot access websites outside of the ECU domain, you will need to check your proxy settings and confirm they are set to “**Automatically Detect Settings**”.

To configure proxy settings for:

Internet Explorer:

Open **Internet Explorer** and click **Tools > Internet Options > Connections** > double click **ECU VPN**. Tick the box labelled “**Automatically Detect Settings**”. Click OK to all open windows and try browsing a website.

Firefox:

Open **Firefox** and click **Tools > Options > Advanced > Network > Settings** > and tick the box labelled “**Auto-detect proxy settings for this network**”. Click OK to all open windows and try browsing a website.