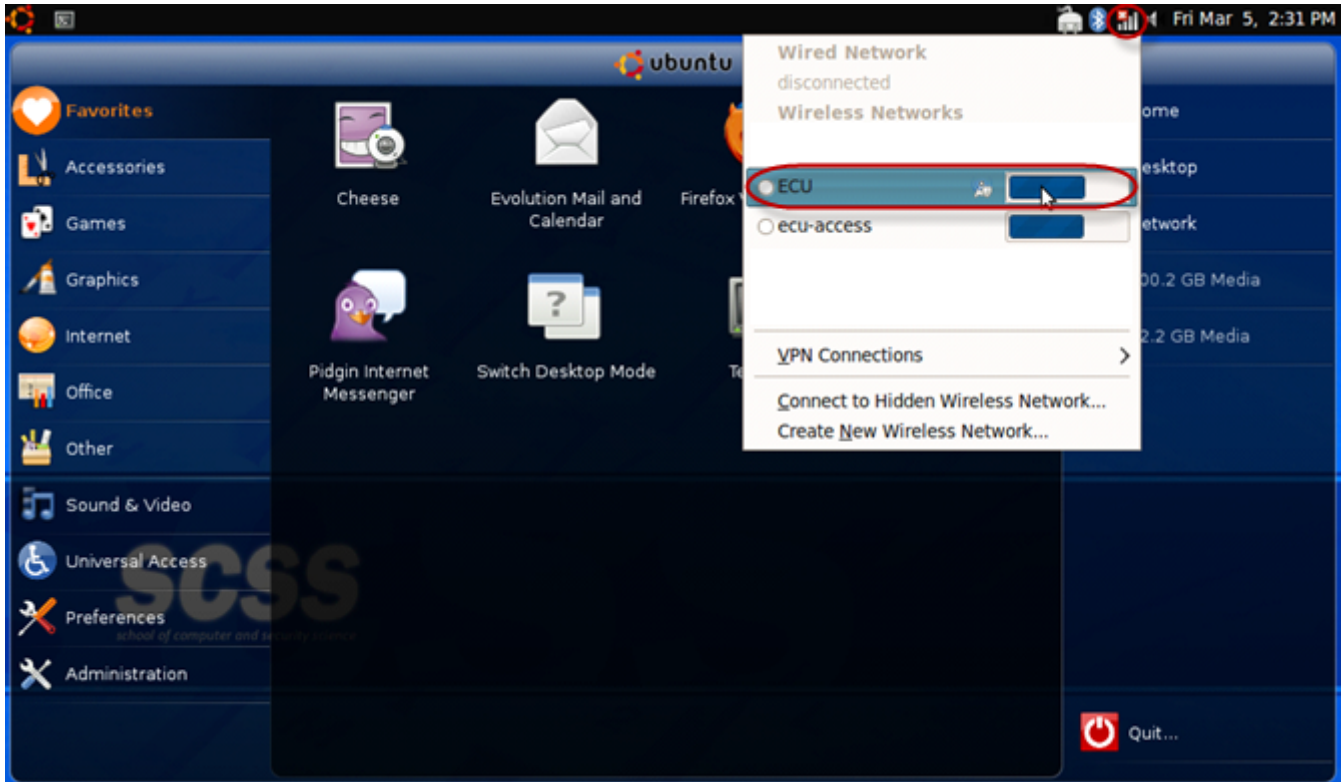


Wireless instructions for Ubuntu 9.04

1. → Click the **wireless icon** in the taskbar and select 'ECU'

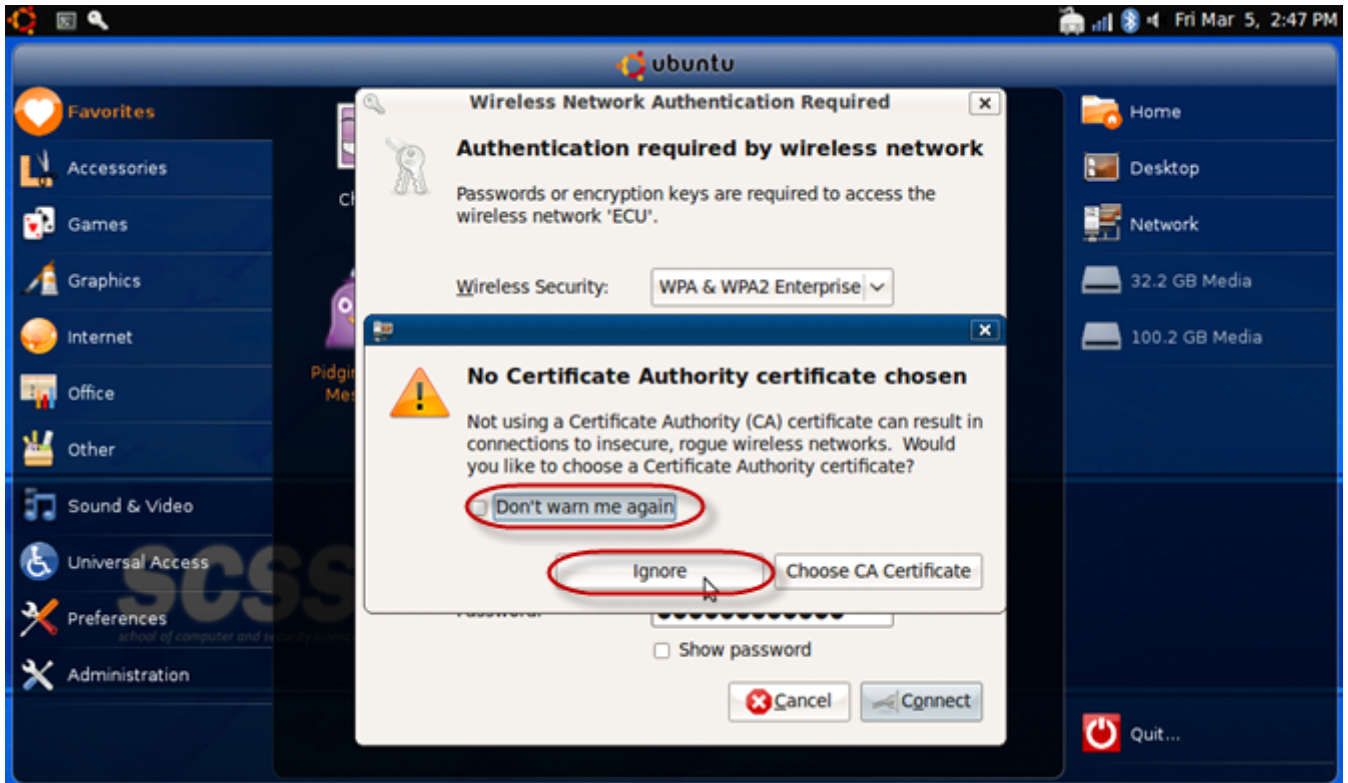


2. → Configure the settings as pictured below:
- **Wireless Security:** WPA & WPA2 Enterprise
 - **Authentication:** Protected EAP (PEAP)
 - **Anonymous Identity:**
 - **CA Certificate:** (None)
 - **PEAP Version:** Automatic
 - **Inner Authentication:** MSCHAPv2
 - **User Name:** ads\username
 - **Password:**

→ Click **Connect**



3. → Click **Don't warn me again** and then click **Ignore**



4. → The **ECU Connection Established** box will appear to indicate you have successfully connected to the wireless.

