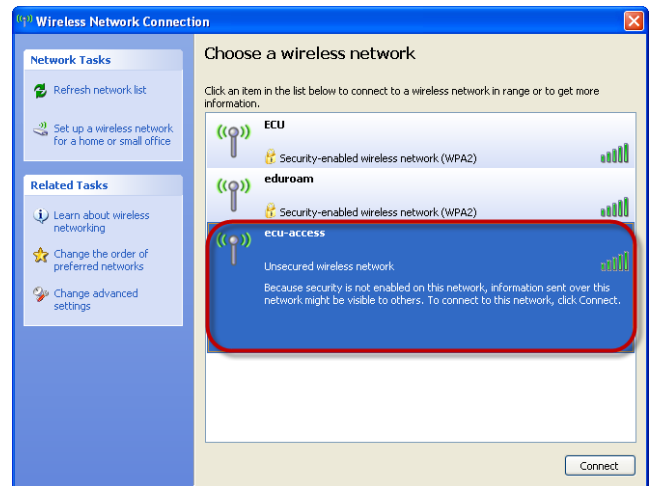
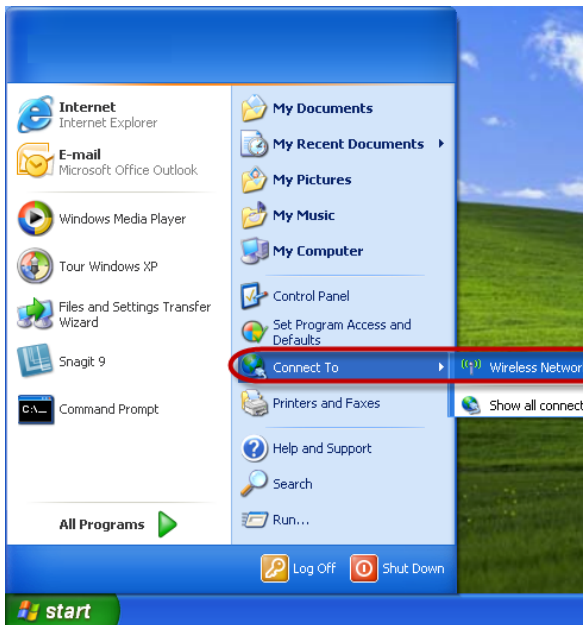


Wireless Instructions for Windows XP

1. → From the start menu, click **Connect To**
2. → Wireless Network Connection
3. → Double click “**ecu-access**”



4. → Click **Connect Anyway**
5. → You will need to connect your VPN connection and configure proxy settings to view websites outside of the ECU domain.
→ Click [here](#) for VPN instructions.



Note: If you have established a VPN connection and cannot access websites outside of the ECU domain, you will need to check your proxy settings and confirm they are set to “**Automatically Detect Settings**”.

To configure proxy settings for:

Internet Explorer:

Open **Internet Explorer** and click **Tools > Internet Options > Connections > double click ECU VPN**. Tick the box labelled “**Automatically Detect Settings**”. Click OK to all open windows and try browsing a website.

Firefox:

Open **Firefox** and click **Tools > Options > Advanced > Network > Settings >** and tick the box labelled “**Auto-detect proxy settings for this network**”. Click OK to all open windows and try browsing a website.