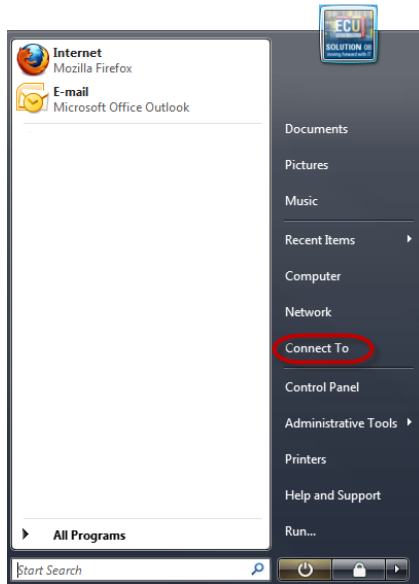
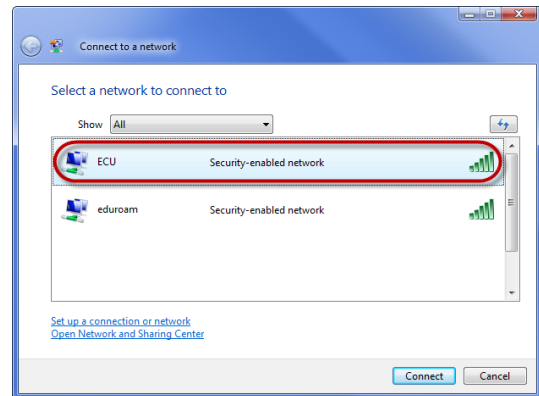


## Wireless Instructions for Windows Vista

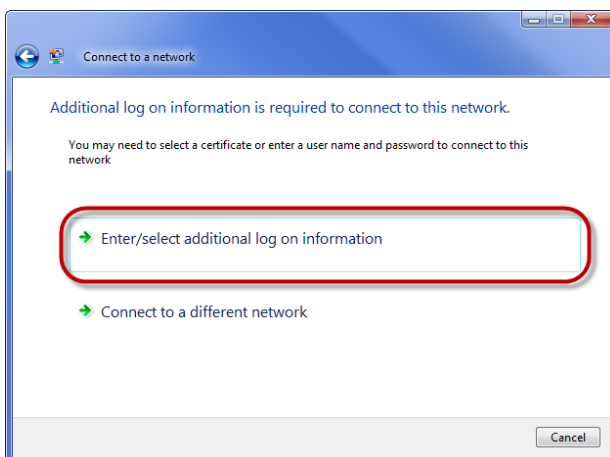
1. → From the start menu, click **Connect To**



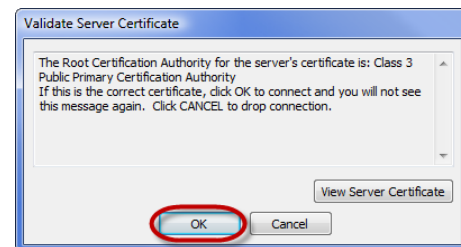
2. → Select **ECU** and click **Connect**



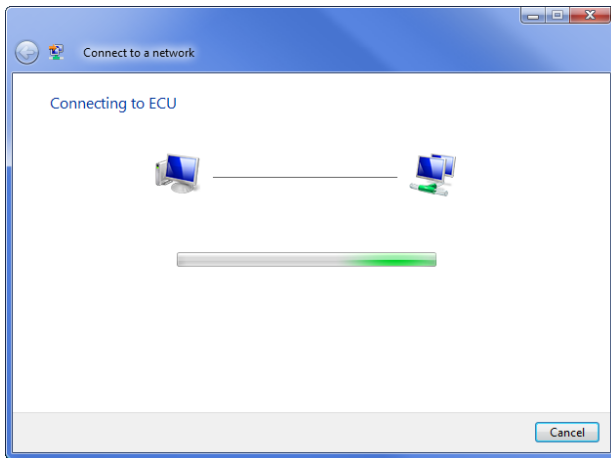
3. → Click 'Enter/select additional log on information'



4. → Click 'OK'



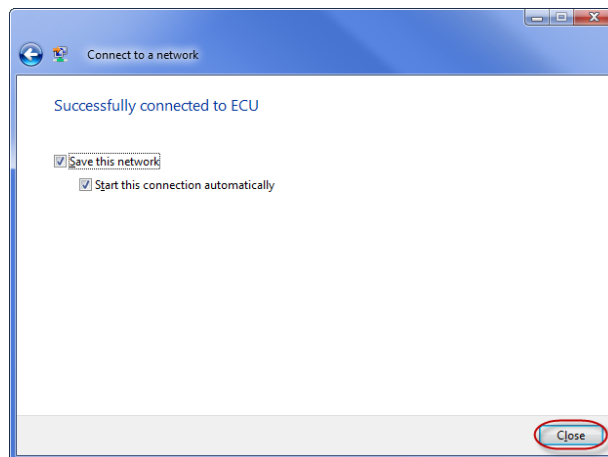
5. → You will see the following screen while the wireless connects.



6. → Enter your ECU username, password & click 'OK'



7. → If you would like to connect to the ECU wireless automatically, leave both of the boxes ticked as demonstrated in the picture below.



**Note:** If you cannot access websites outside of the ECU domain, you will need to check your proxy settings and confirm they are set to "**Automatically Detect Settings**".

To configure proxy settings for;

**Internet Explorer:**

Open **Internet Explorer** and click **Tools > Internet Options > Connections > LAN Settings**. Tick the box labelled "**Automatically Detect Settings**". Click OK to all open windows and try browsing a website.

**Firefox:**

Open **Firefox** and click **Tools > Options > Advanced > Network > Settings >** and tick the box labelled "**Auto-detect proxy settings for this network**". Click OK to all open windows and try browsing a website.