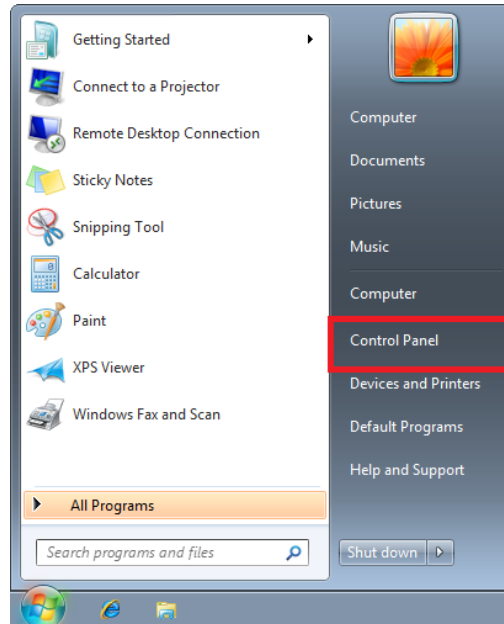
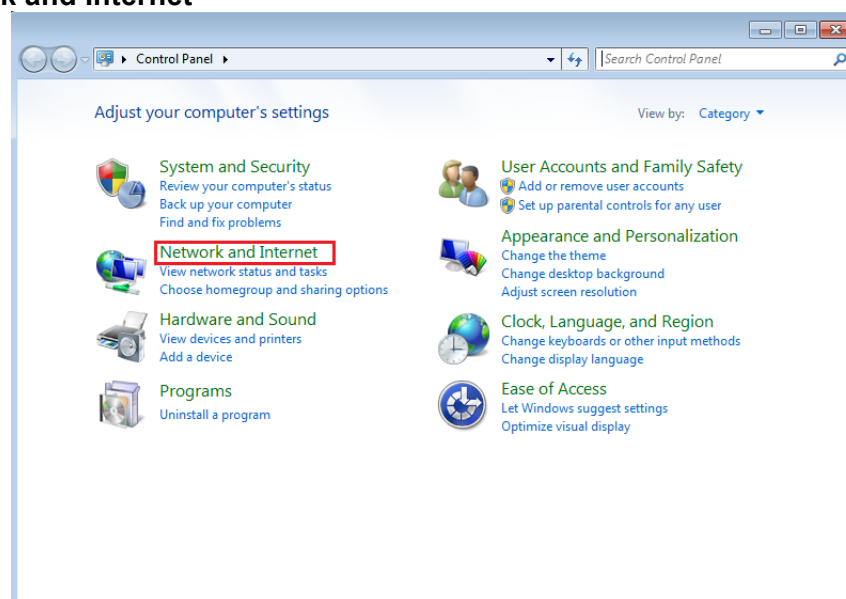


Wireless Instructions for Windows 7

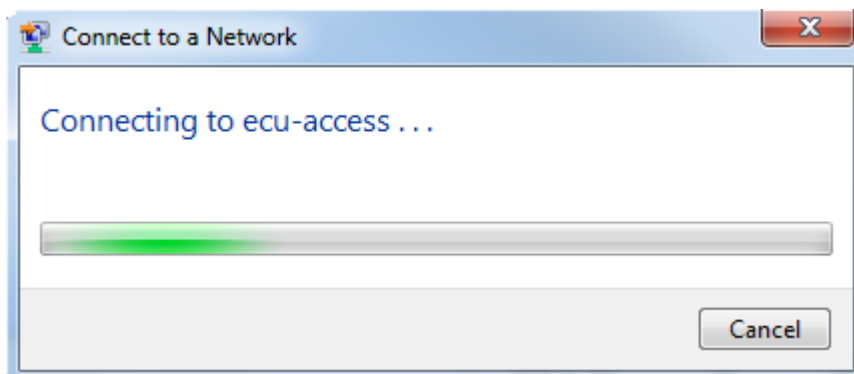
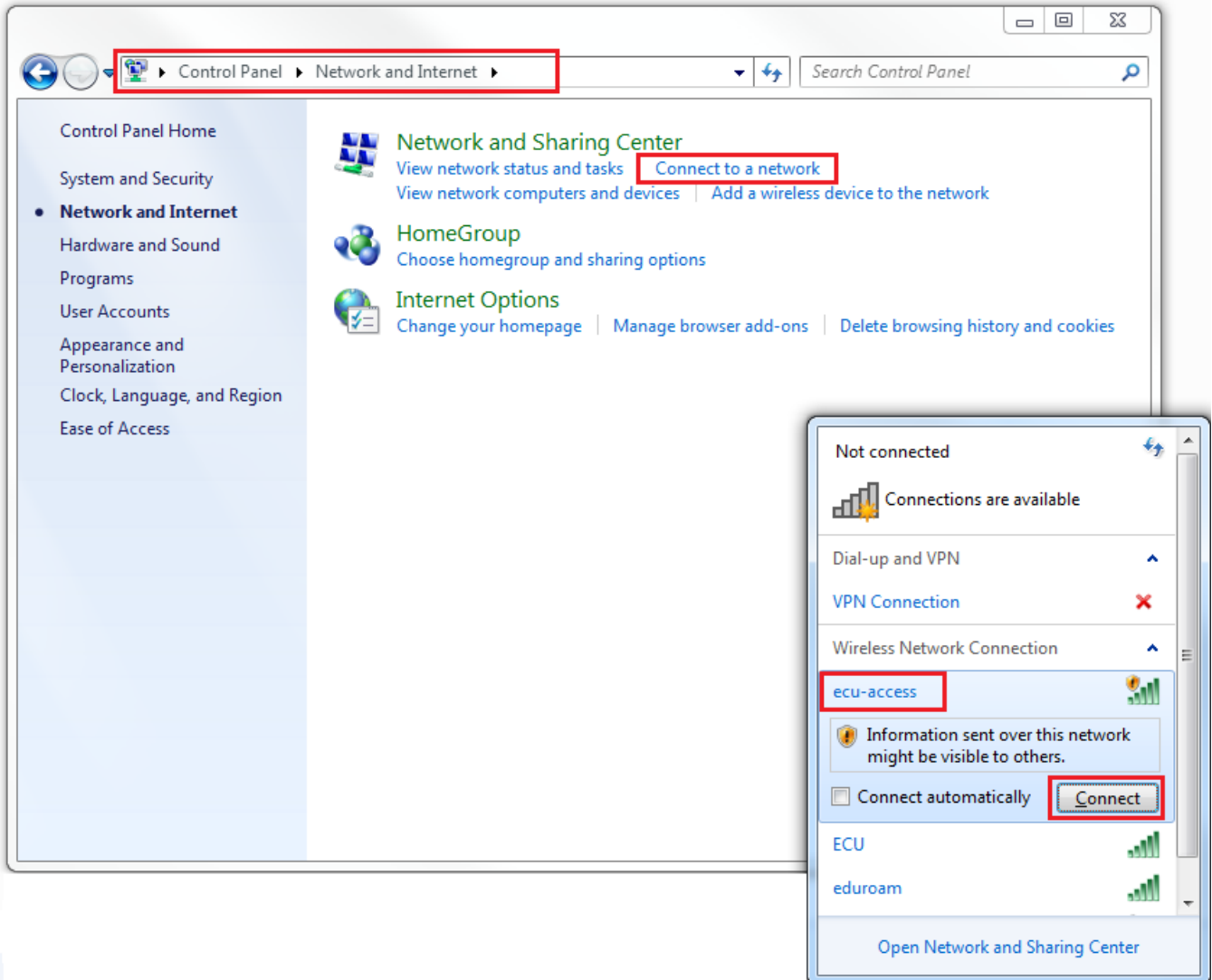
1. Click **Start** → **Control Panel**



2. Open **Network and Internet**



3. → Click **Connect to a Network**
→ Select **ecu-access** and click **Connect**



4. → You will need to establish a connection to the ECU VPN in order to connect to websites outside of the ECU network.
5. → Click [here](#) for VPN instructions

Note: If you have established a VPN connection and cannot access websites outside of the ECU domain, you will need to check your proxy settings and confirm they are set to “**Automatically Detect Settings**”.

To configure proxy settings for:

Internet Explorer:

Open **Internet Explorer** and click **Tools > Internet Options > Connections** > double click **ECU VPN**. Tick the box labelled “**Automatically Detect Settings**”. Click OK to all open windows and try browsing a website.

Firefox:

Open **Firefox** and click **Tools > Options > Advanced > Network > Settings** > and tick the box labelled “**Auto-detect proxy settings for this network**”. Click OK to all open windows and try browsing a website.