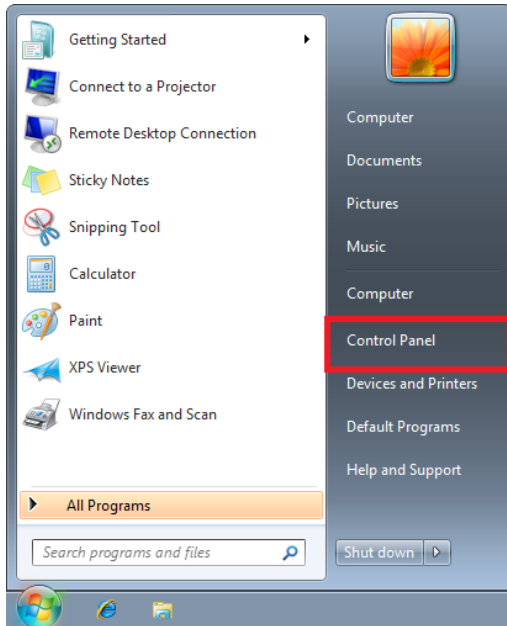
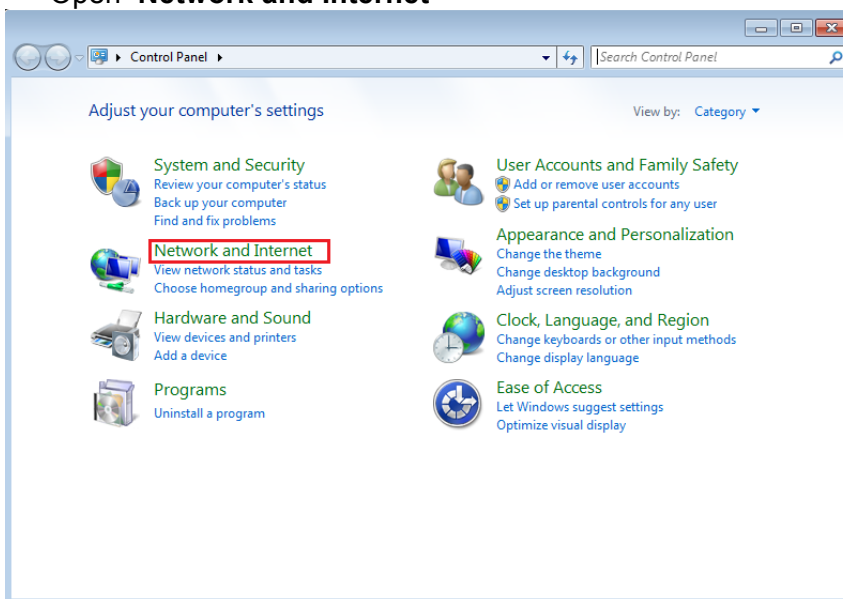


Wireless Instructions for Windows 7

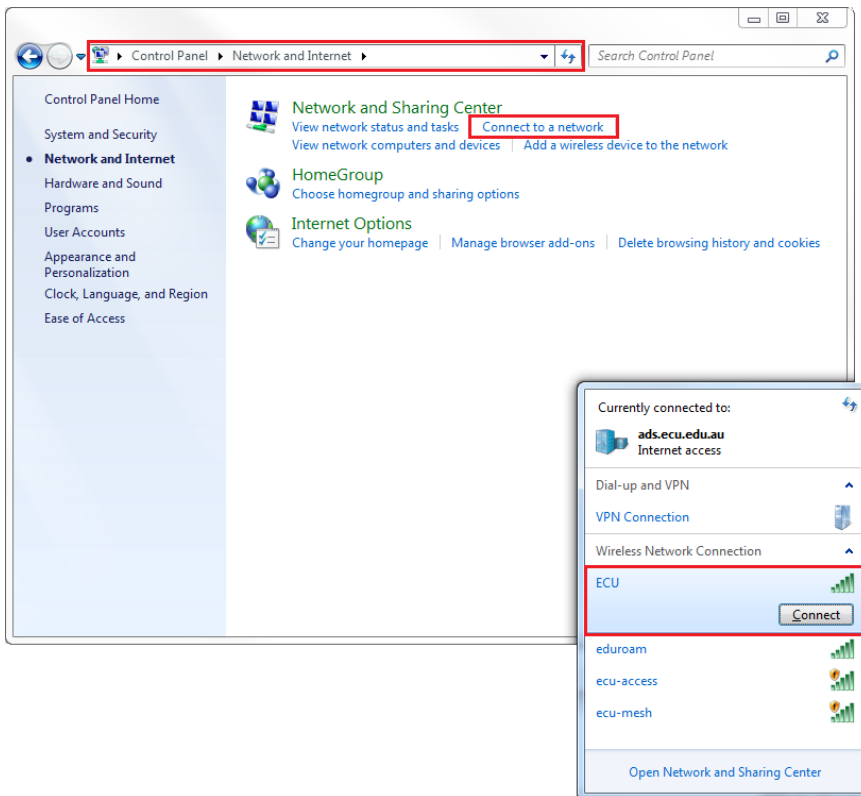
1. Click **Start** → **Control Panel**



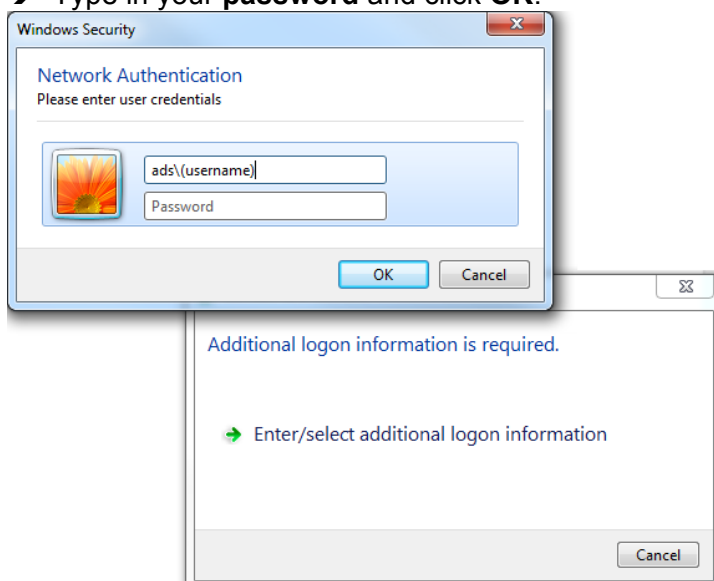
2. Open **Network and Internet**



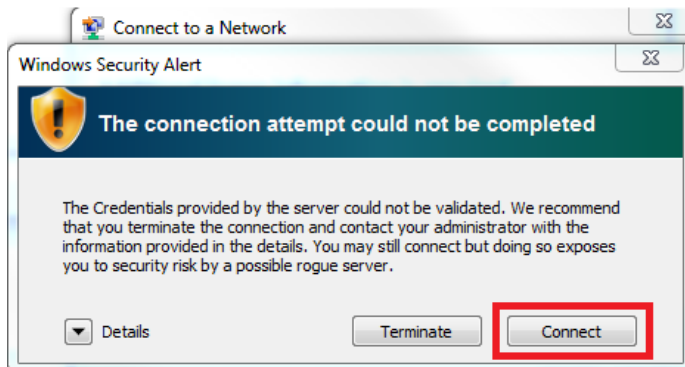
3. → Click **Connect to a Network**
→ Select **ECU** and click **Connect**



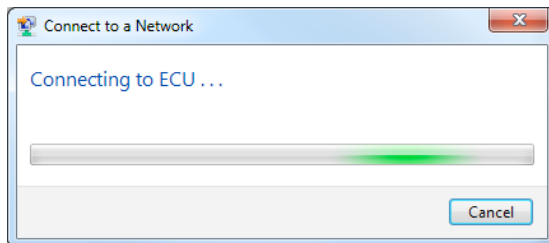
4. → Enter your **username** in the format: ads\username
→ Type in your **password** and click **OK**.



5. → Click **Connect** at the Windows Security Alert pop-up.



6. → The Connecting to ECU box displayed while a connection is established.



7. → An icon similar to the one pictured below will be displayed once you have successfully connected to the wireless.



Note: If you cannot access websites outside of the ECU domain, you will need to check your proxy settings and confirm they are set to “**Automatically Detect Settings**”.

To configure proxy settings for:

Internet Explorer:

Open **Internet Explorer** and click **Tools > Internet Options > Connections > LAN Settings**. Tick the box labelled “**Automatically Detect Settings**”. Click OK to all open windows and try browsing a website. Click here for detailed **IE** instructions.

Firefox:

Open **Firefox** and click **Tools > Options > Advanced > Network > Settings >** and tick the box labelled “**Auto-detect proxy settings for this network**”. Click OK to all open windows and try browsing a website.