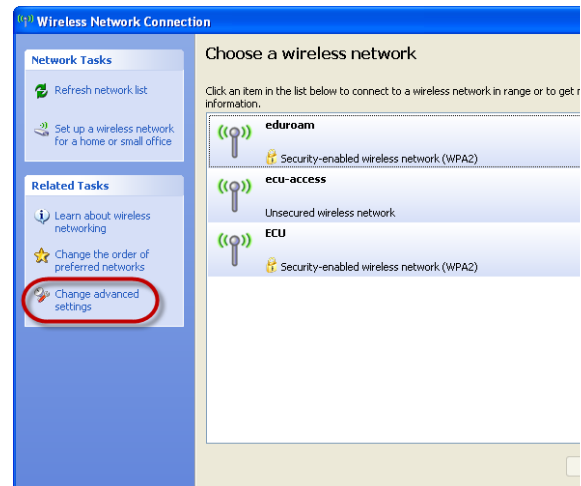
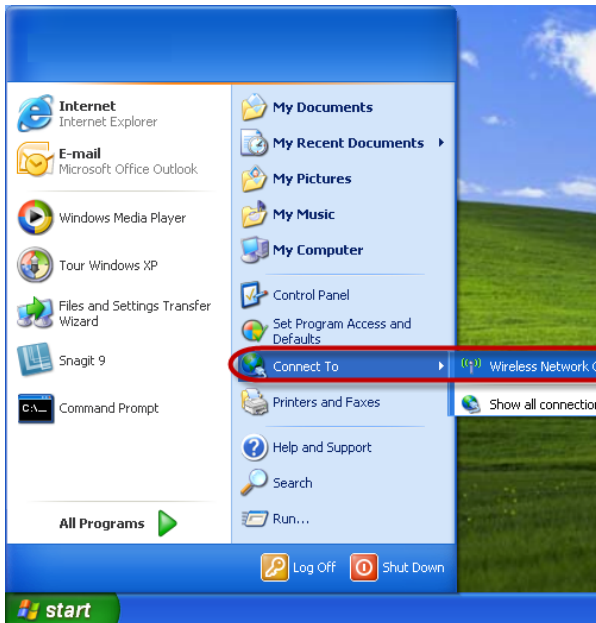


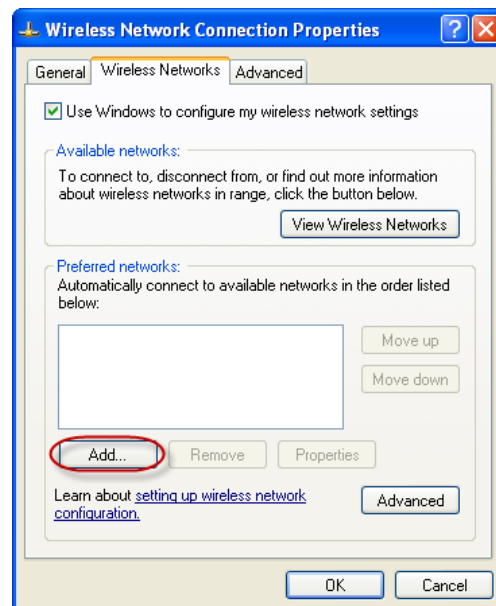
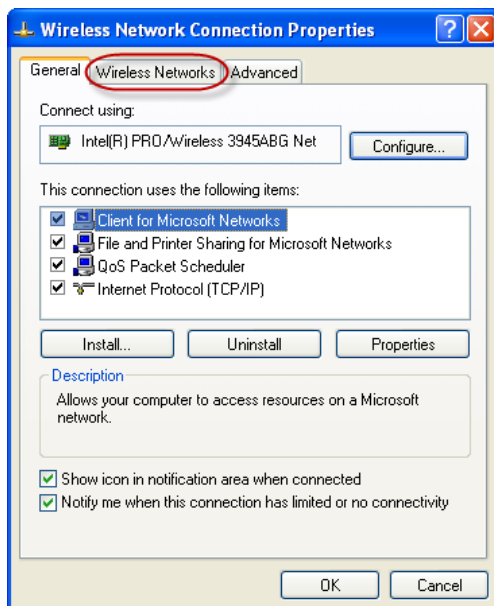
## Wireless Instructions for Windows XP

These instructions are designed for equipment manufactured after 2005. If you experience problems connecting to the “ECU” wireless network, please use the [alternative instructions](#) to connect to the “**ecu-access**” wireless network.

1. → From the start menu, click **Connect To**
2. → **Wireless Network Connection**
3. → Select **Change advanced settings**



4. → Click the **Wireless Networks** tab
5. → Click 'Add'



6. → Type the following information as it appears below:  
**Network Name (SSID):** ECU  
**Network Authentication:** WPA2  
**Data encryption:** AES
7. → Un-tick the box “This is a computer-to-computer (ad hoc) network; wireless access points are not used.”

Wireless network properties

Association Authentication Connection

Network name (SSID): ECU

Wireless network key

This network requires a key for the following:

Network Authentication: WPA2

Data encryption: AES

Network key:

Confirm network key:

Key index (advanced): 1

The key is provided for me automatically

This is a computer-to-computer (ad hoc) network; wireless access points are not used

OK Cancel

8. → Select the **Authentication** tab

Wireless network properties

Association Authentication Connection

Network name (SSID): ECU

Wireless network key

This network requires a key for the following:

Network Authentication: WPA2

Data encryption: AES

Network key:

Confirm network key:

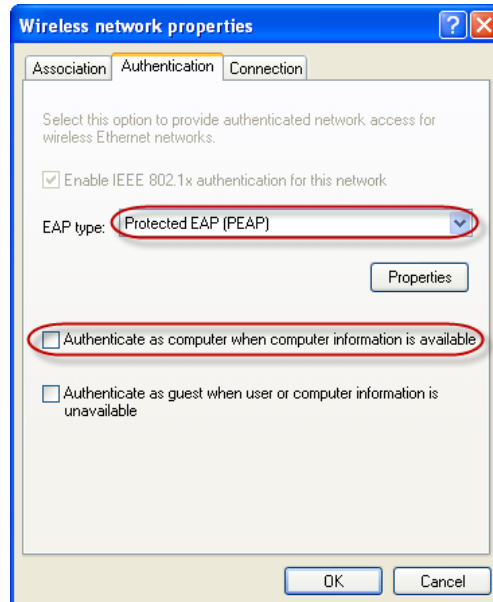
Key index (advanced): 1

The key is provided for me automatically

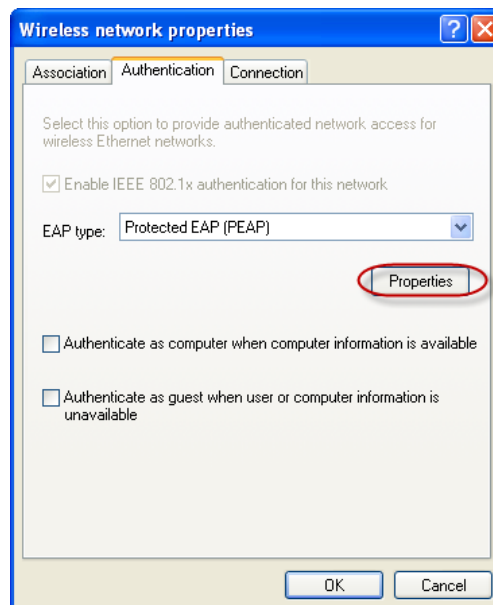
This is a computer-to-computer (ad hoc) network; wireless access points are not used

OK Cancel

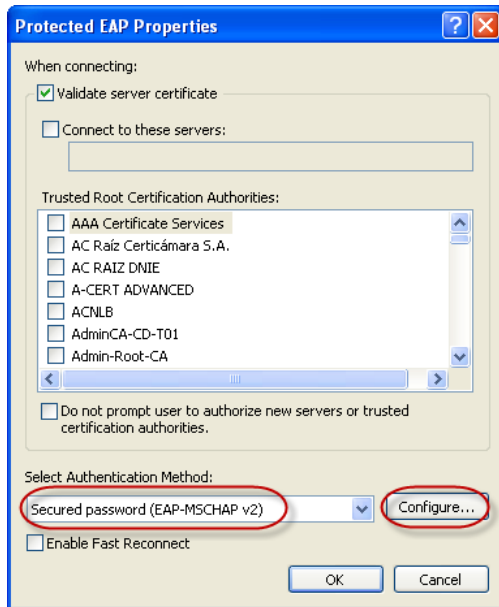
9. → Change **EAP type** to “**Protected EAP (PEAP)**”
10. → Un-tick “**Authenticate as computer when computer information is available**”



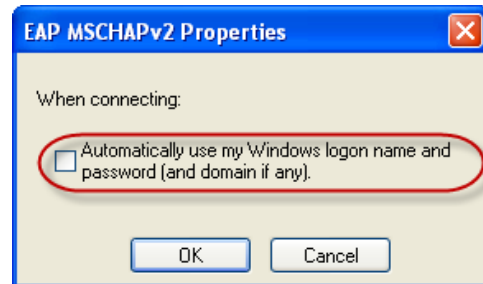
11. → Click **Properties**



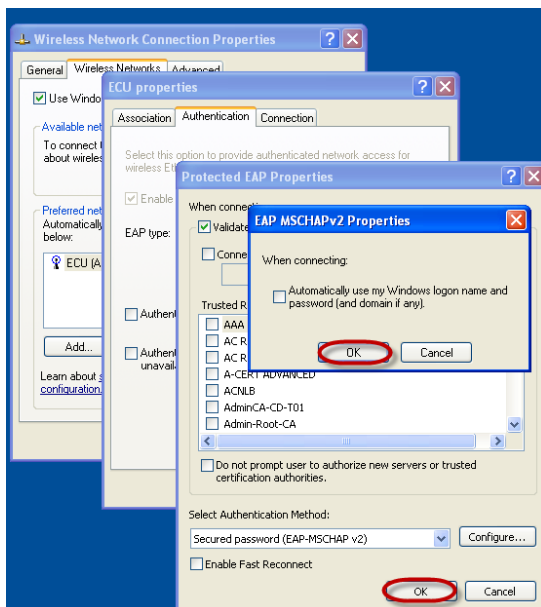
12. → Change **Select Authentication Method** to  
“**Secured password (EAP-MSCHAP v2)**”  
→ Click **Configure**



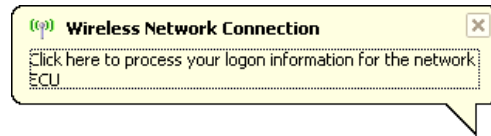
13. → Un-tick “**Automatically use my Windows logon name and password (and domain if any).**”



14. → Click “**OK**” to all remaining windows that are open



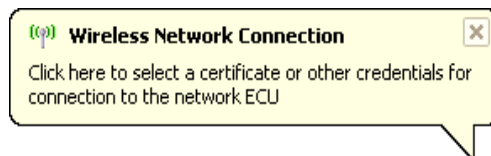
15. → Click the “**Wireless Network Connection**” bubble that appears in the Notification area.



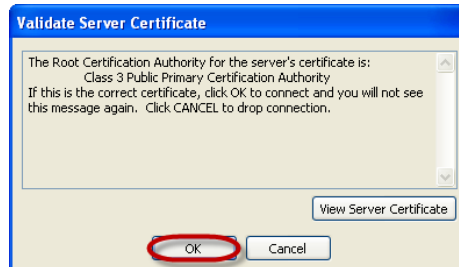
16. → Enter your ECU **User Name** and **Password** into appropriate fields.  
→ Leave Logon Domain Blank.  
→ Click **OK**



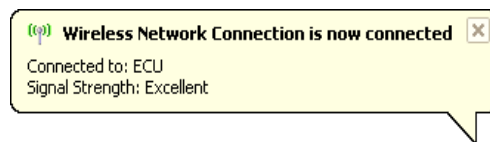
17. → Click the “**Wireless Network Connection**” bubble that appears in the Notification area.



18. → Click “**OK**” to the “**Validate Server Certificate**” pop-up.



19. → You will see the following bubble once you have successfully connected to the wireless network.



**Note:** If you cannot access websites outside of the ECU domain, you will need to check your proxy settings and confirm they are set to “**Automatically Detect Settings**”.

To configure proxy settings for;

**Internet Explorer:**

Open **Internet Explorer** and click **Tools > Internet Options > Connections > LAN Settings**. Tick the box labelled “**Automatically Detect Settings**”. Click OK to all open windows and try browsing a website.

**Firefox:**

Open **Firefox** and click **Tools > Options > Advanced > Network > Settings >** and tick the box labelled “**Auto-detect proxy settings for this network**”. Click OK to all open windows and try browsing a website.