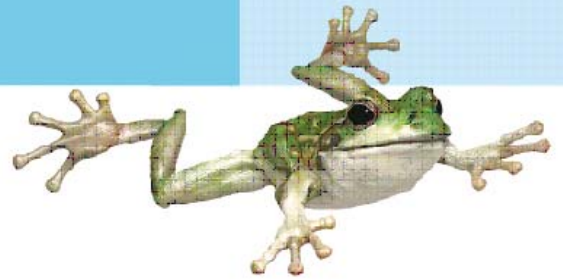


# Winter Sprinkler Ban



## Frequently Asked Questions - Winter sprinkler ban

### Duration

- 1 July 2009 to 31 August 2009

### Is it Permanent?

- No it is a trial announced by the Minister for Water Resources.
- The state has experienced the third driest start to winter on record. Our dams remain low as we come into the second winter month and our water use is close to nine billion litres above the expected usage for the 12 months ending July 1. This may lead to more water being taken from the Gngangara mound.
- The intent of the trial is to change community perceptions and behaviour about water consumption and emphasise that there is no need to have sprinklers on established lawns and gardens in winter.
- The trial will be assessed closely and provide information to establish if a winter sprinkler ban should be a permanent feature in winter.

### Who does it apply to?

- All **scheme** water users currently under the 2 day per week roster system. List of affected towns provided.
- All domestic **bore** water users in Perth and Mandurah.
- Licensed **bore** users such as golf courses, **local government**, Education Department, Main Roads, Sport and Recreation.

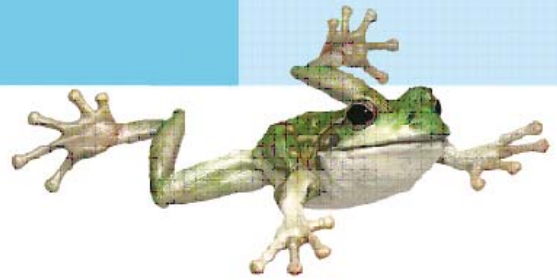
### Who is exempt?

- Garden industries and food production based industries.

### What water uses are permitted?

Stage 6 water restrictions under the Water Agencies (Water Use) By-Laws 2007 apply to **scheme** water use:

- (1) A person must not water a lawn or garden except by —
  - (a) a hand held hose with one outlet; or
  - (b) a hand held watering can.



- (2) A person must not spray a building, path, paved area or road except —
- (a) to the minimum extent necessary for fire fighting; or
  - (b) with —
    - (i) a high pressure water cleaner; or
    - (ii) a hand held hose with one outlet, to the minimum extent necessary for the cleaning of the building, path, paved area or road so as to avoid a threat to public health or safety; or
  - (c) with a hand held hose with one outlet to the minimum extent necessary for purposes related to the construction, demolition or repair of the building, path, paved area or road.
- (3) A person must not fill a swimming pool except —
- (a) to replace water lost from the pool through evaporation or ordinary use; and
  - (b) to the minimum extent necessary for the proper functioning of the pool.

## Enforcement

- Notification of breaches by telephone to 13 10 39.
- Enforcement officer sent out.
- **Scheme** water infringement notices face a \$100 fine.
- **Bore water** infringement sent a letter on behalf of Department of Water requesting cooperation with the trial. If watering occurs on days other than rostered bore water days, an infringement notice will be sent.

## What bore water exemptions apply?

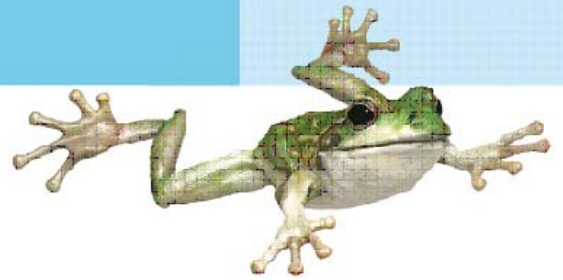
Requests for bore water exemptions shall be in writing to the Department of Water and will be assessed on an individual basis.

## Operating bore so it doesn't seize up

Bore water users are asked to cooperate with the trial and run bore only if necessary for a few minutes on a rostered bore watering day.

## What scheme water exemptions apply?

Scheme water exemptions generally apply to the establishment of new lawns and gardens. The householder must call the Water Corporation on 13 10 39 and request an exemption, the customer service representative will ask the householder if their irrigation system complies with the conditions listed at:



[http://www.watercorporation.com.au/R/restriction\\_exemptions.cfm?uid=5333-1388-1244-2576](http://www.watercorporation.com.au/R/restriction_exemptions.cfm?uid=5333-1388-1244-2576)

If it does, an exemption will be issued.