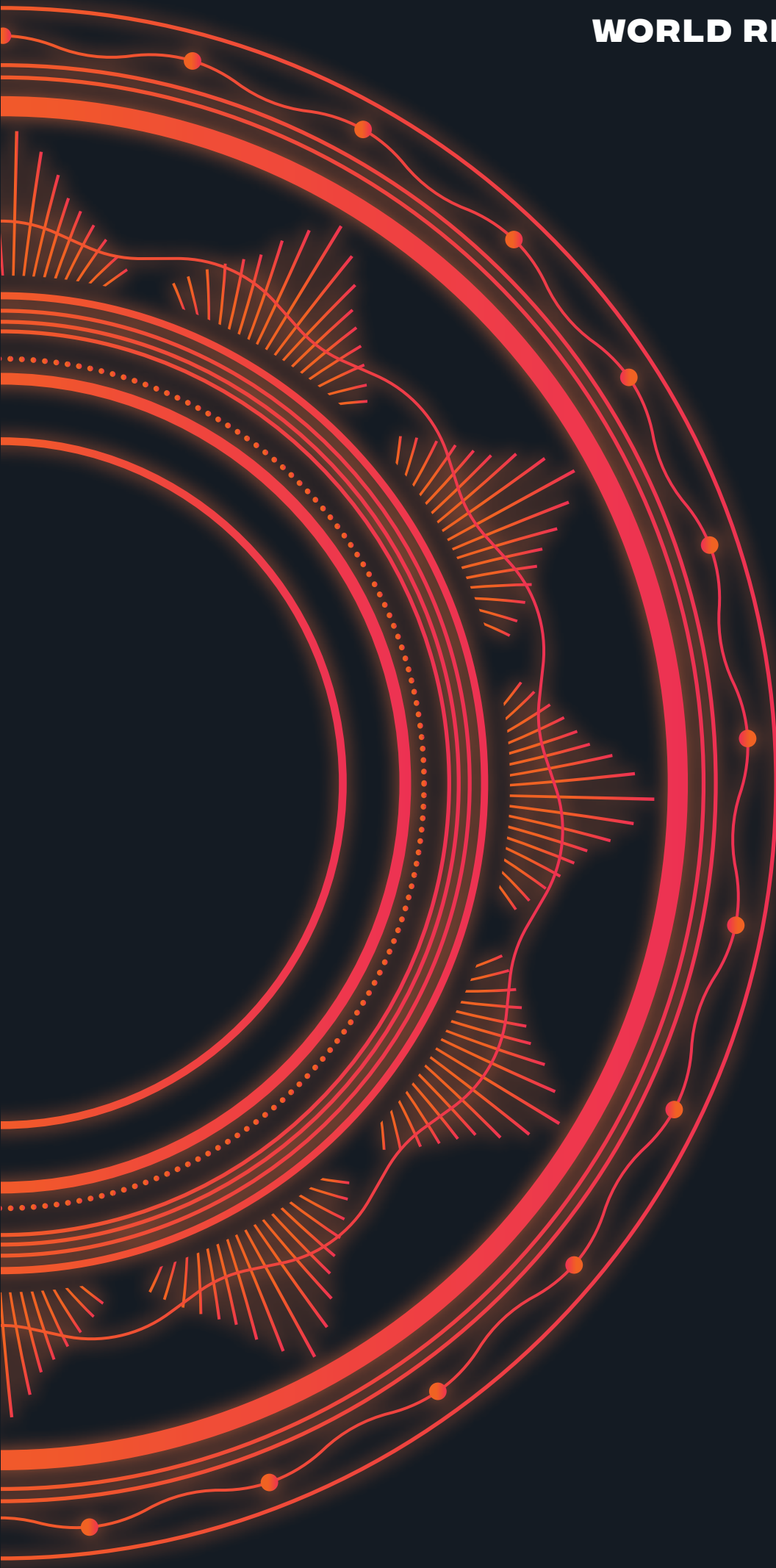


WORLD READY



# 2023 DIRECTIONS

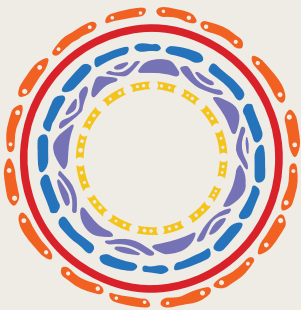
POSTGRADUATE COURSE GUIDE

2023



## CONTENTS

Vice-Chancellor's Message	3	Applications & Admissions	9
Who Was Edith Cowan?	3	Postgraduate Degree Awards	10
Why ECU?	4	Postgraduate Course List	12
Facilities, Services & Support	5	Fees & Financial Assistance	22
Our Campuses	6	Scholarships & Awards	23
Postgraduate Pathways	8		



ECU is committed to reconciliation and recognises and respects the significance of Aboriginal and Torres Strait Islander peoples' communities, cultures and histories. ECU acknowledges and respects the Noongar people as the traditional custodians of the land on which our campuses are located.

[www.ecu.edu.au/about-ecu/indigenous-matters](http://www.ecu.edu.au/about-ecu/indigenous-matters)



Ranked in the world's  
**TOP 100 UNIVERSITIES**  
under 50 years old.



ECU received the maximum rating of 5 stars in the 2022 *Good Universities Guide*.

## VICE-CHANCELLOR'S MESSAGE

**At ECU, we understand that choosing or changing your career is an important decision.**

Whatever your background, you can be assured that we'll do everything we can to help you choose a pathway or course of study to prepare you for the future with a world ready education.

When you choose ECU for further study you can be assured of a consistently high quality of teaching, student support and a great overall student experience.

In fact, we rated 5 stars, and top public university in Western Australia, for postgraduate overall education experience in the latest *Good Universities Guide*.

As you'll see in this prospectus, we teach a diverse range of courses at ECU. These courses are developed in consultation with industry partners, and our teaching staff have extensive industry experience and networks.

These connections also allow us to provide you with work placements while studying, along with fieldwork, practicums, networking events and volunteering opportunities.



Finally, one of the best things I like about ECU is the amazing multicultural mix of students and staff we have here. Should you join us as a student, some of those people will become your new, lifelong friends.

So, if you're looking to make your mark on the world, I hope you'll decide to become world ready at ECU!

A handwritten signature in orange ink, reading "S.K.C.", followed by a horizontal line.

**PROFESSOR STEVE CHAPMAN CBE  
VICE-CHANCELLOR**

## WHO WAS EDITH COWAN?

**BORN IN 1861 IN GLENGARRY, NEAR GERALDTON, EDITH DIRCKSEY COWAN BELIEVED EDUCATION WAS THE KEY TO GROWTH, CHANGE AND IMPROVEMENT.**

**EDITH'S CONTRIBUTION TO THE DEVELOPMENT OF WESTERN AUSTRALIAN EDUCATION WAS SIGNIFICANT.**

**SHE STROVE TO ACHIEVE SOCIAL JUSTICE AND CAMPAIGNED FOR THE RIGHTS OF WOMEN, CHILDREN AND FAMILIES, FOR THE POOR, THE POORLY-EDUCATED AND THE ELDERLY.**

**SO IT'S FITTING THAT THE STATE'S OLDEST EDUCATION INSTITUTION AND NEWEST PUBLIC UNIVERSITY, EDITH COWAN UNIVERSITY, BEARS HER NAME.**

**WORLD READY** \_\_\_\_\_





# WHY ECU?

**WE EQUIP YOU WITH THE CONFIDENCE AND PRACTICAL SKILLS TO DEAL WITH WHATEVER CHALLENGES MAY COME YOUR WAY, NO MATTER WHERE YOU ARE IN THE WORLD. BUT IF THAT ISN'T ENOUGH, HERE ARE A FEW MORE REASONS WHY YOU SHOULD CHOOSE ECU.**



## **LEARN FROM THE BEST**

Our high-calibre staff have extensive experience as researchers, teachers, advisers or consultants and have significant professional experience in their field.



## **AWARD-WINNING FACILITIES**

We are known for our award-winning facilities and are at the forefront of providing innovative education and training solutions.



## **INDUSTRY LINKS**

Many of our courses offer direct links with industry and organisations.



## **INTERNATIONAL OPPORTUNITIES**

You can travel the world while you study by taking advantage of our many exchange partners.



## **SUPPORTIVE LEARNING ENVIRONMENT**

We offer a supportive study environment with approachable teaching staff and a range of support staff, including counsellors and academic skills advisers, to help you get the most out of your education.



## **5-STAR RATINGS**

ECU has been rated 5 stars for postgraduate overall experience, skills development, learning resources, student support and teaching quality in the 2022 *Good Universities Guide*.



## **MORE FLEXIBILITY**

Through a variety of admission pathways and study options, we enable people from all backgrounds to enrich their lives and their communities through education.



## **PRACTICAL LEARNING**

We offer learning that extends beyond the classroom via practicums, work integrated learning, and internships.

# FACILITIES, SERVICES & SUPPORT

## RESOURCES

- Fully-equipped modern libraries
- e-labs available 24/7
- Free Wi-Fi
- Hairdresser **JO**
- ATMs



## STUDENT HUB

- Course information & advice
- Enrolment assistance
- Advice on how to resume a course following deferral/discontinuation
- Advice on extension of time
- Graduation eligibility

## HEALTH

- Medical Centres **JO ML**
- Free Counselling service
- Fully-equipped sports, recreation & fitness centres **JO ML**
- Mini-gym & playing courts **SW**

## FOOD

- Cafés and other food outlets



## LEARNING

- Academic Mentoring
- Learning Advisers
- Career, Volunteering, Mentoring & Leadership Services
- Equity, Diversity & Disability Services
- Study Abroad & Exchange Program
- Kurongkurl Katitjin (Centre for Indigenous Australian Education & Research)
- LGBTQIA+ supportive environment



## SOCIAL

- Student Guild
- Clubs and societies
- University games
- Taverns **JO ML**

## SAFETY

- 24/7 security service
- Well-lit pathways
- Emergency phones
- Night security escort
- 3,271 parking bays across campuses
- Security app

## FAMILY

- Childcare
- Parenting rooms
- Crèche
- Kids Holiday Program **JO ML**



## EQUITY, DIVERSITY & DISABILITY

ECU's Equity, Diversity and Disability Service (EDDS) supports students whose studies may be affected by a range of circumstances including a medical condition or disability, either their own or that of a family member that they care for, cultural or religious practices and other situations on a case by case basis.

EDDS staff will work with you to identify reasonable adjustments and provide ongoing support through an individual Learning and Assessment Plan (LAP). You can make an appointment to have an obligation-free, confidential chat with an EDDS Officer by contacting the service at [studentequity@edu.edu.au](mailto:studentequity@edu.edu.au)



# OUR CAMPUSES

**ECU HAS THREE CAMPUSES IN WESTERN AUSTRALIA, EACH OFFERING A MODERN, VIBRANT LOCATION FOR STUDY AND LEARNING. OUR CAMPUSES FEATURE MODERN FACILITIES, INCLUDING WIRELESS INTERNET, 24-HOUR ACCESS TO COMPUTER LABS, LIBRARIES WITH OPEN STUDY SPACES AND A SAFE ENVIRONMENT FOR YOU TO STUDY IN, EITHER ALONE OR WITH OTHER STUDENTS.**



## **JOONDALUP**

Our Joondalup Campus is located 25km north of Perth and is a short walk or bus ride from the Joondalup Train Station and Lakeside Joondalup, one of the largest shopping centres in Western Australia.

Set within beautiful surrounds, including a lake and an outdoor cinema, Joondalup's spacious parkland provides a great place for students to study and relax. The campus features award-winning architecture, from the grandness of the Chancellery Building with its elaborate spires, to our vibrant golden Ngoolark building and state-of-the-art buildings for Engineering, Science and Health and Wellness.



## **MOUNT LAWLEY**

Located in the thriving cultural hub of Mount Lawley and close to Perth CBD, you can't help but be inspired by the artistic vibe at our Mount Lawley Campus. The campus is home to one of the world's leading performing arts academies, the Western Australian Academy of Performing Arts. The campus is also home to Kurongkurl Katitjin, ECU's Centre for Indigenous Australian Education Research, an invaluable teaching and support resource for our Aboriginal and Torres Strait Islander students.



## **ECU SOUTH WEST**

Located two hours' drive south of Perth, ECU South West in Bunbury is the largest university campus in regional Western Australia, offering small, personalised class sizes and on-campus accommodation. The campus features a café, mini-gym, new crèche facilities, multi-purpose sports courts, nursing demonstration wards, science laboratories and a library with 24-hour access to a computer lab.

## **TRANSPORT**

All of our campuses can be accessed conveniently via public transport. Our Joondalup Campus is located a short distance from the Joondalup Train Station, making it easy to catch public transport to ECU. Buses run frequently between ECU Mount Lawley and Perth CBD, and there are direct bus services to many bus stations in the surrounding suburbs. A number of bus routes travel past ECU South West Campus, and a few end at the Bunbury Health Campus, a short walk away.

## **ACCOMMODATION**

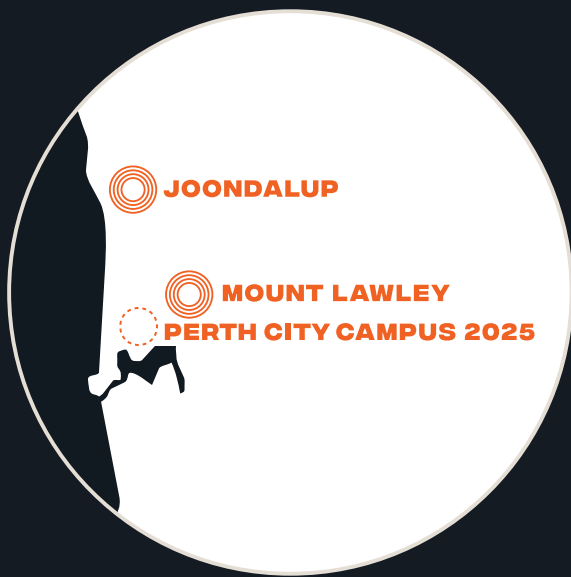
We have excellent student accommodation at all three of our campuses, including facilities like student lounges with Wi-Fi, barbeques, and a swimming pool. ECU Village staff can also help you find off-campus housing.

For more information and to apply, visit [www.ecuvillage.com.au](http://www.ecuvillage.com.au)

## **ONLINE STUDY**

If you'd like to study at university but can't attend classes for reasons such as distance, family or work commitments, then online study may be for you. Many of our courses and units are offered online, and our excellent support services are also available to online students.

For more information about online study, visit [www.ecuworldready.com.au/online](http://www.ecuworldready.com.au/online)



## ECU CITY

**ECU CITY WILL REPRESENT THE FUTURE OF UNIVERSITY EDUCATION – URBAN, CONNECTED, INTEGRATED WITH BUSINESS AND COMMUNITY – AND PART OF THE LIFEBLOOD OF A THRIVING CITY.**

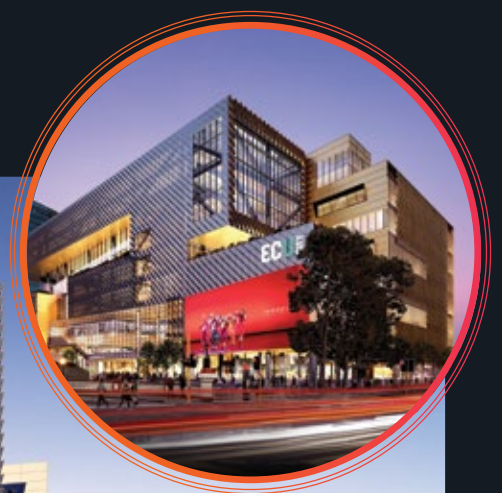
**THIS EXCITING DEVELOPMENT WILL TRANSFORM THE CITY OF PERTH AND WILL DELIVER A WORLD-CLASS CREATIVE INDUSTRIES, BUSINESS AND TECHNOLOGY PRECINCT.**

**Once complete in late 2025, ECU City will be home to:**

- The internationally recognised Western Australian Academy of Performing Arts (WAAPA), with its world-leading courses in Dance, Aboriginal Performance, Musical Theatre, Acting, Music, and Production and Design.
- Creative industries programs from our School of Arts & Humanities, such as Broadcasting and Digital Journalism, Visual Arts, Design and Communications, as well as the WA Screen Academy programs in cinematography, film directing, documentary-making, production, and screenwriting.

- Courses delivered by our School of Business & Law, connecting thousands of world-ready graduates with WA's commercial and legal hub.
- ECU's advanced technology education programs, with next generation content, and world-class facilities.

To follow future developments, please visit [www.citycampus.ecu.edu.au](http://www.citycampus.ecu.edu.au)



# POSTGRADUATE PATHWAYS

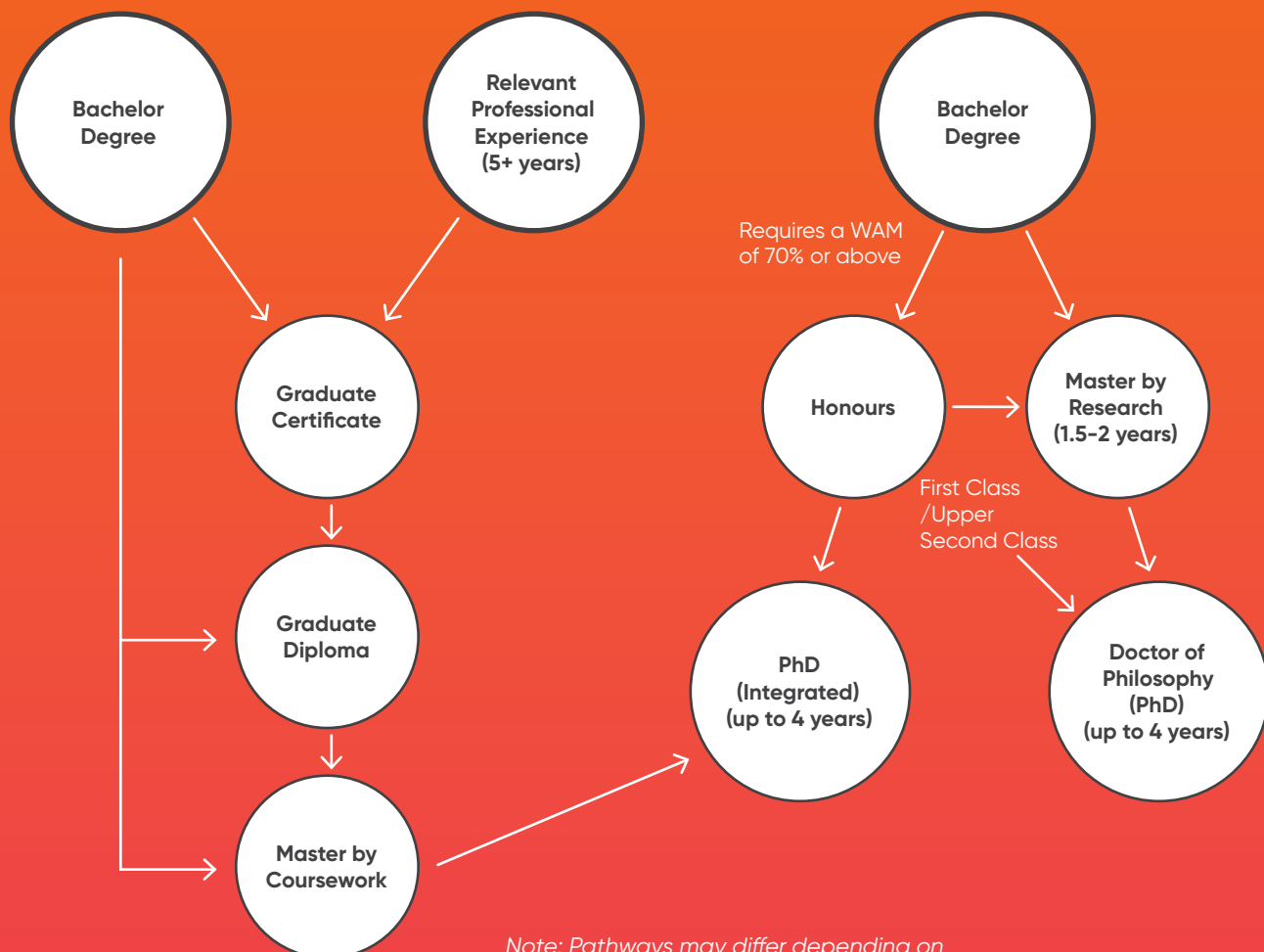
**THERE ARE SEVERAL PATHWAYS TO POSTGRADUATE STUDY AT ECU AND YOU'LL BE GLAD TO KNOW THAT YOU DON'T NECESSARILY NEED A DEGREE TO QUALIFY. REAL-LIFE INDUSTRY EXPERIENCE MAY COUNT.**

## COURSEWORK PATHWAYS

The majority of our postgraduate coursework disciplines offer Graduate Certificate, Graduate Diploma and Masters level courses.

## RESEARCH PATHWAYS

A research degree involves the production of a written body of work that makes an original contribution to knowledge, normally known as a thesis. The research will be developed over a period of time and will involve identifying a topic, developing a proposal, conducting the research and producing the thesis.



*Note: Pathways may differ depending on specific disciplines or research topics.*

**FOR MORE INFORMATION, VISIT  
[ECUWORLDREADY.COM.AU/POSTGRADUATE](http://ECUWORLDREADY.COM.AU/POSTGRADUATE)**



# APPLICATIONS & ADMISSIONS

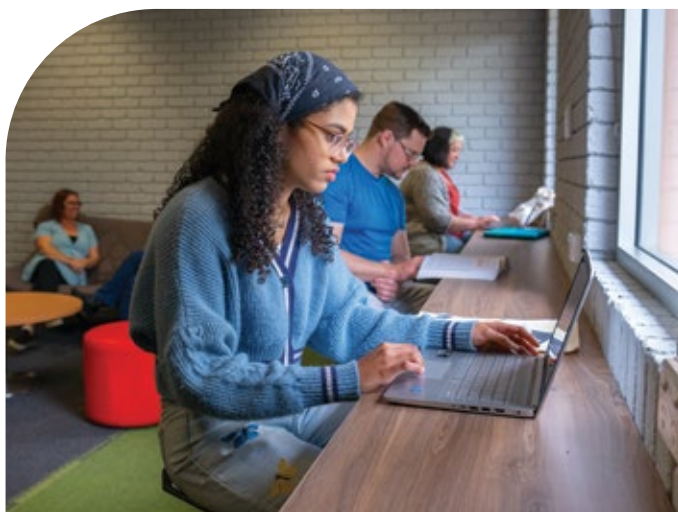
**YOUR APPLICATION PROCESS WILL DIFFER DEPENDING ON THE POSTGRADUATE COURSE YOU ARE APPLYING FOR.**

## HOW TO APPLY

Applications for all courses should be lodged at [ecuworlready.com.au/apply-system](http://ecuworlready.com.au/apply-system)

## WHEN TO APPLY

Commencement dates for Masters by Coursework, Masters by Research, and Doctor of Philosophy (Integrated) are usually late February and late July. To secure your place at ECU, submit your application as soon as possible. Applications for a Doctor of Philosophy are accepted throughout the year.



## ADMISSION REQUIREMENTS

There are minimum admission requirements to enter our postgraduate courses, along with special admission requirements for selected courses. Most postgraduate courses are open to students with a Bachelor Degree, a Bachelor Degree with Honours or equivalent.

Some courses require specific qualifications or subjects to have been completed as part of the admission requirements. Many Graduate Certificate courses are available to people who have at least five years relevant professional experience and without a Bachelor Degree or equivalent. Eligibility is assessed on a case-by-case basis.



**“I’VE BEEN ABLE TO APPLY ALL THE SKILLS AND KNOWLEDGE GAINED FROM MY PHD INTO MY CURRENT ROLE AS A SENIOR PLANNING ENGINEER.”**

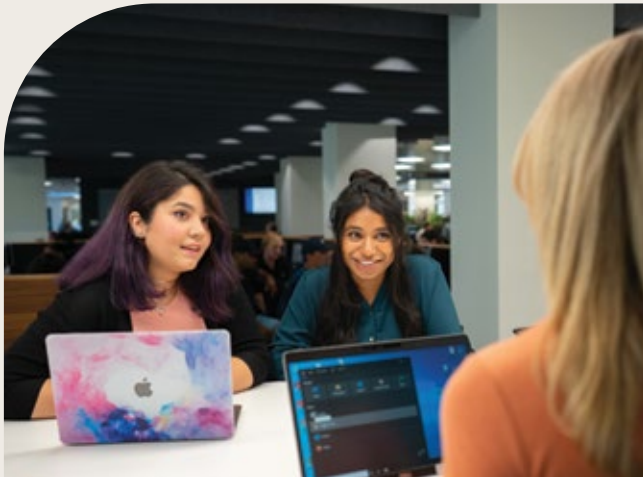
I’ve always had a strong interest in providing solutions to the current problems of the power industry, including the transition to renewable energy and the global energy crisis. I chose to study my PhD at ECU to contribute to my chosen field of Electrical Power Engineering and to develop relevant skills. This has allowed me to combine the knowledge of both academia and industry to propose innovative solutions.

I joined Western Power as a Senior Planning Engineer, where I have opportunities to apply all relevant skills and knowledge gained from my PhD course. I’m taking part in network planning and overall grid transformation of Western Power’s network. ECU has supported me by providing a research-friendly environment, collaboration with industry, and encouragement towards solving global, as well as current industry problems of Australia.

**CHOTON KANTI DAS**  
ECU Engineering PhD graduate

# POSTGRADUATE DEGREE AWARDS

**THERE ARE TWO STREAMS OF POSTGRADUATE PROGRAMS – COURSEWORK OR RESEARCH.**



## COURSEWORK

The majority of our postgraduate coursework disciplines offer Graduate Certificate, Graduate Diploma and Masters level courses.

### GRADUATE CERTIFICATE

A Graduate Certificate is a great way to diversify your current skills and knowledge with courses of only three or four units. The best part is you can complete them in as little as six months of full-time study. Some Graduate Certificates require a completed Bachelor degree, while others are available to people with five years or more experience in the field. A completed Graduate Certificate is a recognised pathway into other postgraduate coursework programs.

### GRADUATE DIPLOMA

Graduate Diplomas comprise eight units in a particular discipline. They are available to who have completed a Bachelor degree in any field and now wish to complete the equivalent of a major in another field, without attempting a second undergraduate degree. Graduate Diplomas generally require one year of full-time study.

### MASTERS BY COURSEWORK

Masters by Coursework degrees provide a body of knowledge that includes the understanding of recent developments in a discipline and/or area of professional practice, and knowledge of research principles and methods applicable to the field of work and/or learning. Course length varies, depending on the level of your previous qualification and if that qualification is in the same discipline as the Masters course.

## COURSEWORK SUPPORT SERVICES

### ORIENTATION

ECU's essential orientation program – called O Week – runs during the week prior to semester start. O Week will help you successfully transition to uni life including activities to help you become familiar with your course teaching staff and the support services available.

### ONLINE SUPPORT

If you'd like to study at university but can't attend classes due to reasons such as distance, family, or work commitments, then online study may be for you. We have a range of courses and units that are offered online, as well as excellent support services available to assist you while you learn.

Visit [ecuworlready.com.au/online](http://ecuworlready.com.au/online) for more information.

### ACADEMIC SKILLS SUPPORT

Learning Advisers can assist you with study skills and offer advice on preparing assignments. They also conduct workshops, prepare academic skill resources, and see students in one-on-one and group consultations.

### CAREER AND EMPLOYABILITY SERVICES

ECU's Careers and Employability team offer services to help students improve their employability.

You can access this service through the online CareerHub where you'll also find industry events, job advertisements, graduate programs, volunteering and mentorship programs to help you through your university journey.

### FAMILY FRIENDLY ECU

Joondalup and Mount Lawley Campuses have professional, fully accredited, and well-equipped childcare centres for children up to five years old. The ECU Sports Centres also have short-term crèches. ECU South West runs a similar crèche facility. A Kids Holiday Program runs during school holidays in Joondalup and Mount Lawley.

## RESEARCH DEGREES

A research degree involves the production of a written body of work that makes an original contribution to knowledge, normally known as a thesis. For those disciplines with a creative component, the study may result in a creative work, such as a performance or literary item, plus an exegesis (critical explanation or interpretation) to accompany the study and reflect on the creative element. Because all ECU research degrees require academic supervision, places are generally limited.

### MASTERS BY RESEARCH

Masters by Research degrees can be two years of full-time study depending on the discipline. Most involve one year of coursework or research skills development units before undertaking a year-long research program which results in the submission of a thesis or creative work.

### DOCTOR OF PHILOSOPHY

Known as a PhD, this study consists of an independent, supervised research project that is assessed on the submission and oral defence of a thesis or creative work and exegesis. The thesis or creative work and exegesis is examined externally and must demonstrate a significant contribution to new knowledge, and an ability to carry out independent research of high quality.

The minimum admission requirement is an Honours degree (First or Upper Second Class) or a Master by Research.

### DOCTOR OF PHILOSOPHY (INTEGRATED)

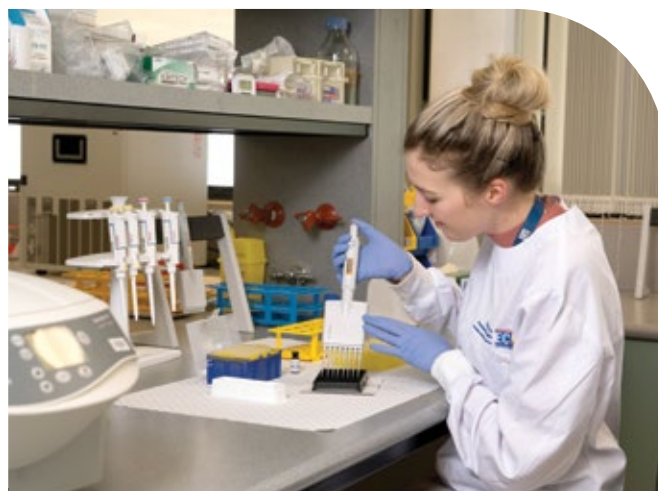
The Doctor of Philosophy (Integrated) is a research degree commencing with a cohort-based foundation year of research preparation, followed by an independent, supervised research project. The subjects covered in the first year support the development of the research project and include generic research training and discipline-specific units. These provide you with strategies for a successful research journey, appropriate research design and methodology, timely completion, and effective writing and communication skills. You must achieve an overall weighted average mark (WAM) of 70% in the first year of research preparation to continue into the thesis component of the course.

The minimum admission requirement is an Honours degree, a Master by Coursework, or the equivalent in a relevant field from a recognised university. This course is not applicable to the School of Education or the School of Engineering.

### SUPERVISORS AND SUBJECTS

The Master by Research, PhD or PhD (integrated) can be undertaken in any School within ECU, provided there are supervisors available in your proposed research area, and that the resources and facilities required to complete your proposed project are accessible. ECU encourages interdisciplinary research that may span multiple research fields or Schools to solve global problems. We encourage you to view the Research Activity pages of the School websites for ECU's areas of research focus.

As a PhD or PhD (Integrated) candidate, you will be expected to develop a project that can be completed in three years full-time. You may submit your thesis any time after 2 years of full-time study, and the maximum course duration for either course is four years full-time.



## POSTGRADUATE RESEARCH SUPPORT SERVICES

### GRADUATE RESEARCH SERVICES (GRS) OFFERS ASSISTANCE AND SUPPORT TO DOCTORAL AND MASTER BY RESEARCH CANDIDATES.

GRS provides a comprehensive training program for research students, including training workshops and seminars, academic resources, social and networking opportunities, and peer-to-peer support.

### UNIQUE SUPPORT

The GRS support programs include:

- An orientation program and events to help you get started
- A free comprehensive online and face-to-face research training program, to help you develop new research and professional skills
- Special seminars with guest presenters from business and industry groups
- Opportunities to network with other researchers
- Opportunities to collaborate with industry to advance your career, e.g. internships, industry-supported projects, etc.
- Support for planning your career beyond your research degree.

### SUPPORT OPPORTUNITIES ADVICE RESOURCES CENTRE

The SOAR Centre is a peer-to-peer service provided by Higher Degree by Research candidates who will help you build social and academic networks, and provide support for research skills training, career development and cultural transition.

For more information, visit [ecu.edu.au/centres/graduate-research-services/soar-centre](http://ecu.edu.au/centres/graduate-research-services/soar-centre)

# POSTGRADUATE COURSE LIST

## ARTS & HUMANITIES

The School of Arts and Humanities offers a diverse range of coursework and research degrees in a variety of disciplines, spread across the university's three campuses. This includes media and communication, psychology and counselling.

We're also home to one of the world's best film and television schools, the Western Australian Screen Academy. We're committed to conducting research that has a strong social and cultural impact, while contributing to the vibrancy of the research culture at ECU.

COURSE	MIN. YEARS STUDY	CAMPUS	AVAILABILITY
Graduate Certificate of Counselling >	0.5	OL	PT
Graduate Certificate of Counselling and Psychotherapy	0.5	JO	FT PT
Graduate Certificate of Psychology >	1	OL	PT
Graduate Diploma of Broadcasting	1	ML	FT
Graduate Diploma of Counselling and Psychotherapy	1	JO	FT PT
Graduate Diploma of Psychology >	1.5	OL	PT
Graduate Diploma of Psychology (Advanced) >	1.5	OL	PT
Master of Clinical Psychology	2	JO	FT PT
Master of Communication	1.5	ML OL	FT PT
Master of Counselling >	2	OL	PT
Master of Counselling and Psychotherapy	2	JO	FT PT
Master of Professional Communication	2	ML OL	FT PT
Master of Professional Psychology	1	JO + ML	FT
Master of Screen Studies	1.5	ML	FT
Doctor of Philosophy ▲	*	JO ML SW OL	FT PT
Doctor of Philosophy (Integrated) ▲	*	JO ML SW OL	FT PT

▲ As not all projects are suited to online study and not all disciplines offer this mode, applicants seeking online PhD study will be required to provide additional information to support their application.

> This course/specialisation is available in an accelerated online delivery mode. Visit our website for more information.

### "POSTGRADUATE STUDY AT ECU HAS UNDOUBTEDLY SHAPED ME AS A CLINICIAN."

I knew that ECU had a reputation for teaching Clinical Psychology with an emphasis on the modalities of therapy that really resonated with me. The skills and knowledge I gained assisted me tremendously – I have been able to develop a professional confidence within myself that was totally absent when I first started the course.

The quality of teaching, and the opportunities provided in prac placements have been a highlight for me. The opportunity to do prac at the Pregnancy to Parenthood clinic was really invaluable. Postgraduate study at ECU has undoubtedly shaped me as a clinician.

#### ALEX CODY

ECU Psychology graduate



**JO** Available on the Joondalup Campus

**ML** Available on the Mount Lawley Campus

**SW** Available on the South West (Bunbury) Campus

**OL** Available online

**FT** Available as full-time study

**PT** Available as part-time study

+ Cross Campus attendance requirement

\* Duration is between 2-4 years, please see the website for more details

## BUSINESS & LAW

Whether you're looking to upskill or make a career change, our postgraduate business courses will prepare you to adapt and thrive in challenging situations within modern organisations.

We offer a range of postgraduate courses, at three different levels of study, including Graduate Certificate, Graduate Diploma or Masters. A Masters course can be completed in two years if studied full-time, however Graduate Certificates and Graduate Diplomas are nested within the course. This means you can complete a Graduate Certificate in six months, or a Graduate Diploma in one year of full-time study. This gives you credit into a Masters course. Additionally, Research degrees are available at a Masters or Doctorate level.

COURSE	MIN. YEARS STUDY	CAMPUS	AVAILABILITY
Graduate Certificate of Accounting and Finance	0.5	JO OL	FT PT
Graduate Certificate of Applied Digital Marketing	0.5	JO OL	FT PT
Graduate Certificate of Business	0.5	JO OL	FT PT
Graduate Certificate of Business Analytics	0.5	JO OL	FT PT
Graduate Certificate of Executive Leadership and Management ●	0.5	JO + ML	FT PT
Graduate Certificate of Hospitality Management	0.5	JO OL	FT PT
Graduate Certificate of Human Resource Management ● ➤	0.5	JO OL	FT PT
Graduate Certificate of People and Culture ● ➤	0.5	JO OL	FT PT
Graduate Certificate of People in Project Management ➤	0.5	OL	PT
Graduate Certificate of Project Management ➤	0.5	JO OL	FT PT
Graduate Certificate of Strategic Project Management ➤	0.5	OL	PT
Graduate Certificate of Supply Chain and Logistics Management	1	JO OL	PT
Graduate Diploma of Accounting and Finance	1	JO OL	FT PT
Graduate Diploma of Business ●	1	JO ML OL	FT PT
Graduate Diploma of Business Analytics	1	JO OL	FT PT
Graduate Diploma of Human Resource Management ➤	1	JO OL	FT PT
Graduate Diploma of Project Management ➤	1	JO OL	FT PT
Graduate Diploma of Supply Chain and Logistics Management	1	JO OL	FT PT
Master of Business Administration ● <b>Specialisations:</b> Business Analytics, Cyber Security Studies, Design Thinking, Entrepreneurship and Innovation, Environmental Management, Finance, Health Care Leadership and Management, Hospitality Management, Human Resource Management, Information Systems, Management of Occupational Health and Safety, Marketing, People and Culture, Professional Internship, Project Management, Supply Chain and Logistics Management	2	JO ML OL	FT PT

● Delivery of this course includes a variation to ECU's standard class times, days or locations, including for online students.

➤ This course/specialisation is available in an accelerated online delivery mode. Visit our website for more information.

### YOUR MBA, YOUR WAY.

ECU's Master of Business Administration (MBA) develops and educates highly skilled managers and leaders for making contributions to organisations in an effective and responsible manner. In a globally competitive environment, it is essential to build capability by creating climates and cultures conducive to innovation and advancement. This program offers a broad range of specialisations and flexible study modes including intensive, block, online and traditional semesters. The course provides students with the ability to respond to challenging situations in complex and modern organisations. It also builds and further develops problem-solving skills, and effective interpersonal and relationship management, with a focus on professional and personal development.

# POSTGRADUATE COURSE LIST

## BUSINESS & LAW (CONTINUED)

COURSE	MIN. YEARS STUDY	CAMPUS	AVAILABILITY
Master of Business Administration International <b>Specialisations:</b> Cyber Security Studies, Design Thinking, Engineering Management, Entrepreneurship and Innovation, Environmental Management, Finance, Hospitality Management, Human Resource Management, Information Systems, Marketing, People and Culture, Professional Internship, Project Management, Supply Chain and Logistics Management	2	JO OL	FT PT
Master of Business by Research	2	JO	FT PT
Master of Finance and Banking	2	JO OL	FT PT
Master of Human Resource Management ●➤	1.5	JO OL	FT PT
Master of International Hospitality Management <b>Specialisations:</b> Human Resource Management, Information Systems, Marketing, Professional Internship, Project Management	2	JO OL	FT PT
Master of Laws (Research)	2	JO	FT PT
Master of Management Information Systems	2	JO OL	FT PT
Master of Marketing and Innovation Management <b>Specialisations:</b> Information Systems, Professional Internship, Project Management	2	JO + ML OL	FT PT
Master of Professional Accounting	2	JO OL	FT PT
Master of Project Management ➤	1.5	JO OL	FT PT
Master of Supply Chain and Logistics Management	2	JO OL	FT PT
Doctor of Philosophy	*	JO	FT PT
Doctor of Philosophy (Integrated)	*	JO	FT PT

● Delivery of this course includes a variation to ECU's standard class times, days or locations, including for online students.

➤ This course/specialisation is available in an accelerated online delivery mode. Visit our website for more information.

### "I NEVER IMAGINED THAT AN MBA COULD GIVE YOU SO MUCH MORE THAN JUST KNOWLEDGE."

My goal is to become a successful businesswoman and run my own consultancy firm, so I decided to further my education by completing a Graduate Certificate and then a Graduate Diploma of Business at ECU. With support from my lecturers, I was inspired to continue into the MBA.

During my studies I was taught leadership skills and have managed human resources, financial resources, and physical assets. I learnt the skills and knowledge to deliver services that align to business objectives in a range of business areas.

I am now more confident; have better self-regulation skills; and have learnt to build networks with well-respected professionals.

#### MARINA SARKOSKI

ECU Business graduate



**JO** Available on the Joondalup Campus

**ML** Available on the Mount Lawley Campus

**SW** Available on the South West (Bunbury) Campus

**OL** Available online

**FT** Available as full-time study

**PT** Available as part-time study

+ Cross Campus attendance requirement

\* Duration is between 2-4 years, please see the website for more details

## ENGINEERING & TECHNOLOGY

**At ECU's School of Engineering, you'll study in some of the best-equipped, industry-grade engineering labs in Australia, and have the opportunity to develop innovative solutions to real-world engineering problems.**

ECU is ranked in the top 175 universities in the world for Engineering by the Times Higher Education World University Rankings for 2022.

We offer relevant postgraduate courses of the highest standard in a friendly and supportive environment, where a strong industry focus enriches the teaching, learning and research outcomes.

With an ECU engineering degree, you'll graduate as a world-ready engineer, able to work globally and capable of meeting the challenges of the future.

COURSE	MIN. YEARS STUDY	CAMPUS	AVAILABILITY
Graduate Certificate in Environmental Engineering <b>NEW</b>	1	JO	PT
Graduate Certificate in Industrial Automation Engineering <b>NEW</b>	1	JO	PT
Graduate Certificate in Renewable Energy Engineering <b>NEW</b>	1	JO	PT
Graduate Diploma in Petroleum Engineering	1	JO	FT PT
Master of Engineering <b>Specialisations:</b> Chemical Engineering, Civil Engineering, Civil and Environmental Engineering, Computer Systems Engineering, Electrical Power Engineering, Electrical and Renewable Energy Engineering, Electronics and Communications Engineering, Instrumentation Control and Automation Engineering, Mechanical Engineering, Mechatronics Engineering, Petroleum Engineering	2	JO	FT PT
Master of Engineering Science	2	JO	FT PT
Master of Technology <b>NEW</b> <b>Specialisations:</b> Chemical Engineering, Civil Engineering, Electrical Engineering, Mechanical Engineering, Petroleum Engineering	2	JO	FT PT
Master of Technology (Petroleum Engineering)	1.5	JO	FT PT
Doctor of Philosophy	*	JO	FT PT



### RESEARCH RANKING AND STRENGTHS

ECU has been ranked first in Australia in Physical Sciences and Engineering for the proportion of publications in the top 1%, 5% and 10% most frequently cited (2021 CWTS Leiden Ranking for Research). With a future focus and global outlook, ECU has a broad range of engineering excellence and experience across key research areas including:

- Renewable energy resources
- Subsurface energy and resources
- Water resources
- Waste recycling and management
- Materials, manufacturing and infrastructure
- Structural engineering
- Communications, monitoring and control
- Chemical and process engineering
- Robotics, electronics and embedded systems
- Thermofluids
- Geotechnical and geoenvironmental

# POSTGRADUATE COURSE LIST

## MEDICAL & HEALTH SCIENCES

ECU's School of Medical and Health Sciences offers postgraduate studies in both coursework and research streams. Here, you'll have an opportunity to up-skill or specialise in your current profession in areas as diverse as Strength and Conditioning, Exercise Medicine (Oncology), Neurological Rehabilitation, Occupational Hygiene, Nutrition and Dietetics and Paramedicine. Or perhaps pivot with a career change through study in Public Health or Occupational Health and Safety.

The School conducts ground-breaking research through research centres and institutes, which are: the Centre for Precision Health (CPH), the Exercise Medicine Research Institute (EMRI) and the Nutrition & Health Innovation Research Institute (NHIR). This not only creates exciting opportunities for postgraduate research students, but also allows coursework students to gain insights from ground-breaking research and learn from world leading researchers.

COURSE	MIN. YEARS STUDY	CAMPUS	AVAILABILITY
Graduate Certificate in Neurological Rehabilitation	0.5	OL	FT PT
Graduate Certificate in Occupational Health and Safety	0.5	OL	FT PT
Graduate Certificate in Public Health	0.5	JO OL	FT PT
Graduate Certificate of Critical Care Paramedicine	0.5	JO OL	FT PT
Graduate Certificate of Exercise Medicine (Oncology)	0.5	OL	FT PT
Graduate Certificate of Exercise Science (Strength and Conditioning)	0.5	OL	FT PT
Graduate Certificate of Extended Care Paramedicine	0.5	OL	FT PT
Graduate Certificate of Occupational Hygiene ●	0.5	OL	FT, PT
Graduate Diploma of Critical Care Paramedicine	1	JO OL	FT PT

### CHANGING THE WORLD

The School of Medical and Health Sciences has been conducting ground-breaking research in a range of areas related to health and wellbeing. This includes developing revolutionary new treatments for spinal cord injuries, the development of exercise as medicine for cancer patients, and utilising blood tests to detect haemochromatosis and melanoma.

Through their highly-skilled approaches and dedication, our researchers continue to advance and revolutionise the ways we can improve the health of Australians, with the creation of pioneering studies, innovative tests and life-changing tools.

To find out more visit

[www.ecu.edu.au/research/worldclass](http://www.ecu.edu.au/research/worldclass)





**JO** Available on the Joondalup Campus

**ML** Available on the Mount Lawley Campus

**SW** Available on the South West (Bunbury) Campus

**OL** Available online

**FT** Available as full-time study

**PT** Available as part-time study

+ Cross Campus attendance requirement

\* Duration is between 2-4 years, please see the website for more details

COURSE	MIN. YEARS STUDY	CAMPUS	AVAILABILITY
Graduate Diploma of Exercise Medicine (Oncology)	1	OL	FT PT
Graduate Diploma of Extended Care Paramedicine	1	OL	FT PT
Graduate Diploma of Occupational Health and Safety	1	OL	FT PT
Graduate Diploma of Occupational Hygiene ●	1	OL	FT PT
Graduate Diploma of Public Health	1	JO OL	FT PT
Master of Critical Care Paramedicine ●	1.5	JO OL	FT PT
Master of Exercise Medicine (Oncology) ●	1.5	OL	FT PT
Master of Exercise Science (Strength and Conditioning) ●	1.5	OL	FT PT
Master of Medical and Health Science by Research ▲	2	JO OL	FT PT
Master of Nutrition and Dietetics ●	1.5	JO	FT PT
Master of Occupational Health and Safety ●	2	OL	FT PT
Master of Occupational Hygiene and Toxicology ●	2	OL	FT PT
Master of Paramedic Practitioner ●	1.5	OL	FT PT
Master of Public Health	2	JO OL	FT PT
Doctor of Philosophy ▲	*	JO OL	FT PT
Doctor of Philosophy (Integrated) ▲	*	JO OL	FT PT

▲ As not all projects are suited to online study and not all disciplines offer this mode, applicants seeking online Master by Research or PhD study will be required to provide additional information to support their application.

● Delivery of this course includes a variation to ECU's standard class times, days or locations, including for online students.

### "I DEFINITELY RECOMMEND CONDUCTING AN INDUSTRY-BASED PHD AT ECU."

Conducting my PhD in Sports Science through ECU and the West Coast Eagles has allowed me to create great networks at the university and within the industry. All parties have provided tremendous support to allow my research project to run smoothly.

ECU also has a fantastic group of staff dedicated to supporting postgraduate students with upskilling sessions, webinars, and extra advice sessions to ensure students receive the help they require.

I would definitely recommend conducting an industry-based PhD at ECU as it has really broadened my skillset and exposed me to a large variety of opportunities.

#### **CALLUM MCCASKIE**

ECU Sports Science PhD candidate



# POSTGRADUATE COURSE LIST

## NURSING & MIDWIFERY

The School of Nursing and Midwifery seeks to make a real difference to people and their families, their careers, our communities, and the broader health sector. We have a unique range of educational and research programs and offer world-class facilities and strong academic leadership in the fields of nursing and midwifery postgraduate studies.

We firmly believe that with the right support, everyone can achieve their ambitions and excel in their careers. Our postgraduate courses are offered online, and developed in collaboration with health care partners to ensure contemporary and responsive curricula to enhance our students' knowledge and career progression.

COURSE	MIN. YEARS STUDY	CAMPUS	AVAILABILITY
Graduate Certificate in Care of the Ageing	0.5	OL	FT PT
Graduate Certificate in Children and Young People's Nursing	1	OL	PT
Graduate Certificate in Mental Health	0.5	OL	FT PT
Graduate Certificate in Midwifery Diagnostics and Prescribing	0.5	OL	FT PT
Master of Clinical Nursing <b>Specialisations:</b> Advanced Nursing, Children and Young People's Nursing, Critical Care Nursing - Intensive Care, Emergency Nursing, Mental Health	2	OL	FT PT
Master of Midwifery (Research)	2	JO OL	FT PT
Master of Midwifery Practice ●	2	JO	PT
Master of Nurse Education	1.5	OL	FT PT
Master of Nursing	2	JO OL	FT PT
Master of Nursing (Graduate Entry)	2	JO	FT PT
Master of Nursing (Nurse Practitioner) ●	1.5	OL	FT PT
Master of Nursing (Research)	2	JO OL	FT PT
Doctor of Philosophy ▲	*	JO SW OL	FT PT
Doctor of Philosophy (Integrated) ▲	*	JO SW OL	FT PT

▲ As not all projects are suited to online study and not all disciplines offer this mode, applicants seeking online Master by Research or PhD study will be required to provide additional information to support their application.

● Delivery of this course includes a variation to ECU's standard class times, days or locations, including for online students.



### WORLD-CLASS NURSING EXPERIENCE

Our world-class researchers collaborate with clinical experts and research leaders globally in the development, conduct and application of our research.

Our postgraduate programs, focusing on improving health and well-being across the lifespan, are internationally recognised. As a result, our nursing program has been ranked in the top 100 in the world in the latest QS World University Subject Rankings.

**JO** Available on the Joondalup Campus

**ML** Available on the Mount Lawley Campus

**SW** Available on the South West (Bunbury) Campus

**OL** Available online

**FT** Available as full-time study

**PT** Available as part-time study

+ Cross Campus attendance requirement

\* Duration is between 2-4 years, please see the website for more details

## SCIENCE

The School of Science offers a diverse range of industry-relevant courses in the areas of environmental sciences, mathematics, bioinformatics, computing & security, cyber security and other sciences. Our courses are informed by an active research program, with the School being home to diverse research groups covering natural sciences, data science, physics, computing, security and technology. Our research aims to find positive solutions to real-world problems related to the environment and the way we live and work.

Led by highly-qualified staff and dedicated and internationally recognised researchers, the School is supported by state-of-the-art technology and strong links with industry and government. For instance, ECU has recently become the first and only university from Australia to join the International Cyber Security Centre of Excellence as an Affiliate Member. Our dedicated staff and researchers provide a supportive and rewarding experience for all postgraduate students.

COURSE	MIN. YEARS STUDY	CAMPUS	AVAILABILITY
Graduate Certificate in Data Science	0.5	JO OL	FT PT
Graduate Certificate in Environmental Assessment and Management	0.5	JO OL	FT PT
Graduate Certificate of Cyber Security ▶	0.5	JO OL	FT PT
Graduate Diploma in Environmental Science	1	JO OL	FT PT
Master of Bioinformatics	2	JO OL	FT PT
Master of Computer Science	2	JO OL	FT PT
Master of Computing and Security by Research	2	JO OL	FT PT
Master of Cyber Security ▶	2	JO OL	FT PT
Master of Data Science	2	JO OL	FT PT
Master of Environmental Science	2	JO OL	FT PT
Master of Horticultural Science <b>NEW</b>	2	JO	FT PT
Master of Science by Research	2	JO	FT PT
Doctor of Philosophy ▲	*	JO OL	FT PT
Doctor of Philosophy (Integrated) ▲	*	JO OL	FT PT

▲ As not all projects are suited to online study and not all disciplines offer this mode, applicants seeking online Master by Research or PhD study will be required to provide additional information to support their application.

▶ This course/specialisation is available in an accelerated online delivery mode. Visit our website for more information.

### “I RECEIVED AMAZING SUPPORT FROM ALL STAFF AND ASSOCIATED INDUSTRY NETWORKS.”

I had access to a great support system of friendly and approachable academic staff and excellent technical staff whose extensive knowledge base helped guide my research. Being a mum, I had to find the balance with studying and taking care of my young family, and the fact that my course was flexible and the staff so helpful, made it more manageable. I received amazing support from all staff and associated industry networks. ECU also provided support with some funding, as well as modern and well-equipped labs and facilities to carry out my research.

#### EMILY LETTE

ECU Biological Sciences graduate



# POSTGRADUATE COURSE LIST

## TEACHER EDUCATION

ECU's School of Education is a leader in education and education research, in Western Australia and nationally. Our experienced team is passionate about education and strives to find better ways to help you become the best teacher you can be.

The School produces graduates with the skills and knowledge to inspire the next generation to become life long learners. If you have a Bachelor degree in another field and want to be a part of the next generation of outstanding teachers, our Master of Teaching courses are where you start. For qualified teachers, you can upskill or specialise with a Graduate Certificate or Master of Education, or conduct research through our Master of Education by Research or PhD programs.

COURSE	MIN. YEARS STUDY	CAMPUS	AVAILABILITY
Graduate Certificate of Education ● <b>Specialisations:</b> Behaviour and Wellbeing, Educational Leadership, Leading Education ➤, Learning Difficulties, Literacy Education, Secondary: Design and Technology, Secondary: Mathematics, Special Education: Complex Communication Needs, TESOL	1	ML OL	PT
Graduate Certificate of Education (Early Childhood Studies)	1	ML OL	PT
Master of Education ● <b>Specialisations:</b> Behaviour and Wellbeing, Early Childhood Education ➤, Educational Leadership, Leading Education ➤, Learning Difficulties, Literacy Education, Special Education: Complex Communication Needs, TESOL	1	ML OL	FT PT
Master of Education (By Research)	1.5	ML OL	FT PT
Master of Education (Advanced) <b>Specialisations:</b> As per Master of Education	2	ML OL	FT PT
Master of Teaching (Early Childhood) ●	2	ML OL	FT PT
Master of Teaching (Primary) ●	2	ML OL	FT PT
Master of Teaching (Secondary) ● <b>Specialisations:</b> Art Education, Dance Education, Design and Technology Education, Digital Technology Education, Drama Education, English Education, Health and Physical Education, Health Education, Home Economics Education, Humanities and Social Sciences Education, Instrumental Music Education, Languages Other Than English (LOTE), Mathematics Education, Media Education, Music Education, Science Education, TESOL	2	JO ML	FT PT
Doctor of Philosophy ▲	*	JO ML OL	FT PT

▲ As not all projects are suited to online study and not all disciplines offer this mode, applicants seeking online Master by Research or PhD study will be required to provide additional information to support their application.

● Delivery of this course includes a variation to ECU's standard class times, days or locations, including for online students. Cross campus attendance may be required.

➤ This course/specialisation is available in an accelerated online delivery mode. Visit our website for more information.



### "TEACHING WAS A NATURAL PROGRESSION FROM MENTORING AND TUTORING."

I had spent a large part of my life coaching, mentoring and tutoring. After seeing some wonderful teachers that my own children had, I knew I wanted to be part of it. I wish I had done it 20 years ago!

Being able to use my industry experience to relate real world situations to learning in the classroom is an advantage. And understanding the bigger picture of how education fits the skills we need to fill positions in our industries.

The most rewarding thing about teaching for me is that 'light bulb' moment, where a student who was struggling with a concept goes "a-ha, I get it."

#### RYAN MARLOW

ECU Secondary Education graduate

**JO** Available on the Joondalup Campus

**ML** Available on the Mount Lawley Campus

**SW** Available on the South West (Bunbury) Campus

**OL** Available online

**FT** Available as full-time study

**PT** Available as part-time study

+ Cross Campus attendance requirement

\* Duration is between 2-4 years, please see the website for more details

# WAAPA

The Western Australian Academy of Performing Arts (WAAPA) at ECU is one of the world's most celebrated performing arts academies. WAAPA has a thriving postgraduate research program covering a range of performing arts disciplines, with particular strengths in practice-led research.

WAAPA staff and postgraduate students are involved in a multitude of projects across the disciplinary range of the Academy to better understand the why, what, how, who, when, or where of artistic practices – past and present, future and contemporary.

Some researchers look back to discover who was important in the consolidation of arts, or why particular strategies in teaching or the creation of work proved to be successful, or otherwise. Other researchers make investigations in the moment, creating a design, musical score, complex prop, performance work, poem or film.

COURSE	MIN. YEARS STUDY	CAMPUS	AVAILABILITY
Master of Arts (Performing Arts)	2	ML	FT PT
Doctor of Philosophy ▲	*	ML OL	FT PT
Doctor of Philosophy (Integrated) ▲	*	ML OL	FT PT

▲ As not all projects are suited to online study and not all disciplines offer this mode, applicants seeking online Master by Research or PhD study will be required to provide additional information to support their application.



## WAAPA'S PERCUSSION MAESTRO RECEIVES 2021 FULBRIGHT SCHOLAR AWARD

ECU's Coordinator of Classical Music, Tim White, has received a 2021 Fulbright Scholar Award. Fulbright is one of the most widely recognised and prestigious international exchange programs in the world. Mr White heads up WAAPA's classical music department, where he also directs the percussion and orchestral programmes. He was Principal Percussionist of the WA Symphony Orchestra for 28 years and is passionate about music education and contemporary percussion performance practice – fields he says have grown exponentially in size, imagination and creativity in recent years. As a Fulbright Scholar, Mr White plans to spend four months at the University of California at San Diego (UCSD) in 2022. He will collaborate with the leading international scholar/practitioner Professor Steven Schick and with UCSD's red fish blue fish percussion ensemble. His research will explore the future possibilities of percussion and percussion education, new directions in composer/performer collaboration, and the roles of expressivity and gesture in percussion performance.

**"COMPLETING MY PHD THROUGH WAAPA AT ECU HAS BEEN FAR AND AWAY MY MOST CHALLENGING AND REWARDING EXPERIENCE TO DATE, DRIVING PERSONAL AND PROFESSIONAL DEVELOPMENT IN WAYS THAT I COULD NEVER HAVE IMAGINED PRIOR TO STARTING."**

This growth was made possible by an expert and incredibly supportive school who went above-and-beyond throughout to help me succeed. The department's focus on practice-led research is a particular strength that allows for unique insights into real-world opportunities and impediments facing artists. While demanding, I thoroughly enjoyed the time spent on my PhD and have no hesitation recommending WAAPA as the place to go for those willing to embrace the challenge!

**NICK ABBEY**

WAAPA PhD graduate



# FEES & FINANCIAL ASSISTANCE



## COMMONWEALTH ASSISTANCE

If you are enrolled in a full-fee course, you may be eligible to defer the payment of your tuition fees on a FEE-HELP loan. Some postgraduate courses are Commonwealth supported and you are only charged a Student Contribution amount. You may be eligible to defer the payment of this contribution on a HECS-HELP loan.

For more information, visit [ecuworldready.com.au/fees](http://ecuworldready.com.au/fees)

## STUDENT SERVICES AND AMENITIES FEE

This is a compulsory payment collected by the University for the provision of services including health, counselling, sport and recreation, social clubs and societies, student welfare, careers advice, student advocacy, orientation and student representation.

## OTHER EXPENSES

You will be responsible for purchasing textbooks and any equipment required for your course. The cost of these items varies widely from one course to another. Other expenses that you may incur include food, parking, consumables such as stationery and photocopying, as well as transport costs to and from university, including any work placements or off-campus activities.

## POSTGRADUATE COURSEWORK TUITION FEES

The tuition fees you pay are based on what course and units you choose to study. You can estimate the cost of your tuition fees by using our online Fees Calculator available at [fees.ecu.edu.au](http://fees.ecu.edu.au)

Learn more about the fees that apply to you by visiting [ecuworldready.com.au/fees](http://ecuworldready.com.au/fees)

## PHD AND MASTER BY RESEARCH TUITION FEES

Australian and New Zealand citizens, and Australian permanent residents undertaking a Higher Degree by Research (HDR) are funded by the Commonwealth Government under the Research Training Program (RTP). Eligibility will be assessed automatically when you apply for HDR admission. PhD candidates are funded for a maximum period of 4 years full-time, or part-time equivalent; Master by Research candidates are funded for a maximum period of 2 years full-time, or part-time equivalent.

Visit [ecuworldready.com.au/fees](http://ecuworldready.com.au/fees) for more information.





# SCHOLARSHIPS & AWARDS

## **WE OFFER FUNDING OPPORTUNITIES TO POSTGRADUATE AND HIGHER DEGREE BY RESEARCH STUDENTS IN THE FORM OF SCHOLARSHIPS AND AWARDS.**

Here are some examples of the scholarships awarded to students. You can find a full list at [ecuworlready.com.au/scholarships](http://ecuworlready.com.au/scholarships)

### **ECU HIGHER DEGREE BY RESEARCH SCHOLARSHIP**

This scholarship is awarded to individuals with exceptional research potential and includes a stipend to assist with living expenses while you study, and a tuition fee exemption/scholarship. Other allowances may also apply. The scholarship duration varies: up to two years for a Master by Research and up to three years for a Doctor of Philosophy (PhD).

### **SCHOOL OF ENGINEERING PHD FULL TUITION SCHOLARSHIP**

The School of Engineering is offering scholarships to full-time commencing PhD students who can demonstrate outstanding research potential in an engineering discipline. The scholarships cover the full cost of tuition, and are offered for the duration of the course (up to 4 years).

### **INDUSTRY PHD SCHOLARSHIPS**

These scholarships provide pathways for PhD candidates to link with an industry partner, community organisation, or government agency. That means you collaborate with a partner organisation for the duration of your degree, immersing yourself in an authentic industry experience whilst receiving research guidance from your ECU supervisor.

### **POSTGRADUATE BUSINESS SCHOLARSHIPS**

If you can demonstrate employment or membership to a nominated organisation, show excellence in your field and a commitment to your studies, or if you're an alumnus of the School of Business and Law, you may be eligible for a Postgraduate Business Scholarship that provides a fee reduction for the duration of your coursework degree.

### **ECU DONOR SCHOLARSHIPS**

ECU administers many scholarships on behalf of private individuals or organisations with the aim of encouraging you to successfully complete your studies. Scholarships include financial support, typically paid in instalments.

### **HOW TO APPLY**

To be eligible for a scholarship the applicant must also complete the appropriate course admission application. Visit the ECU scholarships website, search for your preferred award, and complete the online application where applicable. You may need to provide additional information to fulfil the application requirements, such as documents to show that you meet the eligibility criteria.

### **KEY DATES & DEADLINES**

When applying for an ECU scholarship, please note the opening and closing dates listed on our website. The online application will only be available between these dates.

### **MORE INFORMATION**

Visit [ecuworlready.com.au/scholarships](http://ecuworlready.com.au/scholarships)

**DON'T JUST  
CHANGE  
YOUR FUTURE,  
CHOOSE IT.**

**BECOME  
WORLD READY  
AT ECU.**

**Contact**

P 134 328  
P (61 8) 6304 0000 (Outside Australia)  
E [futurestudy@ecu.edu.au](mailto:futurestudy@ecu.edu.au)  
W [ecuworlready.com.au](http://ecuworlready.com.au)

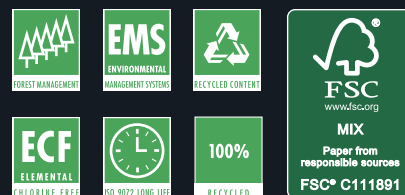
**Find us at**

-  [ECUjourney](#)
-  [edithcowanuni](#)
-  [edithcowanuniversity](#)
-  [school/edith-cowan-university](#)
-  [edithcowanuniversity](#)

**WORLD READY** —

Every effort has been made to ensure that the information in this publication is correct at the time of production. The information is subject to change from time to time and the University requests the right to add, vary or discontinue courses and impose limitations on enrolment in any course. The publication constitutes an expression of interest and is not to be taken as a firm offer or understanding. This publication is intended for Australian citizens and permanent residents only. Some information contained in this publication may not be applicable to international students.

**GREENING ECU:** Edith Cowan University is committed to reducing the environmental impact associated with its operations by conducting its activities in a socially and environmentally responsible manner. This includes implementing strategies and technologies that minimise waste of resources and demonstrate environmentally sensitive development, innovation and continuous improvement.



CRICOS Provider No. 00279B  
RTO Code 4756  
TEQSA ID PRV12160, Australian University  
CS2206322 JUL22

