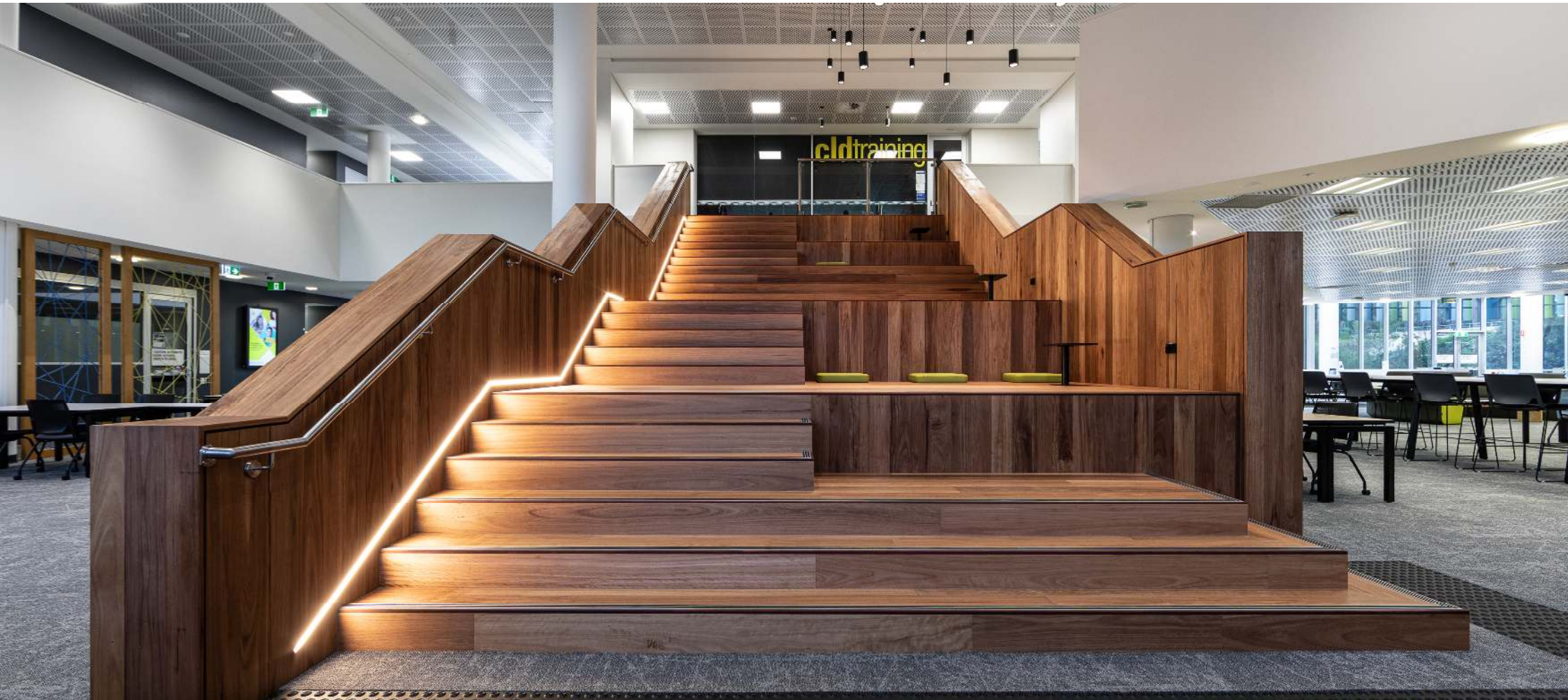
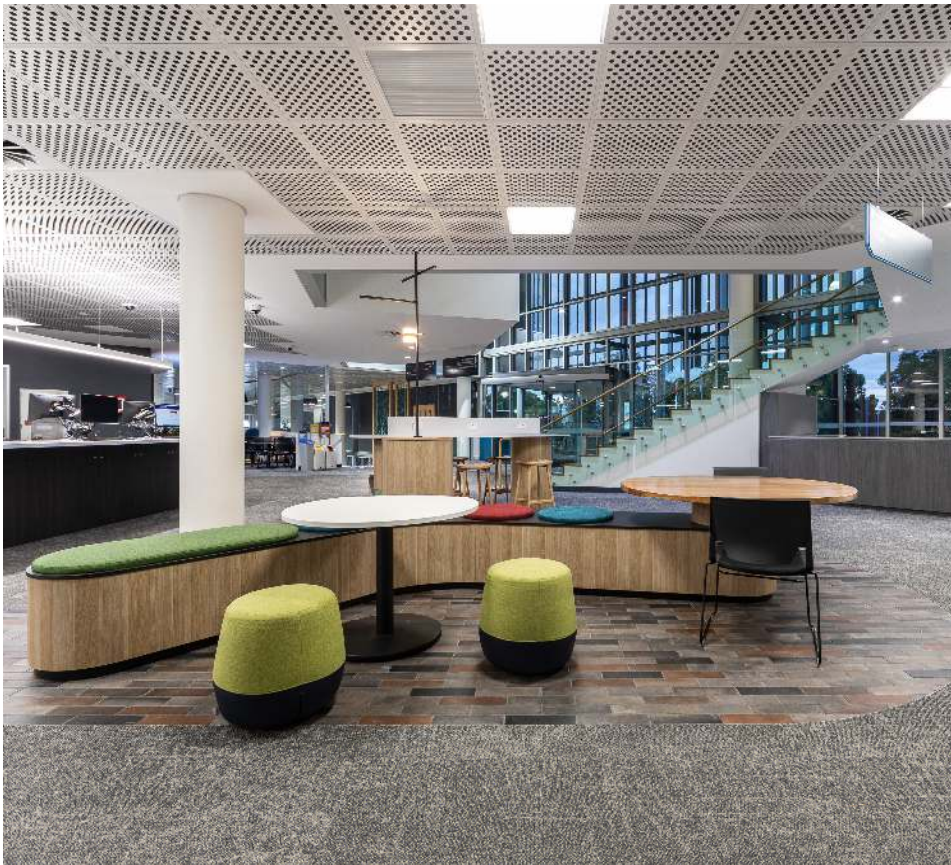


## JOONDALUP LIBRARY ACTIVATION





## Design Intent



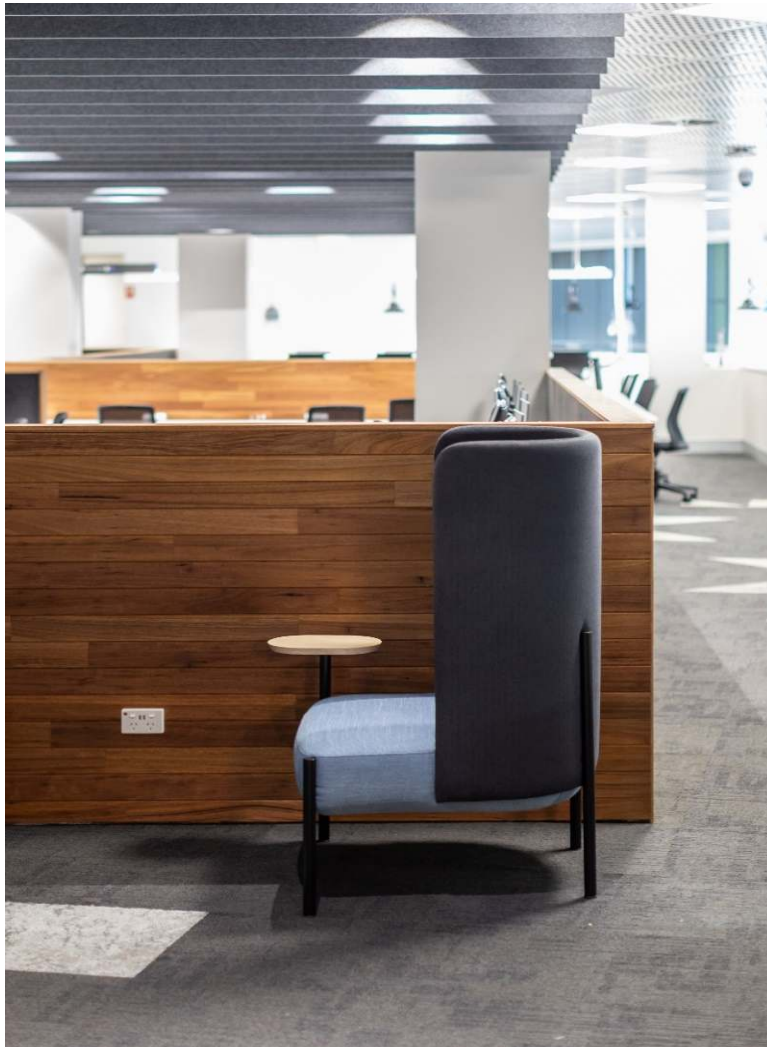
Our aim was to create a series of spaces and opportunities for students to communicate and seek support in different ways.

This has been achieved through a combination of face-to-face collaboration spaces using whiteboards, interactive screens, self-help screens and computers.

There are areas for roaming staff, peer help, instructed learning, informal learning, connecting with external agencies, and spaces for either group work or individual work. Opportunities for student-centred interactions with staff are at the heart of the design.

Interactions are more organic and natural with staff moving towards students to assist them rather than sitting at a fixed staff desk.

## Design Flow



One of the design drivers for the project was to ensure the flow from external spaces, across the floor and between areas, was seamless and inviting.

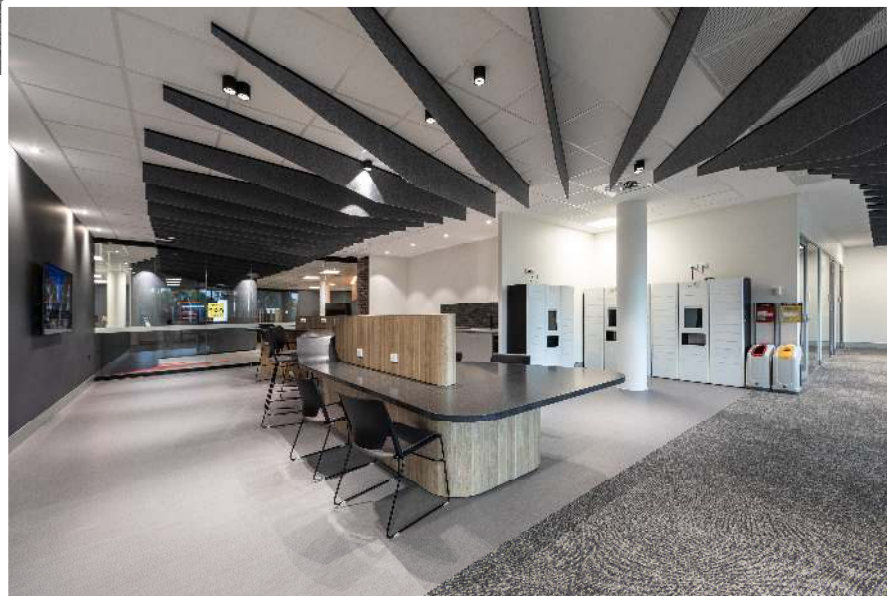
The main thoroughfare was designed as a zone for students to pause, meet, collaborate and seek assistance. The location of furniture and help desks has allowed the flow to be slowed but not impeded. Transitional spaces such as 'the link' (see image page 11) have also been activated to fully utilise the floor area.

The variety of spaces designed into the area allow students to choose locations that they feel comfortable in, whether that is to relax, collaborate, have private conversations, seek advice etc. It is extremely important that the spaces are student-focused, and we want our students to feel a sense of ownership over the space, and to ensure interactions can be student-led.

Some spaces are more permeable such as the huddle areas (the ones with the vertical poles in a circle), with other areas offering different levels of privacy and function to suit a variety of needs.

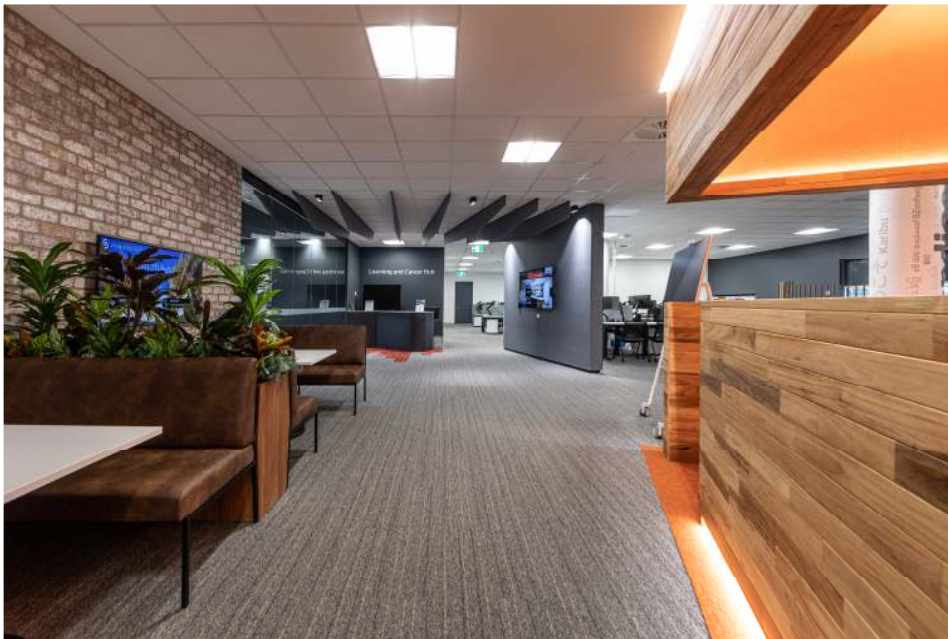


## Design Flow





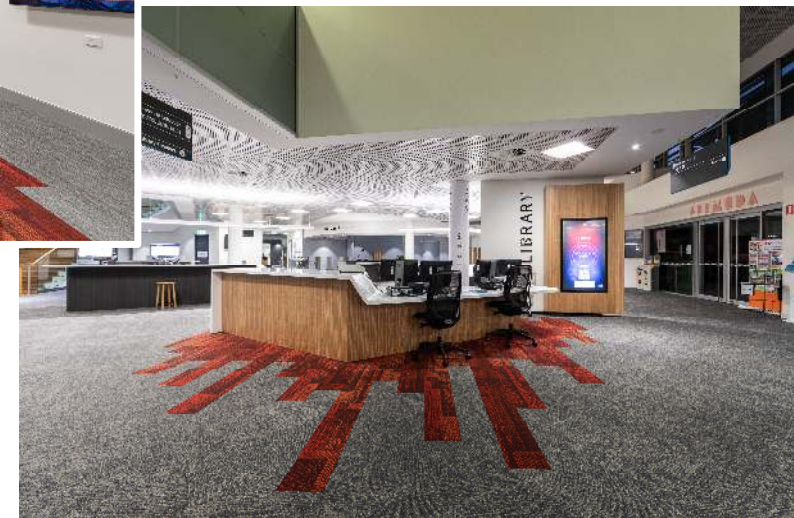
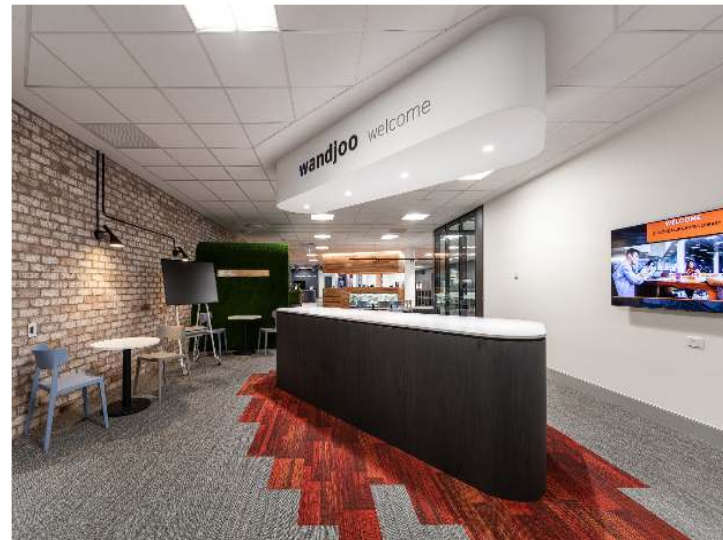
## Design Flow





## Wayfinding Elements

Materiality, form, and emphasis all create part of the intuitive wayfinding that direct students to the appropriate areas for help. Apart from a few fixed points for staff, many of the contact areas are designed in the manner of a concierge model meet and greet format.



## Kaarla Mia (*home fire*)

Kaarla Mia is a place of welcome and sharing. While it is similar to the huddle spaces with the metal poles, the form in the entry is a reflection of the sculptures outside the ECU Joondalup entrance where 14 jarrah poles represent the 14 Aboriginal Groups of the South West region. The aim is to have an Aboriginal artist apply artwork to the posts to reflect what is happening outside, and discussions are currently underway to make this happen.



## Kaarla Mia (*home fire*)

The home-fire circle has been placed on an orange/red carpet to reference the idea of the fireplace. The circle of orange carpet intersects with green and blue, signifying the relationship between earth, fire and sea. The shapes are mirrored in the blue ceiling which has over 700 individual fibre optic cables arranged to mimic the milky way.





## Kaarla Mia (*home fire*)

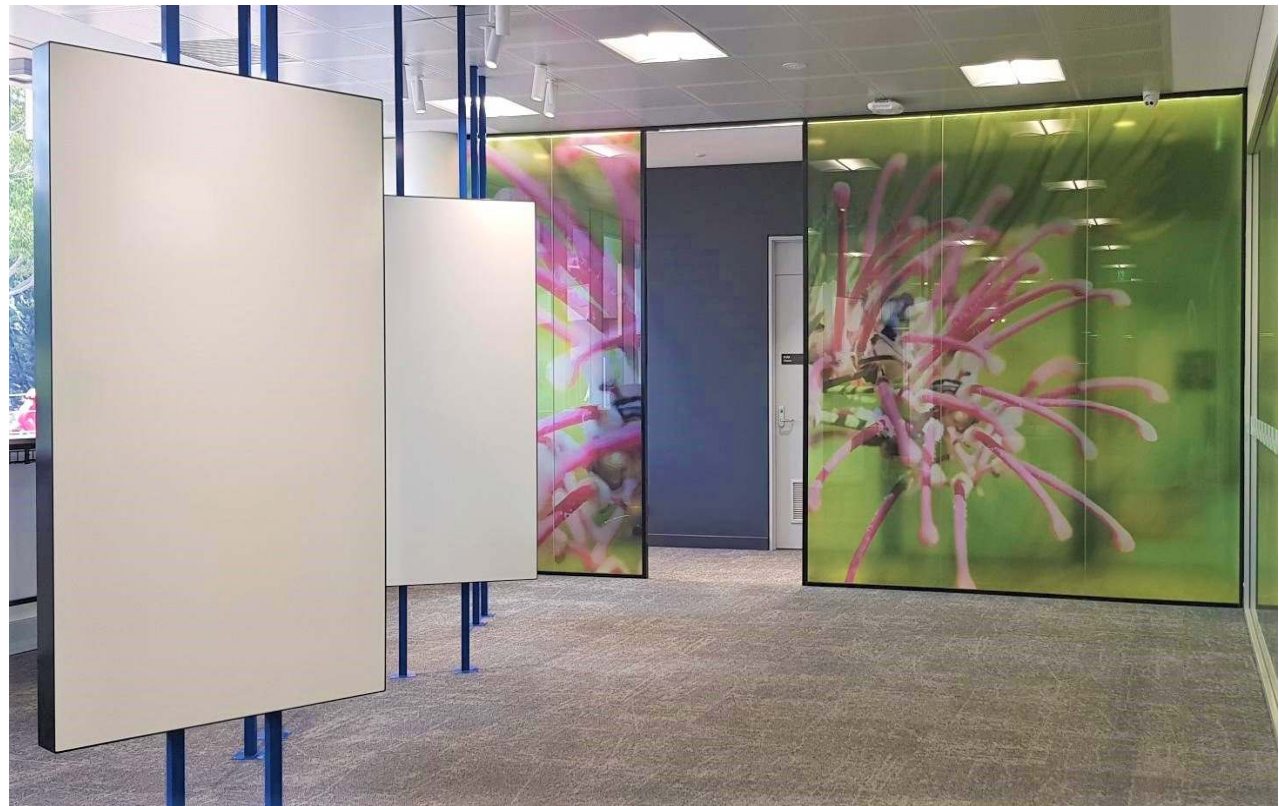
The larger ottomans in Kaarla Mia are covered in fabrics designed by Aboriginal artist Colleen Ngwarraye Morton. She paints *Arreth*, which translates to 'strong bush medicine', paying homage to the significance of traditional bush medicine. Colleen's design is called *Singing Bush Medicine*.



Artist Colleen Ngwarraye Morton

## Glazed Feature Screen

The new glazed screen at the end of this corridor has been emblazoned with large images of Western Australian flora to bring the outside in once again and connect with the vegetation outside the window. The free-standing whiteboards are a place for students to utilise for collaboration, brainstorming and general creativity.





## Ceiling Blades



The grey ceiling blades are a device to visually connect two previously disconnected areas and lead students through the space.

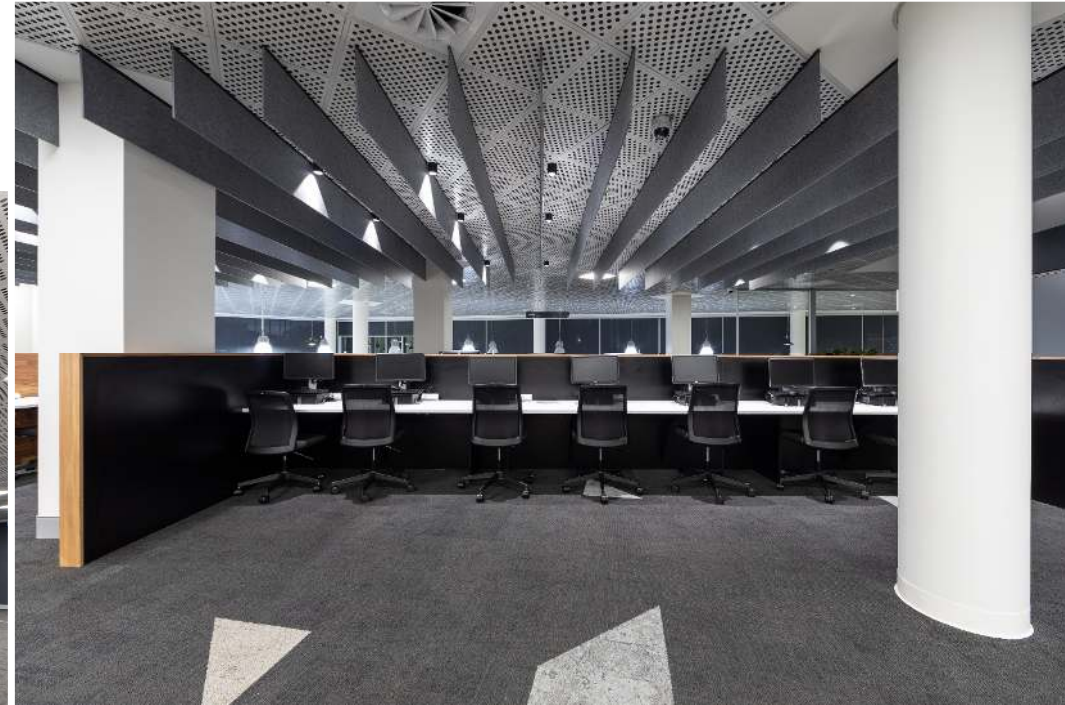
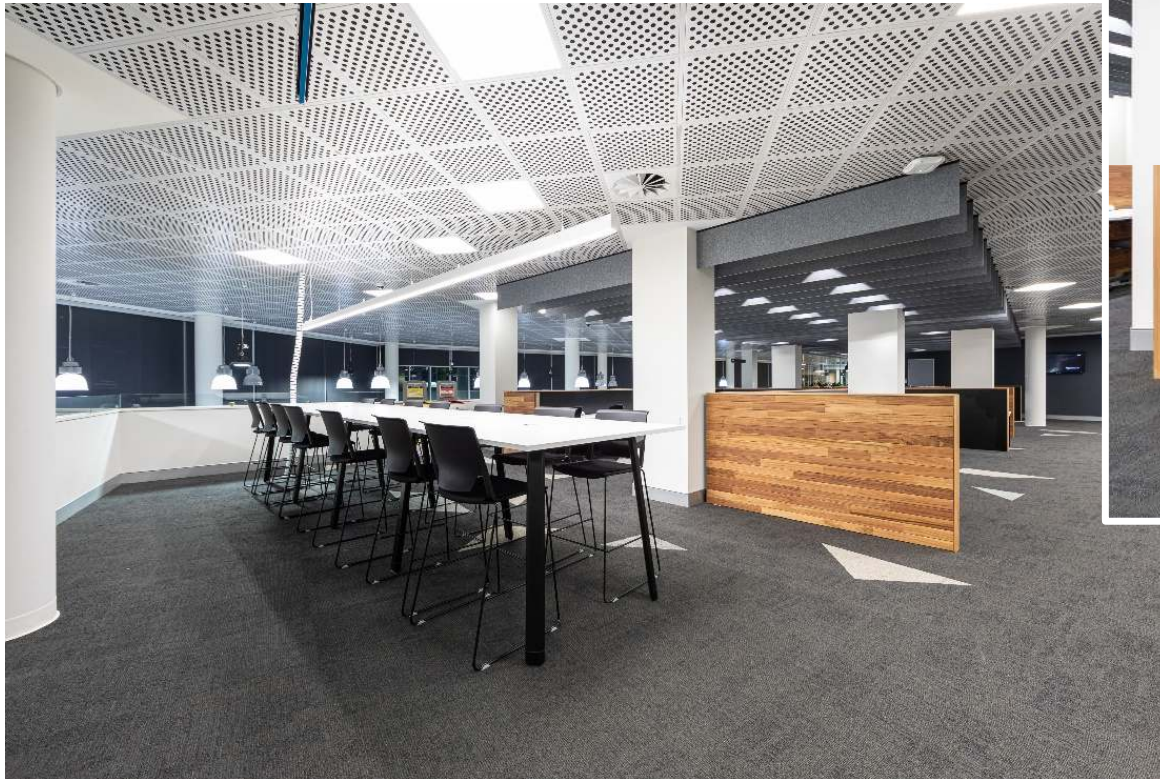
The area was previously a dead-end and has now been opened and filled with light. The same blades are used above the timber enclosure to create linking references. Connection has been a major theme and driver of the project.



*'The Link'*

## eLab

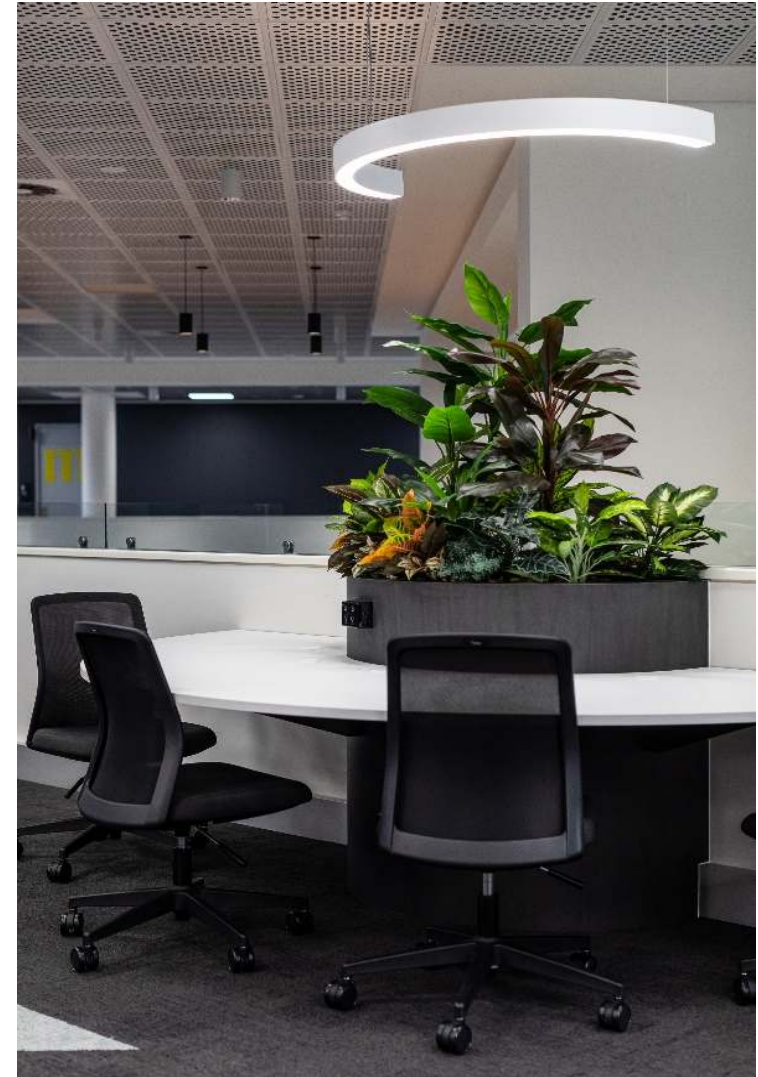
The façade of the eLab has been removed to open up and connect it with the rest of the floor. Removing the barrier around the lift has also helped with the flow. Instead of homogenous seating throughout the eLab we once again varied the seating and gathering types to cater for the different ways that people want to work.





## eLab

Adding greenery to the area helps to bring a sense of wellness and calm in the space while also serving as a visual privacy barrier and once again, the materials and forms are brought through to this area to strengthen the relationship with the other areas on the floor.



## Materiality



*New Stairs*

The materials and finishes used are sophisticated and professional. They are what you would expect to find in commercial and professional spaces, and we felt that spaces for students should speak the same language.

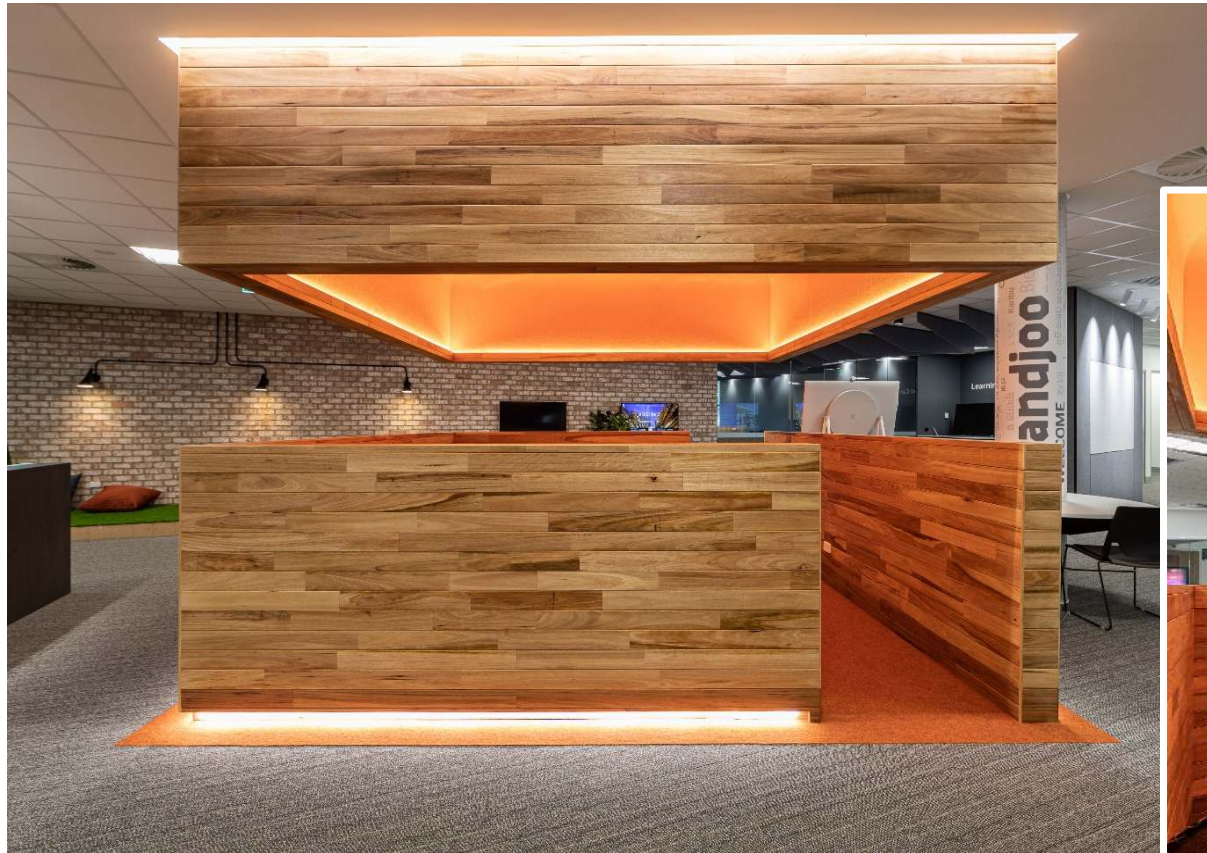
The timbers are Australian (Jarrah and Blackbutt) and have been chosen to create areas of difference but also to tie areas together to make the whole of Level 1 and 2 appear as one space.

Elements such as the Blackbutt timber are used in the Learning and Career Hub, Library Information concierge and eLab. The new stairs are also constructed in Blackbutt timber to help tie the spaces together.





## Materiality



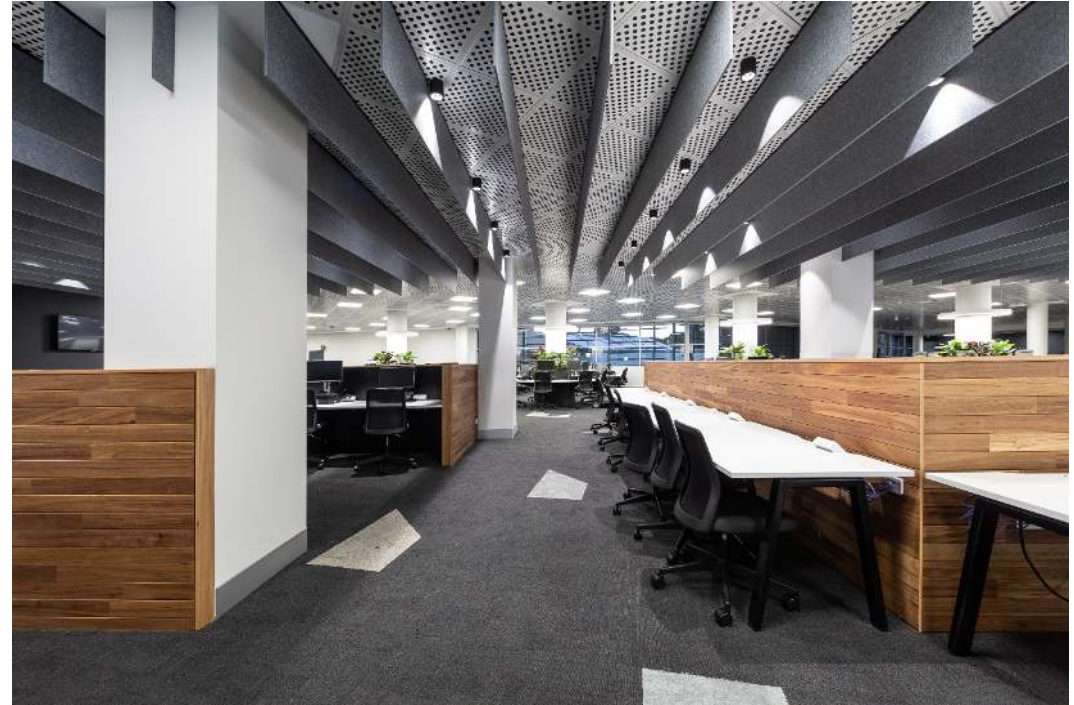
*'The Collective' in the Career and Learning Hub*



## Materiality

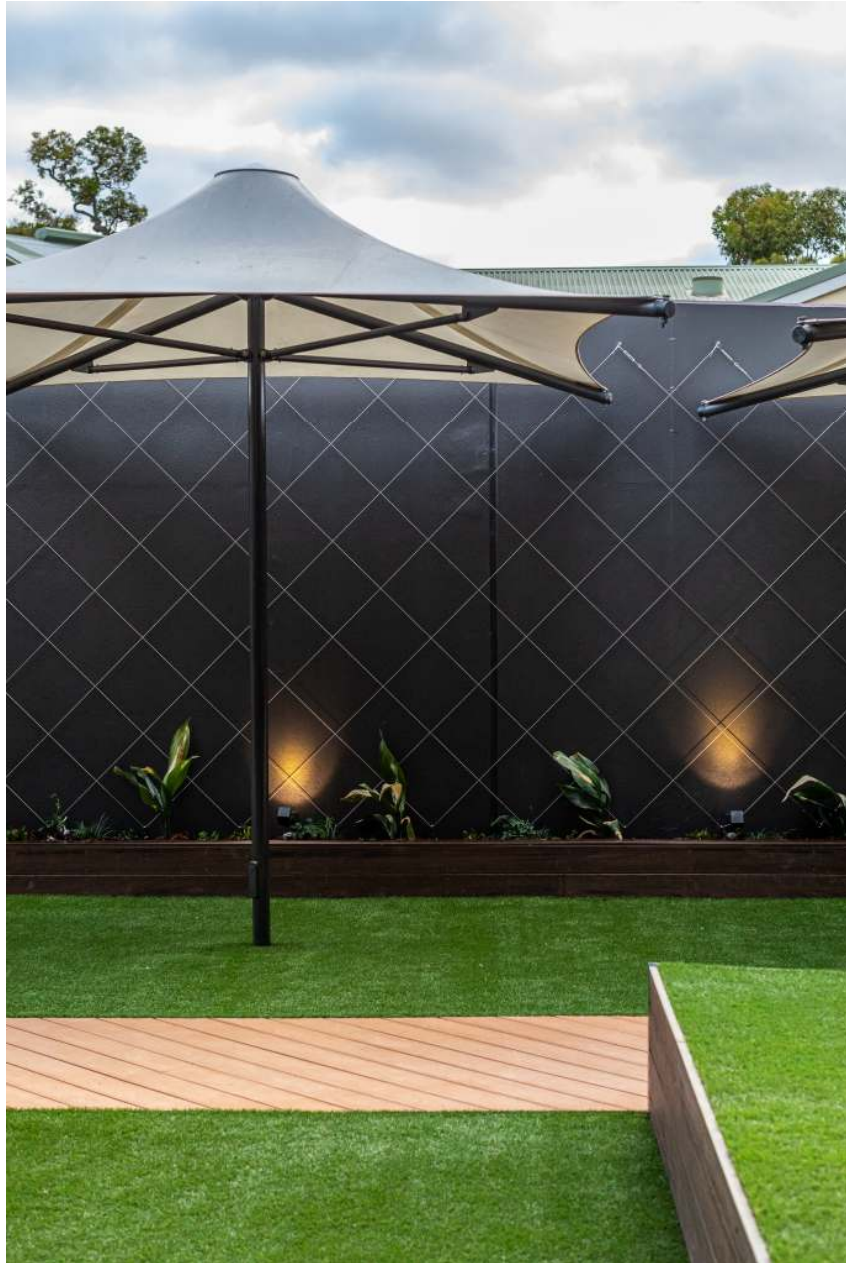


*Kaarla Mia (home fire)*



*eLab*





## **Connection and Courtyard**

The addition of the stairs has been a major design change and now connects the eLab with Level 1 and the courtyard beyond.

There is now a seamless connection between all areas. The stairs themselves are more than a means of getting from one level to another.

They are also an area to sit, pause, present, and collaborate in a different manner. The materials and forms on Level 2 are continued here to strengthen that connection.

The courtyard has been transformed to a place where people are happy to congregate. The greenery over the walls and entry arbour will eventually cover the structures to provide a calm and cooler environment.



## Connection and Courtyard

