



Participant Application Guidelines Asia-Oceania Five Universities Alliance (AOFUA) Summer Camp in Japan 2026



source: https://www.pref.kanagawa.jp/docs/y2w/cnt/f5962/mura_top.html

February 1, 2026

**International Center
Tokyo City University**

AOFUA Summer Camp in Japan 2026

【Background】

The Asia-Oceania Five Universities Alliance (AOFUA) was established in 2018. The participating universities are De La Salle University (Philippines), Edith Cowan University (Australia), SIIT Thammasat University (Thailand), Tokyo City University (Japan), and MJIT Universiti Teknologi Malaysia (Malaysia). The alliance aims to foster global leaders in the Asia-Oceania region, promote science and technology through international collaboration, and foster friendly relations through undergraduate and graduate exchange programs, degree programs, and summer camp programs. Tokyo City University (TCU) will host the sixth Asia-Oceania Five Universities Summer Camp in July 2026.

【Purposes】

- Deepen cross-cultural understanding through interactions and multicultural discussions with students from the five universities.
- Enhance global leadership skills through problem-solving activities in multinational teams that consist of students from each university.
- Learn **Project Cycle Management (PCM)**, a project management method, for tackling the challenges facing an increasingly complex society.

【Main Themes】

Aiming to achieve the "Transforming our world: the 2030 Agenda for Sustainable Development" (SDGs) adopted at the United Nations Summit in September 2015, the main themes of the summer camp will be (1) to combat climate change and its impacts (Goal 13) and (2) to conserve and sustainably use the oceans, seas and marine resources (Goal 14) particularly in the Asia-Oceania region.

Reference: What are the Sustainable Development Goals?

<https://www.undp.org/sustainable-development-goals>

【Contents】

Outline

An online pre-departure orientation will be held before the summer camp. The summer camp in Japan will be based in Shonan Village Center*. However, the opening ceremony and orientation on the first day, as well as the final presentation and closing ceremony on the final day, will be held at TCU's Setagaya Campus.

*Please access the following website to know about Shonan Village Center.

<https://www.shonan-village.co.jp/eng/>

Specific

<Pre-departure>

✧ Online pre-departure orientation

- Points to note when participating in the summer camp (items to bring, overseas travel insurance, etc.).
- How to reach from Narita or Haneda Airport to your hotel on the day of arrival
- Grouping (self-introductions, deciding your group name)
- Pre-study materials and assignments
- Others

<During the summer camp>

✧ **PCM workshop**

- Students will select a specific challenge related to SDGs Goal 13 or 14. Under the guidance of instructors, students will learn the PCM method. Students will carry out group work such as problem analysis, objective analysis, and project selection in multi-national teams. Eventually, students design the details of the project to tackle the set challenge. On the final day, students will present their project.

✧ **Experiential learning (TBD)**

- Field study (Nature experience and/or facility visits)
- Campus tour (TCU Yokohama Campus: the first university campus in Japan that obtained ISO14001 certification)

【Period】

- **Pre-departure Orientation: July 1st Wednesday, 15:00-16:00 Japan time (tentative)**
- **Summer Camp: From July 5th, Sunday to July 10th, Friday**
 - Arrival date: July 5th, Sunday
 - Departure date: July 10th, Friday or later
 - Program period: July 6th, Monday to July 10th, Friday

【Number of participants】

- Five from each university

*5 students x 5 universities = total 25 students, However, it can vary depending on the actual number of applications from the five universities.

【Application process】

- Submit the application form to ECU's international office by Friday 13th March deadline.

Applicant → International center/office of your university

*Please check the email address of your own university.

Edith Cowan University (ECU), Australia -> international.office@ecu.edu.au

【Eligible students】

Those who meet all the following conditions.

- (1) Be an undergraduate or graduate student of an AOFUA partner university at the time of participation
- (2) Be recommended by the university you belong to for the participation
- (3) Be interested in international exchange
- (4) Be able to cover the necessary expenses other than the costs covered by the participation fee
- (5) Be covered by overseas travel insurance or other insurance covering all aspects of your stay

【Application period】

- **February 1st to March 13th, 2026** (Deadline for the submission to your home university)
- **March 13th to March 27th, 2026** Your home University will select and nominate students to TCU

【Selection and an offer letter sent by TCU】

- Selection will be made when the applications exceed five students from one university
- TCU will send an offer letter to the nominated participants by the end of April.

【Costs】

- (1) Participation Fee: **JPY75,000- (appx. AUD\$700)**
- (2) The fee covers accommodation at Tokyo (1 night) and Shonan Village Center (4 nights), welcome lunch, etc.). Please see the following table.
- (3) Any other travel expenses (air fare, visa), living expenses in Japan, and transportation costs within Tokyo should be covered by the participant.
- (4) The payment method and the bank transfer deadline will be announced later.
- (5) Tokyo City University will cover the operating costs of this program (travel expenses between TCU's Setagaya campus and Shonan Village Center, instructor fees, teaching materials, etc.).

as of January 13, 2026

Table: Costs Covered by the Participation Fee

Date	Day	Breakfast	Lunch	Dinner	Accommodation
5-Jul	Sun	×	×	×	○
6-Jul	Mon	○	○	○	○
7-Jul	Tue	○	○	○	○
8-Jul	Wed	○	○	○	○
9-Jul	Thu	○	×	○	○
10-Jul	Fri	○	○	×	×

* ○=Covered, ×= Not covered.

* Transportation: The participation fee includes the transportation from departure from your hotel on July 6th to arrival at Setagaya Campus on July 10th.

* The table is subject to changes.

* If you plan to stay in Japan after July 10th, please sure accommodation by yourself.

【Accommodation】

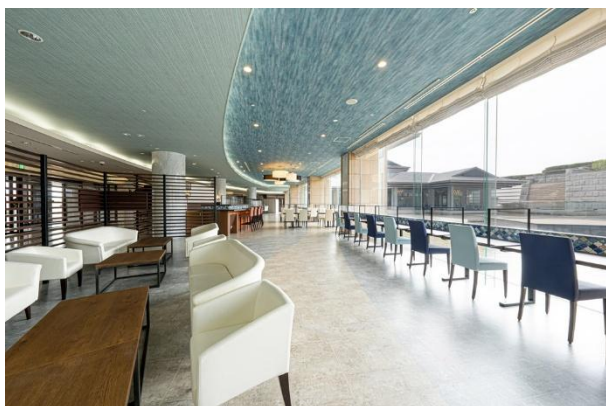
- (1) July 5th (Sun) Check in - July 6th (Mon) Check out (1 night): Hotel near TCU Setagaya campus will be arranged by TCU. Single room with bathroom and toilet.
- (2) July 6th (Mon) Check in - July 9th (Fri) Check-out (4 nights): Accommodation at **Shonan Village Center*** will be arranged by TCU. Twin room with bathroom and toilet.

*Address: 1560-39 Kamiyamaguchi, Hayama Miura-gun, Kanagawa 240-0198, JAPAN

【Schedule: Tentative】

	Time	Activities	Venues
Day 0 July 5, Sun		Arrival day *Participants move from Narita/Haneda Airport to the designated hotel by themselves.	Hotel in Tokyo
Day 1 July 6, Mon	09:00 10:00~10:30 10:30~11:30 11:30~12:30 12:30~13:30 13:30~17:30 17:30 TBA	Hotel -> TCU Setagaya Campus Opening ceremony / Orientation Ice break activities (self-introduction, etc) Lectures Welcome lunch TCU Setagaya Campus -> Field tour -> Shonan Village Center (check-in) Welcome BBQ	TCU Setagaya Campus Shonan Village Center
Day 2 July 7, Tue	09:00~12:00 12:00~13:30 13:30~16:30 after dinner	PCM workshop 1 Lunch break PCM workshop 2 Self-study by each group	Shonan Village Center
Day 3 July 8, Wed	09:00~12:00 12:00~13:30 13:30~16:30 after dinner	PCM workshop 3 Lunch break PCM workshop 4 Self-study by each group	Shonan Village Center
Day 4 July 9, Thu	09:00~10:30 10:30~12:30 12:30~15:30 15:30~16:30 after dinner	Shonan Village Center -> TCU Yokohama Campus Campus tour / Lunch Field trip Field trip -> Shonan Village Center Self-study: presentation preparation	TCU Yokohama Campus Shonan Village Center
Day 5 July 10, Fri	07:30~07:50 08:00~9:30 09:30~10:00 10:00~12:00 12:00~12:45 12:45~13:45 13:45~	check-out Shonan Village Center -> TCU Setagaya Campus Presentation preparation Presentation Closing ceremony Farewell lunch End of program	TCU Setagaya Campus

【Shonan Village Center】



Entrance



Lecture / workshop Room



Room

Source: <https://www.shonan-village.co.jp/>



Swimming pool

【Tokyo City University】



Setagaya Campus



Yokohama Campus

For any queries relating to the AOFUA Summer Camp in Japan, please contact aofua_japan@tcu.ac.jp or ECU International Office international.office@ecu.edu.au