

Medical & Health Sciences

Creative
thinkers
made here.

2024 Course Guide

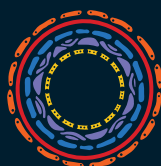
- Addiction Studies
- Applied Chemistry
- Biomedical Science
- Environmental Health
- Exercise & Sports Science
- Exercise Science & Rehabilitation
- Football Performance
- Forensic Science
- Health Promotion
- Health Science
- Human Biology
- Human Genetics
- Medical Science
- Nutrition Bioscience
- Nutrition & Dietetics
- Occupational & Environmental Health & Safety
- Occupational Safety & Health
- Occupational Therapy
- Paramedical Science
- Public Health
- Speech Pathology
- Sport Business

Contents

Medical & Health Sciences at ECU	3
Careers in Focus	
Environmental Health, Occupational Health & Safety,	
Occupational Hygiene	4
Nutrition, Dietetics & Health Promotion	6
Exercise Science	8
Find your feet early with a work placement	10
Diploma of Environmental Health	11
Bachelor of Biomedical Science	12
Bachelor of Biomedical Science (Bioscience) ^{NEW}	14
Bachelor of Health Science	16
Bachelor of Science (Exercise and Sports Science)	18
Bachelor of Science (Exercise Science	
and Rehabilitation)	20
Bachelor of Science (International Exercise	
and Sports Science)	21
Bachelor of Science (Exercise and Sports Science) /	
Bachelor of Commerce (Sport Business)	22
Bachelor of Science (Occupational Therapy)	23
Bachelor of Science (Paramedical Science)	24
Bachelor of Speech Pathology	25
Postgraduate Study	26
Postgraduate Coursework	27
Life as a student	28
What pathway can you take into ECU?	30
How to apply	31



Creative thinkers
made here.



ECU is committed to reconciliation and supports a Voice to Parliament being enshrined in the Australian Constitution. We recognise and respect the significance of Aboriginal and Torres Strait Islander peoples' communities, cultures and histories. We also acknowledge and respect the Noongar people as the traditional custodians of the land on which our campuses are located.



ecu.edu.au/about-ecu/indigenous-matters



Ranked in the world's
top 100 universities
under 50 years old.



The top public university in Australia
for undergraduate teaching quality
for seven years in a row.

Medical & Health Sciences at ECU

At ECU's School of Medical and Health Sciences, you can choose from a diverse range of courses that can lead to exciting careers in the health industry.

As a student, you'll practice new skills in some of the best facilities and specialised laboratories in Australia.

You'll also have opportunities to participate in work placements with one of ECU's many partner organisations as part of your studies.



Superlabs and super facilities

You'll learn all the latest theories in your chosen course, but you'll also spend a lot of time putting your learning into practice.

The good news is that ECU has some of the best facilities you'll find at any university in Australia.

That includes our state-of-the-art Superlabs on the Joondalup Campus, plus specialised facilities and labs for Exercise and Sports Science, Nutrition, Paramedicine and other disciplines.

So you'll not only have the best resources to practice new skills, but when you graduate, you'll have valuable experience using industry-standard equipment.



Get valuable experience through ECU's sports partnerships

If you choose to study one of our sports-related courses, you can take advantage of ECU's strong sporting industry network, including our West Coast Eagles and Perth Glory partnerships. You'll have:

- Work placement opportunities with the football departments, where you can apply your knowledge and learn from some of the best sports performance analysts.
- Access to club facilities, including the ECU High Performance Centre for elite athletic performance and testing at Mineral Resources Park.
- Volunteer opportunities to gain experience at key events during the season.
- Invitations to unique events, facilities tours, industry guest speaker events, and networking opportunities.

Clinical Training Opportunities for Allied Health Students

The Joondalup Community Clinical School is a purpose-built clinical training facility located at Joondalup Health Campus. Students provide services to the community, including nutrition and dietetics, exercise physiology and speech pathology.

The student-led Joondalup Community Clinical School benefits the community, with the provision of high-quality, interprofessional, evidence-based care to a wide range of clients to assist with the management of chronic disease, mental illness, neurological conditions and general health.

Our students also have access to the ECU Health Centre in Wanneroo. These clinics provide opportunities for students to contribute to client assessments and interventions.



Want a career where you get away from a desk and visit all kinds of workplaces?

Like the idea of helping people stay safe at work? Interested in problem solving? What about communicating with people, or delivering training?

If you answered 'yes' to these questions, maybe you should explore a career in environmental health, occupational health and safety (OH&S) or occupational hygiene.

What do environmental health officers do?

- Implement prevention programs and strategies for the control of communicable diseases, such as major outbreaks like coronavirus.
- Mitigate health risks associated with environmental disasters such as those caused by bushfire and floods.
- Ensure public safety during major events and in public places.

Where will you work?

Environmental health officers are appointed as authorised officers under various acts and regulations. They work in local, state and federal government health departments, as well as in the resources sector and many private organisations that handle large quantities of high-risk food, such as supermarket chains, airlines and hotel groups.

What do OH&S officers do?

- Visit a workplace and talk to people about what they do. Analyse this information along with research about 'what could go wrong'.
- Develop and communicate recommendations to the workforce and the management team to ensure they comply with laws and good practice.
- Investigate workplace incidents to find out what actually happened, and provide recommendations to prevent future incidents.

Where will you work?

Most occupational health and safety professionals work in government or in medium to large organisations, all over Australia.

In Western Australia, many of our occupational health and safety graduates work in the mining or oil and gas industries.

What do occupational hygienists do?

Occupational hygienists are usually more highly qualified than OH&S professionals and investigate a range of chemical, physical and biological hazards.

Occupational hygienists:

- Collect and analyse samples to assess worker exposure to physical, chemical and biological agents.
- Evaluate the effectiveness of control strategies implemented to protect against workplace exposures and hazards, e.g. personal protective equipment, ventilation systems.
- Interpret the results of exposure evaluations and determine risk to human health, based on scientific research, and recommend ways to control workplace hazards through engineering methods, improved work procedures and protective equipment.

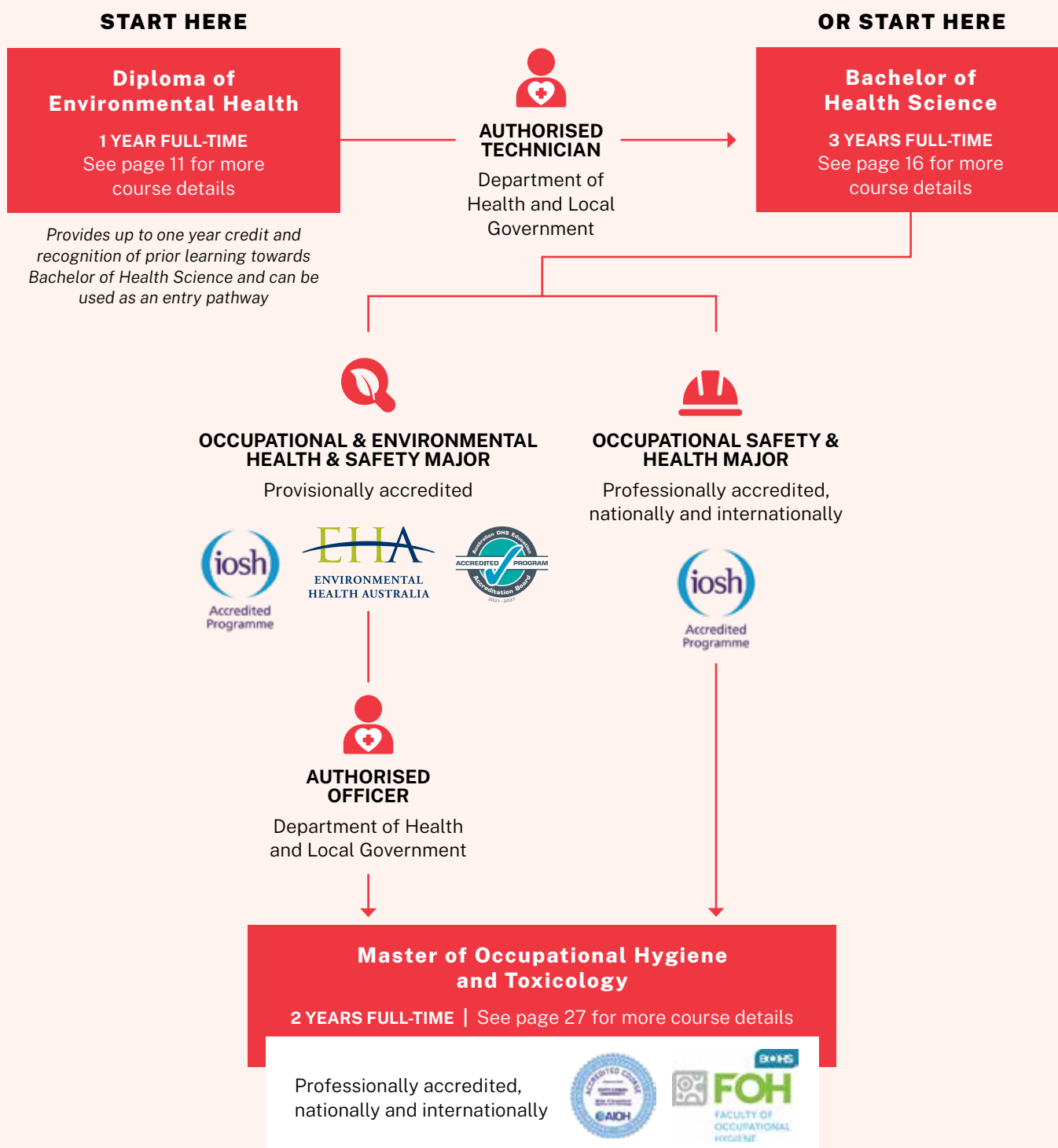
What does the future look like for occupational health and safety related roles?

It's expected that employment opportunities will grow very strongly for Occupational and Environmental Health Professionals over the next few years.

*Source: labourmarketinsights.gov.au, January 2023.

How do you get started?

ECU's Bachelor of Health Science course is a great starting point for a career in occupational health and safety or occupational hygiene. There are different study pathways available to best suit your needs:



“A work placement is one of the best learning experiences I have had.”

Patricia Kouakou
ECU Environmental Health student



Are you interested in healthy eating and what's in the food we eat?

Like the idea of helping people or communities to improve their health? Would you be comfortable communicating dietary and health information to lots of people?

If you answered 'yes' to these questions, maybe you should explore a career in nutrition, dietetics or health promotion.

What do nutritionists do?

- Provide evidence-based nutrition services related to public health nutrition, policy, research and community health.
- Plan diets and menus for groups and populations, calculate nutritional values of food served and help people understand how to plan and prepare food to improve health and wellbeing.
- Design, conduct and evaluate nutrition and population health intervention programs, and compile educational material.

What do dietitians do?

Dietitians can provide the same range of evidence-based nutrition services as nutritionists, but are also qualified to:

- Provide evidence-based nutrition services as well as individual dietary counselling, medical nutrition therapy and group dietary therapy.
- Work with other health professionals to manage the dietary and nutritional needs of individuals.
- Influence food providers and governments on food-related policies and practices that support health.

What do health promotion professionals do?

- Identify audiences most at risk and establish the appropriate method(s) to promote health and assist with behaviour change.
- Engage schools, community and vulnerable groups to increase awareness about personal health and global health issues.
- Work with partners to write materials and educate the community.
- Undertake research to ensure data is up-to-date, relevant and translated for use by the community.

Where will you work?

Nutritionists, dietitians and health promotion professionals work in many regions across Australia, and in industries such as health care and social assistance, local government, hospitals, education and training.

What does the future look like?

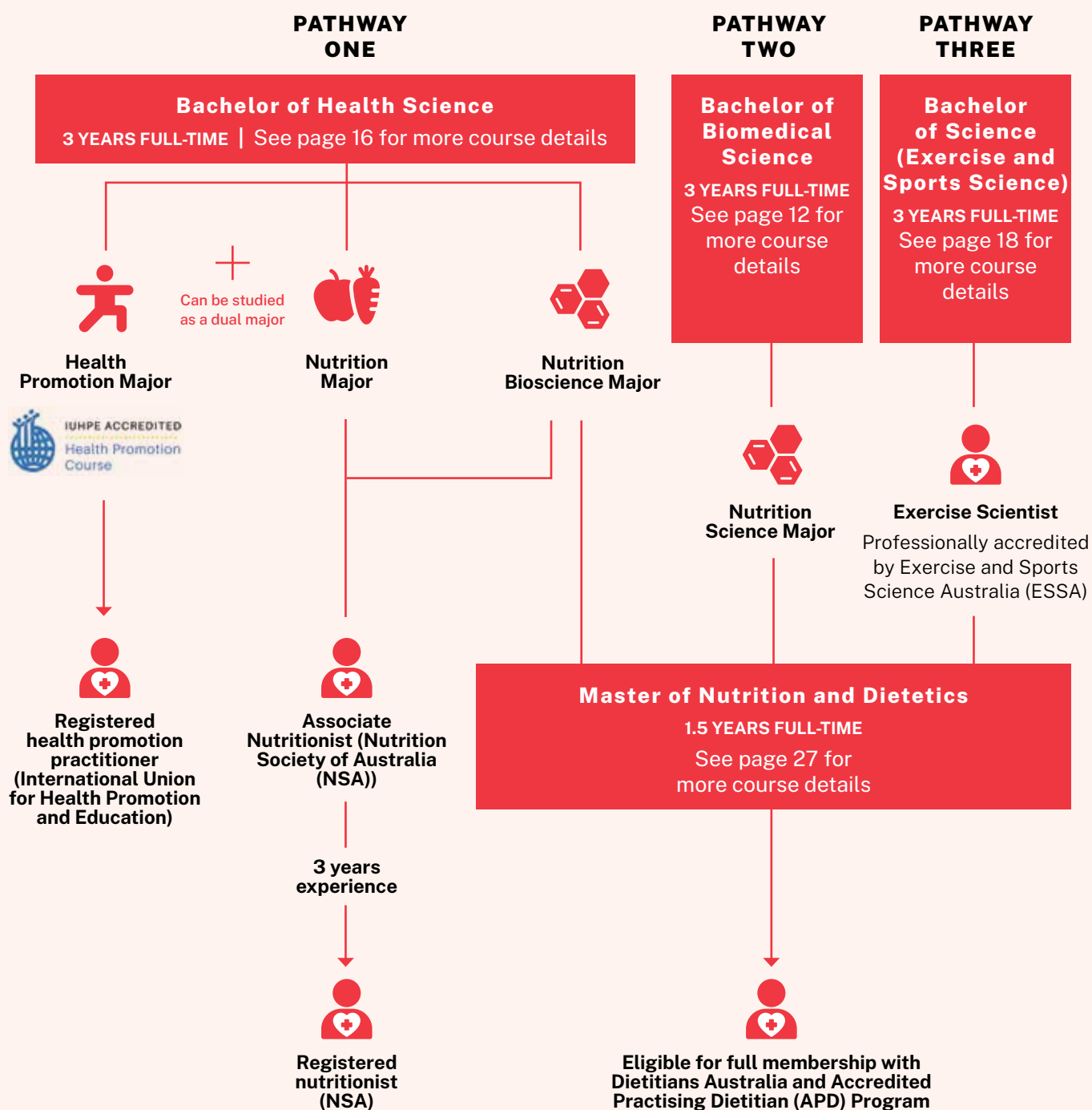
Demand for nutrition professionals, which includes dietitians and nutritionists, is expected to grow moderately to 2026.

*Source: labourmarketinsights.gov.au, January 2023.

How do you get started?

ECU offers different pathways to become a nutritionist, dietitian, or health promotion professional.

To become an accredited practising dietitian, you can apply to study for a Master's degree after you've finished your Bachelor's degree.



“There is so much support from ECU staff, and making connections with lecturers has provided me with a lot of opportunities.”

Michaela De Paolis
ECU Nutrition and Health Promotion student



Are you interested in health, fitness and general wellbeing?

Do you like the idea of helping other people improve their lifestyle or sports performance through exercise? Are you a good communicator, able to relate to all kinds of people?

If you answered 'yes' to these questions, maybe you should explore a career in Exercise Science. ECU offers courses which lead to three distinct accredited professions in the health and fitness and professional sports industries. You could study to become an exercise scientist, exercise physiologist, or a strength and conditioning coach.

What do exercise scientists do?

- Assess, design and deliver exercise and physical activity programs.
- Use exercise to improve people's health and fitness, wellbeing or performance.
- Use exercise to prevent chronic health conditions.
- Promote and implement the adoption of physical activity and/or exercise with individuals, communities, and specific populations.

Where will you work?

Exercise scientists work worldwide in varied roles, including fitness, coaching, sport, community health, health promotion, corporate health, wellbeing, employment screening and aged care.

What do exercise physiologists do?

In addition to the roles undertaken by exercise scientists above, Accredited Exercise Physiologists (AEPs) are qualified to:

- Assess, plan and implement exercise programs for preventing and managing chronic diseases and injuries, such as cardiovascular disease, diabetes, osteoporosis, depression, cancer and arthritis.
- Assist in restoring optimal physical function, and health and wellness.
- Educate people in rehabilitation procedures, including home exercises and lifestyle changes, to enhance patients' health and wellbeing.

Where will you work?

AEPs work in varied settings, including public and private hospitals, multidisciplinary clinics, workplace health and rehabilitation, residential aged care facilities, sporting settings, government and education.

What does the future look like for exercise scientists and exercise physiologists?

More professionals will be needed in these fields to address Australia's growing and ageing population, to tackle trends such as the rise in obesity levels and the emergence of exercise as medicine for cancer patients.

What do strength and conditioning coaches do?

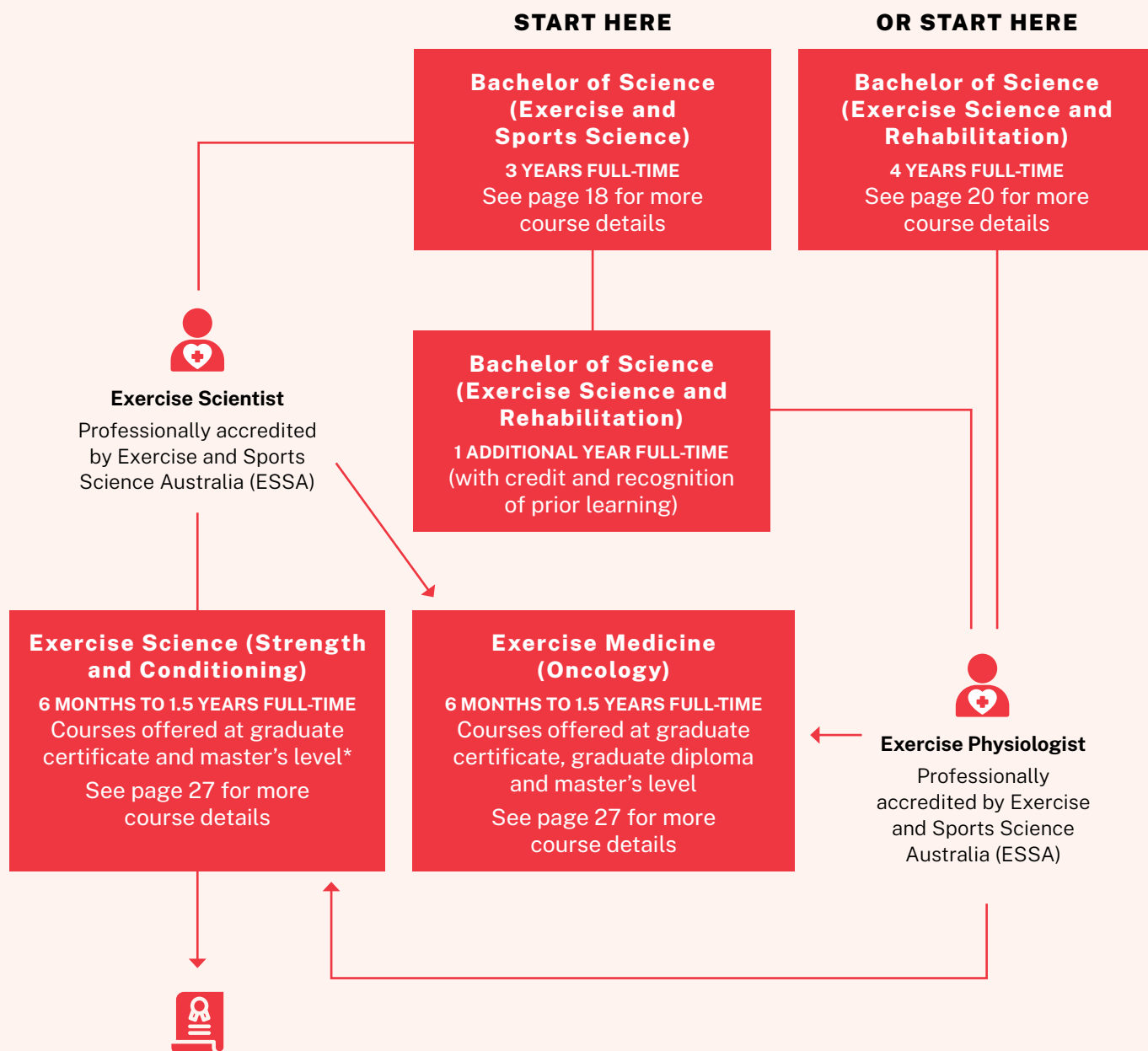
- Design and implement strength training and conditioning programs in-season, off-season, and pre-season for athletic programs.
- Work in cooperation with sports medicine or athletic training staff in the rehabilitation and strengthening of injured athletes.
- Develop systems for tracking athlete attendance and athlete progress in conjunction with the sport coaches.

Where will you work?

Strength and conditioning coaches are employed across Australia and throughout the world. This includes working in professional and amateur sports, as well as in workplaces with high physical demands, such as the military, police and fire and emergency services.

How do you get started?

There are two starting points to kick off a career in Exercise Science and, as you can see below, there are also options for further study, depending on your choice of specialisation.



“One of the things I loved through my studies at ECU was the support I got not only from the staff and lecturers but also from the students.”

Joel Skinner
ECU Exercise Science and Rehabilitation graduate,
Accredited Exercise Physiologist, Accredited Exercise
Scientist, Team Leader, Absolute Balance

Find your feet early with a work placement

During your studies, you'll have the opportunity to undertake supervised work placements across a wide range of health, education and community-based settings.

This includes working at ECU clinics, hospitals, schools, public health settings, aged care facilities, high-performance and community sport and exercise organisations, and ambulance services in metropolitan or rural sites.

Depending on your course, these practical placements can start as early as your first few weeks as a student.

One of the great things about placements is they give you the chance to make new contacts in your future industry.

They also give you a real taste of workplaces, allowing you to test not only your new theoretical knowledge, but also your soft skills, including your ability to work as part of a team and more.

Placements are good for your confidence as well as your résumé!

Liam Guy, Bachelor of Health Science graduate, demonstrates this through his 2-week practical placement with the WA Country Health Service in Northam. He found the experience invaluable and was able to create and publish health promotion resources and participate in events.



“My practical placement was really valuable as it ultimately led to my first health promotion job.”

Liam Guy
ECU Health Science graduate

ECU City

Our new campus in the heart of the Perth CBD will represent the future of university education – urban, connected, integrated with business and community – and part of the lifeblood of a thriving city.

ECU City will seamlessly bring together Creative Industries, Business and Technology to deliver a world-class university campus that reimagines education and transforms the city of Perth.

ECU City will open to students from 2026.



To follow the journey, visit
citycampus.ecu.edu.au



Diploma of Environmental Health

Indicative ATAR: Not Applicable

Duration: 1 year full-time or part-time equivalent

Availability:	JO	ML	SW	OL
Full-time	*		*	*
Part-time				

* Students can only commence full-time study if commencing in Semester 1.

Prepares students to make a positive contribution to the health of communities. Students graduate with the ability to think critically about prevention and control of communicable and environmental disease and a range of other environmental health issues, to work independently and as part of a team, and to plan and coordinate environmental health projects.

Practicum

Students undertake a professional placement unit which comprises a 200-hour placement in an environmental health department. There are attendance requirements for this practicum. For more information, see course details on our website.

Pre-practicum Preparation

To be eligible to undertake practicum placements, students are required to complete a range of different tasks (for example, obtaining a police clearance, receiving immunisations and completing first aid training). For more information, see course details on our website.

Non-Standard Timetable

On-campus students: the Communicable Disease Control unit (HST2184) is only available to study online.

Employment Opportunities

Graduates will be employable in state government, shire and city health departments in a support role to environmental health officers.

Careers

Environmental Health Assistant, Environmental Health Cadet, Environmental Health Technical Officer



See more course information — ecu.edu.au/courses/C54



Bachelor of Biomedical Science

Indicative ATAR: 70

Duration:	3 years full-time or part-time equivalent			
Availability:	JO	ML	SW	OL
Full-time	■			
Part-time	■			

Biomedical Science is a continually changing, dynamic field with long-term career prospects, including roles in management, research, education and specialised laboratory work. Biomedical scientists focus on how cells, organs and systems function in the human body. Their work is an important element in our understanding and treatment of human diseases.

This course introduces a broad range of theory, including studies in anatomy, physiology, microbiology, immunology, genetics, biochemistry and biomedical ethics, while giving you extensive practical experience in cutting-edge laboratories located in our purpose-built Science building.

As a Biomedical Science graduate, you can also continue on to specialise in one of these fields: medical science, medical microbiology, genetics, haematology, histopathology, anthropology, cytology, human biology, immunology, medicine, nutrition science, forensic science, biochemistry, data science, clinical chemistry or evolutionary medicine.

Admission Requirements

One or more of the majors in this course have admission requirements. Refer to the major for more information.

Practicum

MMS3500 Professional Practice in Biomedical Science: students will complete a minimum of 100 hours of unpaid work placement.

In this final-year unit, students gain work experience that aligns with their chosen field of biomedical science specialisation to broaden their industry networks and develop graduate capabilities. Students may undertake a range of supervised activities in clinical, laboratory, professional or simulated settings, to build familiarity with authentic workplace environments, apply critical thinking to assist decision making and further develop discipline knowledge and capabilities. There are attendance requirements for this work experience.

Pre-practicum Preparation

To be eligible to undertake practicum placements, students are required to complete a range of different tasks (for example, obtaining a police clearance, receiving immunisations and completing first aid training). For more information, see course details on our website.



“I now have a strong understanding of the human body and, paired with extensive practical experience, I believe I will sufficiently transition into studying medicine.”

Sophie Chandler
ECU Biomedical Science graduate

Non-Standard Timetable

MMS3500 Professional Practice in Biomedical Science: students will complete a minimum of 100 hours of unpaid placement outside of the timetabled class activities.

Careers

Audiology, Biochemistry Technician, Biomedical Technician, Forensic Laboratory Technician, Haematology Technician, Histology Technician, Laboratory Manager, Laboratory Technician, Medical Researcher, Medical Sales Representative, Microbiology Technician, Science Communicator

Available Majors	JO	ML	SW	OL
Applied Chemistry	■			
Data Science	■			
Forensic Science	■			
Human Biology	■			
Human Genetics	■			
Medical Science	■			
Nutrition Science	■			



See more course information —
ecu.edu.au/courses/K05

Biomedical Science Majors



Applied Chemistry

Develop your analytical and instrumentation skills and use diverse methods to investigate the chemical nature of all kinds of substances.



Data Science

Become an expert in statistics so you can analyse and visualise complex data sets from diverse sources, including biomedicine or business.



Forensic Science

Understand forensic investigations by developing a holistic approach that spans evidence collection, testing and analysis techniques, and even prosecution.



Human Biology

Learn about biomedical analyses of human health and disease, including traditional studies in genetics, anatomy and physiology and evolution.



Human Genetics

Study the latest in genetics research and become highly skilled in molecular biology and genetics, including the emerging field of bioinformatics.



Medical Science

Study anatomy, physiology, human genetics and human evolution and ecology, while building your practical experience in our cutting-edge Superlabs.



Nutrition Science

Delve into understanding nutrition with a focus on human physiology and nutritional biochemistry, providing a pathway to postgraduate studies in dietetics.



Bachelor of Biomedical Science (Bioscience) NEW

Indicative ATAR: 70

Duration: 4 years full-time

Availability: JO ML SW OL

Full-time



Part-time

Secondary Location

The first two years are delivered by Edith Cowan University on the Joondalup Campus. The third year is delivered by the University of Portsmouth in the United Kingdom on-campus, and the fourth year is delivered by Edith Cowan University on-campus.

This International Dual Degree provides you with an opportunity to gain valuable international experience while receiving two degrees. Graduates will receive both a Bachelor of Biomedical Science (Bioscience) from ECU and a BSc (Hons) Biomedical Science with Human Biosciences from the University of Portsmouth (UK).

Biomedical science is a continually changing, dynamic field with long-term career prospects, including roles in management, research, education and specialised laboratory work. Biomedical scientists focus on how cells, organs and systems function in the human body. Their work is an important element in our understanding and treatment of human diseases.

This course introduces a broad range of theory, including studies in anatomy, physiology, microbiology, immunology, genetics, biochemistry and biomedical ethics, while giving you extensive practical experience in cutting-edge laboratories located in our purpose-built Science building.

As a Biomedical Science graduate, you can also continue on to specialise in one of these fields: medical science, medical microbiology, genetics, haematology, histopathology, anthropology, cytology, human biology, immunology, medicine, nutrition science, forensic science, biochemistry, data science, clinical chemistry or evolutionary medicine.

Admission Requirements

One or more of the majors in this course have admission requirements. Refer to the major for more information.

Practicum

MMS3500 Professional Practice in Biomedical Science: students will complete a minimum of 100 hours of unpaid work placement.

In this final-year unit, students gain work experience that aligns with their chosen field of biomedical science specialisation to broaden their industry networks and develop graduate capabilities. Students may undertake a range of supervised activities in clinical, laboratory, professional or simulated settings, to build familiarity with authentic workplace environments, apply critical thinking to assist decision making and further develop discipline knowledge and capabilities. There are attendance requirements for this work experience.

Pre-practicum Preparation

To be eligible to undertake practicum placements, students are required to complete a range of different tasks (for example, obtaining a police clearance, receiving immunisations and completing first aid training). For more information, see course details on our website.





Non-Standard Timetable

MMS3500 Professional Practice in Biomedical Science: students will complete a minimum of 100 hours of unpaid placement outside of the timetabled class activities.

Careers

Audiology, Biochemistry Technician, Forensic Laboratory Technician, Haematology Technician, Histology Technician, Laboratory Manager, Laboratory Technician, Laboratory Scientist, Medical Researcher, Medical Sales Representative, Research Officer, Science Communicator

Available Majors	JO	ML	SW	OL
Applied Chemistry	■			
Data Science	■			
Forensic Science	■			
Human Biology	■			
Human Genetics	■			
Medical Science	■			
Nutrition Science	■			

→ See more course information — ecu.edu.au/courses/T89

Dual Degrees at ECU and the University of Portsmouth

ECU and the University of Portsmouth (UK) are working in partnership to provide students a truly global educational experience while receiving two degrees.

Based between both universities, students will study for a dual degree in less time than it would take to study both degrees consecutively.

Students benefit from the teaching expertise, research and facilities of both institutions, expanding their life experience, and benefiting from studying their chosen field in an international context.

→ For more information visit — ecu.edu.au/uni-portsmouth



Bachelor of Health Science

Indicative ATAR: 70

Duration: 3 years full-time or part-time equivalent

Availability:	JO	ML	SW	OL
Full-time	■		■	■
Part-time	■		■	■

Some majors can only be studied on-campus and students should refer to the delivery options listed against each major for further details.

ECU South West: Please note that only the Majors of Occupational Safety and Health, Nutrition, Health Promotion and Occupational and Environmental Health and Safety can be studied on-campus.

Health Science is broad, but essentially, it's all about enhancing the health of communities. That includes tackling a range of health-related societal problems such as obesity, harmful alcohol and drug use and even dealing with a global pandemic!

In this degree, you'll study the core concepts of public health and access tools that will prepare you for the real world. Studying Health Science at ECU will give you skills to not only assess and monitor health situations, but you'll also learn intervention strategies so you can make a difference to the lives and health of others. You'll also gain valuable industry experience through a work placement in your final year.

And because you have a choice of one or more major subjects in this degree, you'll learn specific skills in an area that interests you. The Bachelor of Health Science gives you a choice of six majors – Addiction Studies, Health Promotion, Nutrition, Nutrition Bioscience, Occupational and Environmental Health and Safety, and Occupational Safety and Health.

You'll be surprised how many diverse workplaces have career opportunities for our Health Science graduates.

Practicum

Students are required to complete 75 hours of Professional Practice in their third year of study. There are attendance requirements for this practicum. For more information, see course details on our website.

Pre-practicum Preparation

To be eligible to undertake practicum placements, students are required to complete a range of different tasks (for example, obtaining a police clearance, receiving immunisations and completing first aid training). For more information, see course details on our website.

Employment Opportunities

Employment opportunities exist within a range of workplaces, including aged care facilities and hospitals, rural and regional settings, asthma/diabetes/cancer/injury prevention councils, heart foundations, family planning associations, alcohol and other drug agencies, mining, oil and gas industries, community development and local government organisations, disability services, justice and correctional agencies, research institutes, international aid organisations, and mental health support agencies.

Careers

Child Health Officer, Community Health Officer, Environmental Health Officer, Health Promotion Officer, Health Worker, Health Promotion Nutritionist, Nutritionist, Occupational Safety and Health Management Officer, Youth Worker

Available Majors	JO	ML	SW	OL
Addiction Studies	■			■
Health Promotion	■		■	■
Nutrition	■		■	
Nutrition Bioscience	■			
Occupational and Environmental Health & Safety	■		■	■
Occupational Safety and Health	■		■	■

→ See more course information — ecu.edu.au/courses/K97



“I participated in student internships in the iron ore and oil and gas industries. These experiences increased my practical knowledge in OHS, improved soft skills and increased my overall confidence.”

Tiffany Mackinnon
ECU Nutrition and Occupational Safety & Health graduate

Health Science Majors



Addiction Studies

Understand how to reduce the harm associated with excessive behaviour, with a focus on alcohol and other drug use.



Health Promotion

Promote health and wellbeing by influencing human behaviours, creating supportive communities, improving health policies and designing health campaigns that address complex health and social inequities.



Nutrition

Apply science-based knowledge about nutrients and nutritional status throughout the life cycle. Explore community nutrition, food habits and trends and the relationship between nutrition and public health.



Nutrition Bioscience

Delve into understanding nutrition with a focus on human physiology and nutritional biochemistry, providing a pathway to postgraduate studies in dietetics.



Occupational & Environmental Health & Safety

Ensure local communities have safe and healthy food and water, and environments that promote positive health outcomes.



Occupational Safety & Health

Working with people to maintain and improve safety, health and welfare at work.



Bachelor of Science (Exercise and Sports Science)

Indicative ATAR: 70

Duration: 3 years full-time or part-time equivalent

Availability:	JO	ML	SW	OL
Full-time	■			
Part-time	■			

Are you interested in health, fitness and general wellbeing? If you like the idea of helping other people improve their lifestyle or sports performance through exercise, you should explore a career in exercise science. This degree will prepare you for a variety of professional roles—you could work with elite sportspeople, promote health in the community, work in corporate health or a wide range of other exciting environments. The course will give you the skills to design, implement and evaluate programs targeted at improving general health and wellbeing, helping to prevent or reduce the impact of chronic disease and enhancing athletic performance.



You can also specialise in a related field, with majors in Football Performance, Health Promotion, Nutrition, Occupational Safety and Health and Sport Business, helping broaden your career prospects. You can also use this course as a pathway to further study in areas such as clinical exercise physiology, education, dietetics and strength and conditioning coaching.

You can study units for this degree on-campus with weekly lectures and laboratories, or through a blended format that involves weekly online content, such as lectures, laboratories, tutorials and/or seminars, accompanied by timetabled, intensive on-campus laboratory sessions twice per semester.

Practicum

Students are required to complete two mandatory practicum units: SPS3112 Exercise and Sports Science Practicum (140 hours), SPS2524 Exercise Delivery (30 hours).

There are attendance requirements for these practicums.

Pre-practicum Preparation

To be eligible to undertake practicum placements, students are required to complete a range of different tasks (for example, obtaining a police clearance, receiving immunisations and completing first aid training). For more information, see course details on our website.

Professional Recognition

Exercise and Sports Science Australia (ESSA) has accredited this course. Graduating students will be eligible to apply for accreditation credentialing with ESSA. Please refer to the ESSA website for further information regarding the application process: www.essa.org.au

Employment Opportunities

Graduates have successful careers in specialty areas such as exercise rehabilitation, sports administration, teaching, sports coaching, exercise science, strength and conditioning, corporate fitness, workplace health, sports development and sports performance analysis.

Non-Standard Timetable

Students who select the majors of Health Promotion, Nutrition and Occupational Safety and Health are able to study some units on campus at ECU South West. In order to complete the course, however, students should be prepared to complete the remaining units at the Joondalup Campus.

Careers

Exercise Scientist, Exercise Physiologist, Biomechanist, Personal Trainer, Sports Coach, Sports & Exercise Scientist, Researcher, Strength & Conditioning Coach, Sports Medicine Trainer

Available Majors	JO	ML	SW	OL
Football Performance	■			
Health Promotion	■		■	■
Nutrition	■		■	
Occupational Safety and Health	■		■	■
Sport Business	■			■



See more course information —
ecu.edu.au/courses/M89

Exercise Science Majors



Football Performance

Learn how to apply the exercise and sports science skills of coaching, performance analysis, player monitoring, leadership, injury management and athlete development to soccer and AFL.



Health Promotion

Learn to increase people's ability to make healthy choices and promote preventive health and wellness to reduce health inequality in the community.



Nutrition

Learn about nutrients in food and assessing nutritional status, community nutrition issues, the psychology and sociology of food and much more.



Occupational Safety & Health

Learn how to identify and investigate occupational hazards and risk management processes to ensure safer workplaces.



Sport Business

Learn about sports science, human resources, marketing, finance, sports law, event operations, public relations and more in preparation for a career or business in sport.



“The course has taken my personal training to the next level. It has also given me the opportunity to work with the West Coast Eagles.”

Ricky LeGuay
ECU Exercise & Sports Science student



Bachelor of Science (Exercise Science and Rehabilitation)

Indicative ATAR: 80

Duration: 4 years full-time or part-time equivalent

Availability:	JO	ML	SW	OL
Full-time	■			
Part-time	■			

Are you interested in using exercise to improve people's health, fitness and general wellbeing? If so, you should consider a career as an exercise physiologist through studying our Bachelor of Science (Exercise Science and Rehabilitation). When you graduate from this degree, you will be eligible to apply to become an Accredited Exercise Physiologist with Exercise and Sports Science Australia (ESSA). Exercise physiologists help other people improve their lifestyle and recover from injuries and chronic conditions through exercise.

In this four-year degree (full-time), you'll gain knowledge, skills and experience in clinical exercise delivery, healthy lifestyle intervention and wellness programs for people living with chronic conditions, disabilities or injuries, as well as the healthy population.

More qualified professionals are expected to be needed as the population grows and ages, with employment opportunities in public and private hospitals, workplace health and rehabilitation, aged care facilities, sports organisations and more.

You can study units for this degree on-campus with weekly lectures and laboratories or through a blended format that involves weekly online content, such as lectures, laboratories, tutorials and/or seminars, accompanied by timetabled, intensive on-campus laboratory sessions twice per semester.

Note: If you complete the Bachelor of Science (Exercise and Sports Science) degree (with the appropriate elective units) and decide that you'd like to pursue a career in exercise rehabilitation, you'll only need to study this course for one year to be eligible to become an Accredited Exercise Physiologist.

Admission Requirements

All applicants are required to be assessed for entry by the Course Coordinator where the student has undertaken prior tertiary study. Students with no prior tertiary study will be assessed by University Admissions.

Applications for this course are not accepted through ECU's Experience Based Entry Scheme.

Practicum

Students are required to complete three mandatory practicum units as part of their course.

Mandatory: SPS3112 Exercise and Sports Science Practicum (140 hours), SPS2524 Exercise Delivery (30 hours), SPS4126 Clinical Exercise Physiology (360 hours). Additionally, the unit SPS3604 (Human Movement – Participation and Inclusion) includes 30 hours of work placement.

There are attendance requirements for this practicum. Students on practicum must observe professional practice rules. For more information, see course details on our website.

Pre-practicum Preparation

To be eligible to undertake practicum placements, students are required to complete a range of different tasks (for example, obtaining a police clearance, receiving immunisations and completing first aid training). For more information, see course details on our website.

Professional Recognition

Exercise and Sports Science Australia (ESSA) has accredited this course. Students will need to graduate to be eligible to apply for accreditation credentialing with ESSA. Please refer to the ESSA website for further information regarding the application process: www.essa.org.au

Careers

Professionally-accredited Exercise Physiologist, Exercise Rehabilitation Coordinator, Exercise Science Researcher, Compensation & Rehabilitation Officer, Exercise Rehabilitator, Workers' Compensation Officer, Health Care Officer, Occupational Rehabilitation Officer, Work Cover Services Manager



See more course information — ecu.edu.au/courses/M90



"I gained valuable skills, made lifelong friends, and now have a strong professional network."

Brendan Crosby
ECU Exercise Science and Rehabilitation graduate

Bachelor of Science (International Exercise and Sports Science)

Indicative ATAR: 70

Duration: 4 years full-time or part-time equivalent

Availability: JO ML SW OL

Full-time	■			
Part-time	■			

Secondary Location

The first two years are delivered by Edith Cowan University on the Joondalup Campus. The third year is delivered by the University of Portsmouth in the United Kingdom on-campus, and the fourth year is delivered by Edith Cowan University on-campus.

This International Dual Degree provides you with an opportunity to gain valuable international experience while receiving two degrees. Graduates will receive both a Bachelor of Science (International Exercise and Sports Science) from ECU and a BSc (Hons) Sport, Health and Exercise Sciences from the University of Portsmouth (UK).

If you are interested in health, fitness and general wellbeing, and like the idea of helping other people improve their lifestyle or sports performance through exercise, you should explore a career in Exercise Science.

Your degrees will prepare you for a variety of professional roles – you could work with elite sportspeople, promote health in the community, work in corporate health or a wide range of other exciting environments. Your studies will give you the skills to design, implement and evaluate exercise programs targeted at improving general health and wellbeing, helping to prevent or reduce the impact of chronic disease and enhancing athletic performance.



You can also specialise in a related field, with majors in Football Performance, Health Promotion, Nutrition, Occupational Safety and Health, and Sport Business, helping broaden your career prospects. You can also use this course as a pathway to further study in areas such as clinical exercise physiology, education, dietetics, and strength and conditioning coaching.

Practicum

Students are required to complete two mandatory practicum units: SPS3112 Exercise and Sports Science Practicum (140 hours), and SPS2524 Exercise Delivery (30 hours).

The Recommended Elective SPS3604 (Human Movement – Participation and Inclusion) includes 30 hours of work placement. There are attendance requirements for this practicum. Students on practicum must observe professional practice rules.

For more information, see course details on our website.

Pre-practicum Preparation

To be eligible to undertake practicum placements, students are required to complete a range of different tasks (for example, obtaining a police clearance, receiving immunisations and completing first aid training). For more information, see course details on our website.

Employment Opportunities

Graduates have successful careers in specialty areas such as exercise science, sports administration, sports coaching, strength and conditioning, corporate fitness, workplace health, sports development and sports performance analysis plus the opportunity for further study in teaching, exercise physiology and dietetics.

Non-Standard Timetable

Students who select the majors of Health Promotion, Nutrition and Occupational Safety and Health are able to study some units on campus at ECU South West. In order to complete the course, however, students should be prepared to complete the remaining units at the Joondalup Campus.

Careers

Exercise Scientist, Exercise Physiologist, Biomechanist, Personal Trainer, Sports Coach, Sport & Exercise Scientist, Researcher, Strength & Conditioning Coach, Sports Medicine Trainer

Available Majors	JO	ML	SW	OL
Football Performance	■			
Health Promotion	■		■	■
Nutrition	■		■	
Occupational Safety and Health	■		■	■
Sport Business	■			■

➔ See more course information — ecu.edu.au/courses/W97



Bachelor of Science (Exercise and Sports Science) / Bachelor of Commerce (Sport Business)

Indicative ATAR: 70

Duration:	4 years full-time or part-time equivalent			
Availability:	JO	ML	SW	OL
Full-time	■			
Part-time	■			

This double degree includes concurrent study in the disciplines of Exercise and Sports Science, and Sport Business, and is ideal for those students seeking to work in management positions within sport industries.

You can study units for this double degree on-campus, with weekly lectures and laboratories, or through a blended format that involves weekly online content, such as lectures, laboratories, tutorials and/or seminars, accompanied by timetabled, intensive on-campus laboratory sessions twice per semester.

The Exercise & Sports Science core degree equips students with the knowledge and practical skills to specialise in the design, implementation and evaluation of programs spanning from improving general health and wellbeing, to enhancing sport performance in elite athletes. The course commences with the study of the human body and focuses on the application to exercise and sport, including exercise physiology, exercise and sports psychology, biomechanics, motor learning and control, and strength and conditioning.

The Sport Business core degree equips students with the knowledge and practical skills required to function as professionals and industry leaders in contemporary sport agencies and organisations, as well as managing their own sport business. The course commences with an introduction to the sport industry and the application of key business principles and practices,

including accounting, marketing, business analytics, sport delivery systems, strategic and human resource management, funding and finance, legal aspects, sport venue and event management, and sport business planning.

Clinical or professional work placement

SPM1102 Sport and Recreation Leadership and Programming: students will undertake a 20-hour work placement in a not-for-profit, incorporated sport organisation/club.

SPM2104 Managing Recreation Services and Facilities: students will undertake a 25-hour work placement in a staffed recreation facility setting.

For more information, see course details on our website.

Practicum

SPS3112 Exercise and Sports Science Practicum: students are required to undertake a 140-hour work placement in an exercise and sports science related industry.

SPS2524 Exercise Delivery: students are required to undertake a 30-hour internal practicum.

Pre-practicum Preparation

To be eligible to undertake practicum placements, students are required to complete a range of different tasks (for example, obtaining a police clearance, receiving immunisations and completing first aid training). For more information, see course details on our website.

Employment Opportunities

Potential career opportunities exist for managers within a range of global sport organisations and businesses, including the diverse areas of professional sport organisations, national and state sport associations, high-performance sports centres, health and wellness case management, private exercise, fitness, sport and rehabilitation franchise operations, personal training businesses, and elite and high-performance sport organisations.

Careers

Sport Business Owner/Manager, Sport Development Officer/Manager, Corporate Fitness Director, Physical Activity Coordinator, Player Welfare Manager, High Performance Manager, Health and Wellness Case Manager, Health and Fitness Centre Leader, Sports Coaching Director



See more course information — ecu.edu.au/courses/W31

World-ranked Sports Science



Ranked 30th for Sports-Related Subjects in the 2022 QS World University Rankings.



Ranked in the top 50 in ShanghaiRanking's Global Ranking of Sport Science Schools and Departments 2022.

Bachelor of Science (Occupational Therapy)

Indicative ATAR: 80

Duration:	4 years full-time or part-time equivalent			
Availability:	JO	ML	SW	OL
Full-time	■			
Part-time	■			

Many of us take our independence for granted, comfortably performing all kinds of tasks and activities at home, school, work and in the community. For someone with an injury, illness, disability or psychosocial issues, it can be a different story.

A qualified occupational therapist (OT) can make a difference to that person's restricted lifestyle. An OT helps people of all ages to develop, sustain, or restore participation in their day-to-day activities and improve their quality of life.

If you're a good communicator and a creative thinker with an interest in science, this might be the career for you.



“The course was extremely hands-on – I had a practical placement just three weeks into the course.”

Rebecca Van Noort
ECU Occupational Therapy graduate

One of the best things about studying Occupational Therapy at ECU is starting your practical experience in your first year. At ECU, you'll gain valuable learning experiences in a range of settings and with people with differing needs through fieldwork placements all throughout the four-year course.

During your fieldwork placements, you'll integrate your growing occupational therapy knowledge, skills and professional attitudes, while being supervised and assessed by registered occupational therapists.

Admission Requirements

Applications for this course are not accepted through ECU's Experience Based Entry Scheme.

Reporting Obligations

ECU has an obligation to report details of students enrolled in this course to the Australian Health Practitioner Regulation Agency (Ahpra). See the unit set on our website for more information.

Practicum

An extended full-time practicum component applies to the three clinical science units in this course. There are attendance requirements for this practicum.

Pre-practicum Preparation

To be eligible to undertake practicum placements, students are required to complete a range of different tasks (for example, obtaining a police clearance, receiving immunisations and completing first aid training). For more information, see course details on our website.

Professional Recognition

The World Federation of Occupational Therapists (WFOT) has approved this course. The Occupational Therapy Council of Australia Limited has accredited this course.

Registration

Students will need to graduate to be eligible to register with the Occupational Therapy Board of Australia. Registration with the Occupational Therapy Board of Australia is required to practice in the profession.

Careers

Occupational Therapist, Rehabilitation Consultant, Health & Wellness Coordinator, Mental Health Clinician, Occupational Rehabilitationist, Safety Officer, Disability Worker, Neuromuscular Therapist, Hand Therapist



See more course information –
ecu.edu.au/courses/H96



Bachelor of Science (Paramedical Science)

Indicative ATAR: 70

Duration:	3 years full-time or part-time equivalent			
Availability:	JO	ML	SW	OL
Full-time	■			■
Part-time	■			■

Students are required to attend skills workshops and clinical practicums outside of the standard timetable. Skills workshops require attendance at the Joondalup Campus, and clinical practicums require attendance at partner healthcare organisations in Western Australia.

It can be the difference between life and death. A highly-trained, clear-thinking professional paramedic regularly faces life-and-death situations as a first responder. It's unpredictable. It's demanding. And it's exciting. But is it for you? Studying our Paramedicine degree will help you answer that question. Here, your studies will include many hours in work placement experiences with WA-based healthcare providers. And our realistic on-campus simulations will help you develop practical skills, like pre-hospital diagnostic techniques, that are critical in this profession.

You'll be taught by Ahpra-registered industry professionals with on-road experience, with many still actively working in the profession. They'll help you develop an understanding of professional and ethical practice, communication and safe practice within the public health, social, cultural and clinical paramedical science environments.

When you graduate, you can consider further specialisation across a range of postgraduate courses, including Critical Care Paramedicine, Extended Care Paramedicine and Disaster and Emergency Response.

Admission Requirements

Applications for this course are not accepted through ECU's Experience Based Entry Scheme.

Reporting Obligations

ECU has an obligation to report details of students enrolled in this course to the Australian Health Practitioner Regulation Agency (Ahpra). See the unit set on our website for more information.

Practicum

Students are required to undertake at least 400 hours of clinical practice placements as part of this course with partner healthcare providers in Western Australia.

Pre-practicum Preparation

To be eligible to undertake practicum placements, students are required to complete a range of different tasks (for example, obtaining a police clearance, receiving immunisations and completing first aid training). For more information, see course details on our website.

Professional Recognition

Paramedicine Board of Australia has approved this course.

Registration

Students will need to graduate to be eligible to register with the Australasian Health Practitioner Regulation Agency (Ahpra). Registration with Ahpra is required to practice in the profession. The Paramedicine Board requires completion of the Degree for Paramedic Registration.

Membership

Students can apply for membership with the Australasian College of Paramedicine. Students are eligible for student membership with the Australasian College of Paramedicine.

Employment Opportunities

This course prepares graduates to practice high-quality, evidence-based paramedicine in a wide spectrum of health and cultural settings, and to lead Australian and international paramedicine development.

Careers

Paramedic, Critical Care Paramedic, Community Paramedic, Industrial Paramedic, Ambulance Officer, Intensive Care Paramedic, Retrieval Paramedic

→ See more course information — ecu.edu.au/courses/K89



“The paramedical science course at ECU gave me the opportunities, clinical skills and confidence to handle any situation as an ambulance officer.”

Johanna Stirling
ECU Paramedical Science student

Bachelor of Speech Pathology

Indicative ATAR: 80

Duration: 4 years full-time or part-time equivalent

Availability: JO ML SW OL

Full-time ■

Part-time ■

Most of us take communication for granted, but, for people with a disorder, it's a daily challenge. Thankfully, a trained speech pathologist can make a huge difference to the quality of someone's life. Speech pathologists provide diagnostic assessment and management of disorders of communication and swallowing for people of all ages, from babies to the elderly. They work with a wide range of problems like stuttering, voice problems, language disorders and physical and intellectual disabilities.

If you are passionate about communicating, have an interest in helping people across the lifespan, this might be a career for you. Speech Pathology includes science, communication and being creative in planning therapy.

One of the best things about studying Speech Pathology at ECU is starting your practical experience in your first year. And, with our smaller student cohort and the greater personal attention you'll receive from our experienced lecturers, it's the best way to start your new career.

Admission Requirements

Applications for this course are not accepted through ECU's Experience Based Entry Scheme.

Practicum

Students are required to complete substantial clinical practicums designed to provide the required range of clinical experience. Fieldwork placements commence in the first year and throughout the course, and provide students with valuable learning experiences in a range of settings.

Pre-practicum Preparation

To be eligible to undertake practicum placements, students are required to complete a range of different tasks (for example, obtaining a police clearance, receiving immunisations and completing first aid training). For more information, see course details on our website.

Professional Recognition

Speech Pathology Australia (SPA) has accredited this course.

Membership

Graduates of this course will be eligible for Practising Membership with Speech Pathology Australia.

Employment Opportunities

Speech pathologists are employed in child development centres, schools, hospitals, private practice, disability organisations, in the performing arts, or in universities.

Careers

Speech Pathologist



See more course information —
ecu.edu.au/courses/Y02



“One of the best things about studying speech pathology at ECU is doing prac straight away, even from first year.”

Jaimee Klaassen
ECU Speech Pathology student





Postgraduate Study

The School of Medical and Health Sciences offers a wide range of postgraduate courses, allowing current students to progress their qualifications, or enabling working healthcare professionals to add a specialisation to their skillsets.

Coursework

We offer a range of postgraduate courses, at three different levels of study. To be eligible to apply for one of these courses, applicants are generally required to have either a Bachelor's degree or a minimum of five years of relevant professional experience.

Graduate Certificate

A graduate certificate is a great way to diversify your current skills and knowledge with courses of only three units. The best part is you can complete them in as little as six months of full-time study. A completed graduate certificate is a recognised pathway into many other postgraduate coursework programs, such as a Master's degree in the same discipline, providing a great opportunity to get a taste of the discipline without committing to a full two-year degree.

Graduate Diploma

Our graduate diplomas comprise six units in a particular discipline, and expand further on content studied at graduate certificate level. They generally entail one year of full-time study.

Master by Coursework

Master by coursework degrees are designed to provide a body of knowledge that includes the understanding of recent developments in the discipline and/or area of professional practice, and a knowledge of research principles and methods applicable to the field of work and/or learning. Course length varies depending on the level of your previous qualification and if that qualification is in the same discipline as the Master's course.

Research

A research degree involves the production of a written body of work that makes an original contribution to knowledge, known as a thesis. The research will be developed over a period of time and will involve identifying a topic, developing a proposal, conducting the research and producing the thesis.



Postgraduate Coursework

Graduate Certificates

Graduate Certificate of Community Paramedicine:
ecu.edu.au/courses/J82

Graduate Certificate of Critical Care Paramedicine:
ecu.edu.au/courses/J81

Graduate Certificate of Exercise Medicine (Oncology):
ecu.edu.au/courses/J96

Graduate Certificate of Exercise Science
(Strength and Conditioning):
ecu.edu.au/courses/M27

Graduate Certificate in Neurological Rehabilitation:
ecu.edu.au/courses/J92

Graduate Certificate in Occupational Health and Safety:
ecu.edu.au/courses/S72

Graduate Certificate of Occupational Hygiene:
ecu.edu.au/courses/J83

Graduate Certificate in Public Health:
ecu.edu.au/courses/W60

Graduate Diplomas

Graduate Diploma of Community Paramedicine:
ecu.edu.au/courses/J80

Graduate Diploma of Critical Care Paramedicine:
ecu.edu.au/courses/J75

Graduate Diploma of Exercise Medicine (Oncology):
ecu.edu.au/courses/J95

Graduate Diploma of Occupational Health and Safety:
ecu.edu.au/courses/S73

Graduate Diploma of Occupational Hygiene:
ecu.edu.au/courses/J74

Graduate Diploma of Public Health:
ecu.edu.au/courses/W61



Master's Degrees

Master of Business Administration (Major available in
Management of Occupational Health and Safety):
ecu.edu.au/courses/J52

Master of Critical Care Paramedicine:
ecu.edu.au/courses/J84

Master of Exercise Medicine (Oncology):
ecu.edu.au/courses/J94

Master of Exercise Science (Strength and Conditioning):
ecu.edu.au/courses/U94

Master of Medical and Health Science by Research:
ecu.edu.au/courses/J90

Master of Nutrition and Dietetics:
ecu.edu.au/courses/I49

Master of Occupational Health and Safety:
ecu.edu.au/courses/L65

Master of Occupational Hygiene and Toxicology:
ecu.edu.au/courses/I01

Master of Paramedic Practitioner:
ecu.edu.au/courses/J78

Master of Public Health:
ecu.edu.au/courses/I62

Doctorates

Doctor of Philosophy:
ecu.edu.au/courses/L61

Doctor of Philosophy (Integrated):
ecu.edu.au/courses/J42

Life as a student

It doesn't matter if you've just left high school or you haven't been a student for a few years, study at uni is a whole new world. The good news is, no matter what your study challenges, we're ready to help you succeed.

Adjusting to study whatever your situation

At ECU, we'll support you through your studies whatever your personal circumstances. This includes if you have a medical condition or disability or have responsibilities for caring for a family member in a similar situation.

It might also include ensuring you can continue to observe any cultural or religious practices.

Our Access and Inclusion team will work with you to identify reasonable adjustments to your study and uni life. They'll also provide ongoing support to you through an individual Learning Access Plan.



Adjusting to academic life

Learning at university can be a bit daunting to begin with, but we've got you covered whatever help you need.

That includes help with preparing assignments, help with researching or referencing, help with online study and loads more. You even get a peer mentor in your first semester!





Career advice and job skills

You can get support and resources to help you plan your future career, as well as find work or volunteering experience while you're a student.

This includes career-based workshops, industry events, one-to-one career advice and more.

Free counselling service

If you need to discuss any personal issues that may be affecting your ability to study, we have a free, professional and confidential psychological counselling service.

Sports and Gyms

Being physically active positively stimulates your student brain and helps you reduce the stress of assignment deadlines or exams.

So, it's a good thing that our campuses have terrific sports and gym facilities. You can also join group fitness classes, social sports teams or attend regular healthy activities like yoga classes.

Student health services

The ECU campuses in Joondalup and Mount Lawley have student health centres with doctors (GPs), and nurses to assist you if you need them. The services are covered by Medicare or Overseas Student Health Funds so most visits are free or low cost.



What pathway can you take into ECU?

If you don't have an ATAR, or you do but got a lower ATAR than expected, you still have pathway options into university courses.

For some of these pathways, you may need to have completed WACE.



Watch a short video on pathways to ECU — youtu.be/p1UUREajlNI

University Preparation courses

This is a pathway we recommend to students who didn't get an ATAR, or didn't get the ATAR they had hoped for. UniPrep courses are free too.

UniPrep is either a standard uni semester course or one of two intensive courses – UniPrep Accelerate for 4 weeks in January and UniPrep Summer from November to January.



Read more about UniPrep — ecu.edu.au/degrees/uniprep

Experience Based Entry

If you don't have an ATAR (or had a near-miss) or any VET qualifications, like a Cert IV, this could be your way into university.

You'll need to include a letter telling us about your goals and why you want to go to uni as part of your application, along with references.



Read more about Experience Based Entry — ecu.edu.au/future-students/course-entry/experience-based-entry-scheme

Diploma or Cert IV Entry

If you've completed or started a VET course at a TAFE or another training organisation since high school, you might also have a pathway to uni.

If you completed a Diploma or an Advanced Diploma you may be eligible to go straight into an undergraduate course.



To read more about all pathways — ecu.edu.au/degrees/pathways

How to apply

Application options can vary, depending upon your situation and your chosen pathway.

Australian universities have 4 standard categories that cover student applications.

These are:

- Recent secondary education (typically most school leavers)
- Work and life experience (usually mature age students who've been working)
- Vocational education and training (VET) (think TAFE students)
- Higher education student (people who've got a degree or done a bridging course)

We won't try to explain these in this space, but we suggest you visit our Applying page and see which category is your best fit.

The page also details your different entry requirements and options.

→ Everything about applying is here — ecu.edu.au/future-students/applying

If you'd rather talk to us about applying for courses, we'd love to hear from you. Call 134 328 or drop into your nearest ECU campus.



Become an ECU student in 6 steps

- 1 Choose your course.**
Consider having a back-up course in case you've applied for a popular course, and it's oversubscribed. You can apply for up to 3 courses at once.
- 2 Check entry requirements.**
Some courses have special admission or 'inherent' requirements so check these too.
- 3 Check the application date.**
Don't miss the deadline for your chosen course/s.
- 4 Apply for a scholarship.**
These are awarded to all kinds of people, not just high achievers. You can do this when you apply for a course.
- 5 Have your paperwork ready.**
You'll need scanned copies of other qualifications, your résumé or other required paperwork ready to upload.
- 6 Accept your offer.**
If you're successful, we'll send you an offer of a place. We hope you accept it and become an ECU student!

Every effort has been made to ensure that the information in this publication is correct at the time of production. The information is subject to change from time to time and the University requests the right to add, vary or discontinue courses and impose limitations on enrolment in any course. The publication constitutes an expression of interest and is not to be taken as a firm offer or understanding. This publication is intended for Australian citizens and permanent residents only. Some information contained in this publication may not be applicable to international students.

GREENING ECU: Edith Cowan University is committed to reducing the environmental impact associated with its operations by conducting its activities in a socially and environmentally responsible manner. This includes implementing strategies and technologies that minimise waste of resources and demonstrate environmentally sensitive development, innovation and continuous improvement.




Unlock your superpower.



**Creative thinkers
made here.**


CRICOS Provider No. 00279B | RTO Code 4756
TEQSA ID PRV12160, Australian University

Contact

 +61 8 6304 0000
(For calls outside Australia)


 ECU.EDU.AU

Find us at


 [ecujourney](https://www.facebook.com/ecujourney)

 [edithcowanuni](https://twitter.com/edithcowanuni)

 [edithcowanuniversity](https://www.youtube.com/edithcowanuniversity)

 [edithcowanuniversity](https://www.instagram.com/edithcowanuniversity)

 [edithcowanuni](https://www.tiktok.com/edithcowanuni)

 [school/edith-cowan-university](https://www.linkedin.com/school/edith-cowan-university)