

Behind the Scenes Sculpture by the Sea, Cottesloe | 2021

Ayad ALQARAGHOLLI | Denise PEPPER | Kate HULETT
| Jennifer COCHRANE | Jina LEE | Johannes PANNEKOEK
| MJ + J STUDIO (Tony JONES, Ben JONES & Angela McHARRIE)
| Tuinna BLACKIE

The behind the scenes process for creative work is an often unseen but valuable part of making. This exhibition celebrates the process involved in getting artworks exhibition ready, from conceptual starting point, to site preparation, engineering specifications, structural development and artwork realisation. In bringing these details to the forefront, this exhibition showcases these artists' tremendous skill and diverse approaches to their practice.

Spectrum Project Space

Opening: 6 May 2021 5pm - 7pm

Exhibition dates: 4 - 20 May 2021

Gallery opening hours: Tuesday to Friday 10am - 4pm

Building 3, 2 Bradford St, Mount Lawley

sculpture
by the sea

ECU Galleries



Exhibition statement:

This exhibition consists of video, photographic documentation and prototypical works created as experiments, and some final sculptures produced by seven artists and one artist collective who exhibited in Sculpture by the Sea, Cottesloe 2021.

The behind-the-scenes works are valid as artworks in their own right. They offer the opportunity to observe the multitude of methods that artists employ in their practice.

This is an opportunity to show the multiple levels of engagement in the arts and the background work that goes into the production of significant pieces.

Exhibiting artists:

1 MJ + J STUDIO (Tony JONES, Ben JONES & Angela McHARRIE)



Statement

Lite House acts as a beacon and marker. It illuminates and engages with the surrounding constellation of lights above and below the horizon. The perforated sheets and LED lights sparkle and glow after sundown.

Biography

MJ+J Studio is a collaboration between artists Tony Jones OAM, Ben Jones and Angela McHarrie. They have worked together for over ten years on an extensive portfolio of commissions and are also

individually represented in major public and private collections.

2 Jina LEE



Statement

This work is inspired by the traditional Korean lucky pouch 'Bokjumeoni'. In the past year we have faced unparalleled struggles and I hope that this gift can bring good luck for all of us.

Biography

Jina Lee completed her Master of Fine Arts, majoring in Stone Sculpture, at Kookmin University, South Korea in 2009. Recipient of the Clitheroe Foundation Emerging Artist Mentorship SxS Bondi 2015 and Rio Tinto

WA Emerging Sculptor Mentorship at SxS Cottesloe 2018. Represented in public collections in Australia, Japan, Italy, Albania and South Korea including the City of Melville; Province of Udine, Italy and the Ritz Carlton Hotel, Perth. SxS Bondi 2015, SxS Cottesloe 6 times since 2015. Helen Lempriere Scholarship SxS Bondi 2020.

3 Denise PEPPER



Statement

Staying home has seen a resurgence in home baking. I pay tribute to the variety of pressed tin and copper vintage molded cake tins originally used in the making of homemade treats, and to the generations who baked from scratch.

Biography

BVA ECU 2006. Recipient Ranamok Glass Prize 2012, City of Bayswater Sculpture Award 2016 - 17, WA Sculptor Scholarship SxS Cottesloe 2017 and Kids' Choice Award SxS Cottesloe 2018. Represented

in private collections in Australia and New York. SxS Bondi 2017, 2019. SxS Cottesloe 7 times since 2009.

4 Johannes PANNEKOEK



Statement

The earth's ecosystem has valiantly coped with and even overcome stresses from human activities for millennia. Today we are stressing our collective climate and creating feedback loops that push ecosystems to a point of no return.

The urgency around limiting global warming to well below 2.0 C is to avoid reaching these irreversible tipping points. The "Feedback Loops" that are pushing our ecosystems out of balance are abstractly

represented by the stainless-steel form while the Corten steel cube itself delicately balanced one of its corners, represents human activity.

The artist used 1.2 tonnes of steel which together with the energy used to fabricate the work produced 2.5 tonnes of Carbon Dioxide...all of which was offset with carbon credits.

Biography

Recipient Aqualand Sculpture Award SxS Bondi 2016 and Mindarie Marina Boardwalk Sculpture Prize 2008. Represented in public and private collections including Sydney Harbour Federation Trust, Georges Heights, Sydney and Crown Towers, Perth. SxS Bondi 2016 – 2017. SxS Cottesloe 8 times since 2009.

5 Ayad ALQARAGHOLLI



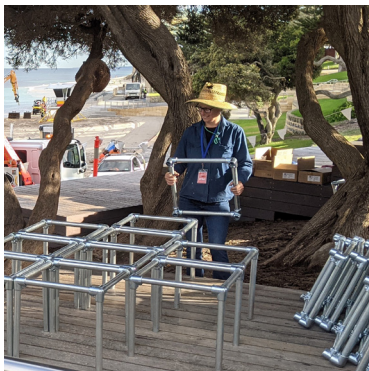
Statement

The Obelisk shows two faces balancing on bookshelves created from clay then cast in bronze. As a child I visited Lagash, an ancient city in south Iraq. This is where thousands of clay tablets with Cuneiform writing are located next to Prince Gudea palace. This is the first library in human history. The Obelisk is a contemporary representation of love, peace and freedom.

Biography

BA Curtin University in 2011. Represented in collections including Iraq Museum for Modern Art, National Museum, of Modern Art Amman, Holmes à Court, Town of Cottesloe and Qingdao International Lan Bay Art Park. SxS Bondi 2011. Joins the SxS Cottesloe Decade Club this year.

6 Jennifer COCHRANE



Statement

This work begins with a pile of pipes and a pile of fittings and slowly comes together on site as cubes are assembled. A site-specific installation is created through the replication of the cube form resulting in a unique convergence - the hard edge geometry of the cubes and the organic flowing forms of the trees.

Biography

Jennifer Cochrane completes a BFA at Curtin University in 1988 and has exhibited her work nationally and internationally over the last 25 years. Represented in public and private collections. Numerous commissions include Walcliffe House, Margaret River; Harvest Lakes Estate, Perth; the City of Mandurah Council Chambers; Parliament House, Western Australia; ANZAC Park, Mount Hawthorn; and the Pilbara Police and Community Justice Services Complex, Karratha. *Sculpture by the Sea, Albany* 1998; *SxS Aarhus* 2003. *Sculpture by the Sea, Bondi* 7 times since 2005. *Sculpture by the Sea, Cottesloe* 11 times since 2005.

7 Tuinna BLACKIE



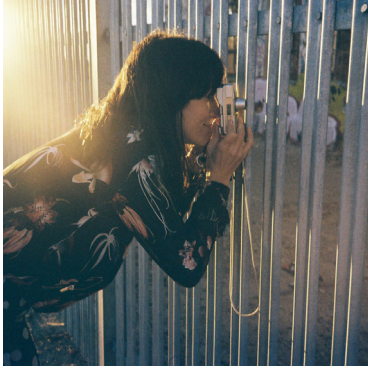
Statement

My interpretation of the iconic 'Tree of Life' is something that says Western Australia in the wet season.

Biography

An artist that loves working with stainless steel and is always up for a challenge. Owner and welder at Choice Stainless Steel. A Kiwi with a flair for the different.

8 Kate HULETT



Statement

A follow-up to Hulett's 2020 sculpture *Lost at Sea*, this is a series of images taken at fictional 'bus stops' along most of the 50km journey of the Western Australian coastline from Ocean Reef to Coogee.

Biography

Artist and photographer interested in the surprising amongst the mundane. With a deep curiosity about people, humanity and the frivolity of life, her works often feature irony and humor to soften and connect with the viewer. Shortlisted PCP CLIP Award 2018; winner of PCP IRIS Award 2019. Exhibited in Rotterdam, Sydney and Perth. SxS Cottesloe 2020.

All photographs and videos featured in this exhibiton are courtesy of the artists and Sam Bloor, Louise Coghill, Richard Watson and Jessica Wyld.