



# CENTRE FOR RESEARCH IN AGED CARE

---

ANNUAL REPORT 2021

Centre for Research  
in Aged Care  
STRATEGIC RESEARCH CENTRE



# CONTENTS

---

<b>Welcome Message</b>	<b>3</b>
<b>Strategic Directions For Research 2021-2023</b>	<b>4</b>
<b>Our Leadership Team</b>	<b>5</b>
<b>Our Members</b>	<b>7</b>
<b>Our Research Assistants</b>	<b>11</b>
<b>Research In The Media</b>	<b>12</b>
<b>Current Projects</b>	<b>13</b>
<b>Featured Projects</b>	<b>14</b>
<b>Our Students 2021</b>	<b>17</b>
<b>Publications 2021</b>	<b>18</b>
<b>Books And Chapters</b>	<b>19</b>
<b>Grants</b>	<b>19</b>

# WELCOME MESSAGE



Centre Director, Professor Davina Porock and Co-Director, Associate Professor Mandy Stanley

Welcome to the first Centre for Research in Aged Care Annual Report. This report provides an overview of research activity within the Centre, capturing highlights and achievements throughout 2021.

A society is measured by how it cares for its older citizens. Aged Care is under serious scrutiny, with the impact of COVID-19 and the Royal Commission into Aged Care Quality and Safety demonstrating significant discrimination and failures in the systems currently responsible for the support of older people. Relevant co-designed research that informs policy and impacts practice through translation could not be more needed.

The vision for the Centre is to bring positive change to the quality of living and dying for older people receiving aged or end-of-life care. We aim to inform policy and positively impact practice with innovations that improve the quality of aged and end-of-life care at home, in residential care, and in hospital. Success in this transformation relies on a collaborative approach to developing and testing innovations with those people who will be providing or receiving care. Our Aged Care research responds directly to the contemporary global ageing challenge, and the Centre is clearly aligned with international, national, and local research priorities.

The Centre brings together researchers from Australia and internationally, who share a passion for improving the experience of older people receiving care, and the systems that support aged and end-of-life-care access and provision.

We offer mentorship and opportunities for higher degree students, and we are committed to working with older people, caregivers and providers to co-design innovations and systems to improve care, services and systems.

We would like to congratulate everyone on their achievements in 2021 and extend thanks and acknowledgement to our clinical partners and industry stakeholders. We commend this report to you, and encourage you to engage with us to discuss research opportunities and collaborations.

***Professor Davina Porock***

Director, Centre for Research in Aged Care



# STRATEGIC DIRECTIONS FOR RESEARCH 2021-2023

## OUR PURPOSE

To inform policy and positively impact practice with innovations that improve the quality of aged and end-of-life care at home, in residential care and in hospital.

## OUR VISION

To bring positive change to the quality of living and dying for older people receiving aged or end-of-life care.



## OUR STRATEGIES

- **Support Centre-wide projects** – projects that drive the overall centre agenda such as developing research priorities for aged care in WA through consensus building, or providing access to the innovative re-analysis of the Royal Commission data
- **Support individual members' research programmes** – small grants funding, open access funds, peer review opportunities
- **Support researcher development** – seminar series, methods seminars, writing retreats, grant writing support, publication reviews, mentorship
- **Build the aged care researcher pipeline** – creating and developing a community of practice for aged and end-of-life research through mentorship support, peer-review, presentation opportunities and social engagement from Masters and PhD students, through early- and mid-career researchers as well as seasoned senior researchers

Our research team has the capacity to undertake research across a variety of areas. Our key themes include:

### Innovations utilising the power of big data

- Analysing whole population linked datasets relevant to health and aged care
- Modelling to inform system transformation and policy
- Developing methodologies for secondary analysis of large qualitative data sets

### Innovations in care

- Developing, testing and translating innovations that improve the experience and outcomes of older people receiving aged and end-of-life care
- Developing a prioritised Aged Care research agenda in partnership with stakeholders using a Delphi technique

### Innovations in smart technologies

- Developing, testing and commercialising technologies and products that promote
- independence for older people receiving aged and end-of-life care



# OUR LEADERSHIP TEAM

## Director, Professor Davina Porock

Davina completed her PhD in Nursing at Edith Cowan University in 1998. She worked in nursing research and education in the USA and UK before returning to Perth in 2019. Davina holds a VC Professorial Research Fellowship in the School of Nursing and Midwifery.

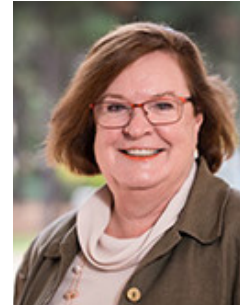


### Research Interests

- Person-centred care
- End-of-life care
- Recognising dying
- Transition to end-of-life care
- Nursing theory

## Co-Director, Associate Professor Mandy Stanley

Mandy is an Associate Professor in the School of Medical and Health Science. Mandy completed her PhD at the University of South Australia in 2006 and has over 30 years' experience as an occupational therapy academic. Mandy has an international reputation as a qualitative researcher.



### Research Interests

- Well-being and participation
- Dignity of risk
- Choice and control
- Qualitative research methodologies



## Our Leadership Team (continued)

---

### Dr Janine Alan

Janine is a post-Doctoral Research Fellow and commenced with the School of Nursing and Midwifery at ECU in September 2019. Janine works with Professor Davina Porock on a research program predominantly involving the secondary analysis of data from large administrative health and ageing data collections. Her research focus is the care of older people living in residential aged care facilities.



#### Research Interests

- Safety and quality in residential aged care facilities
- Whole-population public health and health services research using linked administrative data sources
- Transition to end-of-life care
- Medication use

### Dr Trish Cain

Trish is a post-Doctoral Research Fellow working with Professor Porock on a research program focused on secondary qualitative analysis of evidence from the Australian Royal Commission into aged care quality and Safety. Trish completed her PhD at Murdoch University in 2019. With a background in social psychology, her research focuses on the lived experience of people from marginalised groups.



#### Research Interests

- How discourse shapes lived experience for marginalised groups
- Bullying and discrimination in the workplace
- The quantification of attitudes and critical appraisal of psychometric measures
- Nursing theory

### Associate Professor Rosemary Saunders

Rosemary is an Associate Professor in the School of Nursing and Midwifery, and a Research Fellow at Hollywood Private Hospital. Rosemary completed her PhD in nursing at the University of Sydney in 2018.



#### Research Interests

- Older adult care
- Stroke care
- Volunteers in healthcare
- Safety and quality
- End-of-life care
- Frailty



# OUR MEMBERS

## Dr Ma'en Zaid Abu-Qamar

Ma'en is a Lecturer and Unit Coordinator, School of Nursing and Midwifery and completed his PhD in Nursing at the University of Adelaide in 2007. Ma'en has employed a range of research methodologies with special interest in systematic reviews investigating foot ulcer and generating evidence to inform teaching.

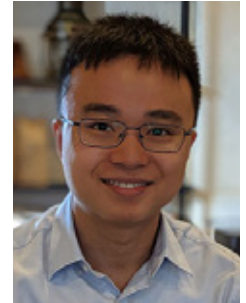


### Research Interests

- Diabetes care
- Burns care
- Evidence-based nursing
- Complementary therapies
- Nursing education

## Dr Seng Giap Marcus Ang

Marcus joined ECU as a nursing lecturer in January 2020. He completed his PhD with the University of Newcastle in 2020. Marcus is currently investigating the impact of carers' fall concern on the risk of falling among older people and how it would affect fall prevention efforts at home.



### Research Interests

- Falls and fall prevention
- Fear of falling
- Older people
- Home carers

## Dr Melanie Baker

Melanie is an academic and an Early Career Researcher in the School of Nursing and Midwifery at Edith Cowan University. Her areas of expertise include: care of the older adult, palliative care; law and ethics in nursing; and the application of evidence based practice, clinical policy and procedure. Melanie completed her PhD through a joint agreement with Murdoch University and ECU in 2020.



### Research Interests

- Evidence-based practice in healthcare
- Clinical implementation of policy and procedure
- Older person and community health

## Dr Linda Coventry

Linda is a Senior Research Fellow within the School of Nursing and Midwifery, and has an Adjunct Research Fellow position with the Centre for Nursing Research at Sir Charles Gairdner Hospital. Linda completed her PhD in 2016 at the University of Western Australia.



### Research Interests

- Vascular access Pressure injury
- Improving patient outcomes in acute care settings
- Prevention of hospital acquired complications
- Translation of evidence-based practice and implementation science

## Our Members (continued)

### Dr Kate Crookes

Kate is a postdoctoral research fellow in the School of Nursing and Midwifery. Kate completed her PhD at the Australian National University and has previously held postdoctoral research positions at the University of Hong Kong and the University of Western Australia.

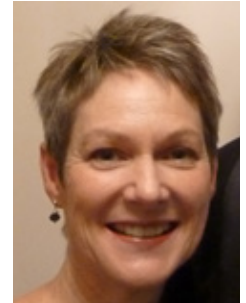


#### Research Interests

- Frailty
- Volunteer support for older adults
- Face recognition

### Dr Julie Dare

Julie is a Senior Lecturer and Researcher in the School of Medical and Health Sciences and completed her PhD in 2010 at ECU. She has expertise in qualitative and mixed-methods research design, and a specific interest in enhancing older adults' health and wellbeing through activities that promote social engagement.

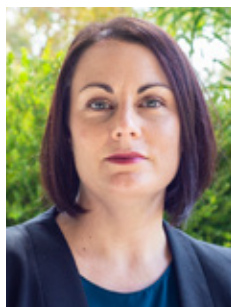


#### Research Interests

- Older people, social engagement and health
- Women' health
- Social context to older people's alcohol use
- Social support and health

### Dr Olivia Gallagher

Olivia is the Associate Dean (Clinical) in the School of Nursing and Midwifery, supporting the Executive Dean and the Executive Team in providing strategic and operational leadership for the core activities of a School. Olivia completed her PhD at the University of Sydney in 2016.



#### Research Interests

- Older adult care
- Nursing education
- Simulation learning
- Breast cancer survivorship
- Patient decision-making
- Workforce

### Dr Eyal Gringart

Eyal is a Senior Lecturer, Coordinator of Psychology, International Programs; Co-Coordinator undergraduate psychology programs within the School of Arts and Humanities. Dr Gringart is a social psychologist in orientation completed his PhD at ECU in 2003. He is an active researcher who is versed in both quantitative and qualitative research methodologies.



#### Research Interests

- Human rights and social justice
- Death and dying
- The aging workforce
- Attitude and stereotype-based behaviour change
- Intimate civility
- Human sexuality



## Our Members (continued)

---

### Dr Aisling Heavey

Aisling is an adjunct senior lecturer with the School of Nursing and Midwifery, ECU and registered nurse with a PhD in Biomedical Sciences from University College Dublin in 2015. Aisling's research centres around marrying biological processes with improved health outcomes, namely in relation to sleep.

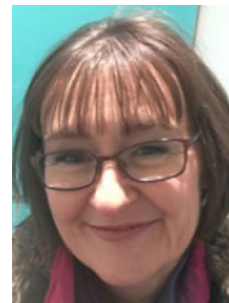


#### Research Interests

- The role of sleep in:
  - informal caregiving,
  - residential aged care facilities,
  - diabetes management
  - pregnancy.

### Dr Yvonne Middlewick

In early 2020 Yvonne relocated from the United Kingdom to join the School of Nursing and Midwifery at ECU. Yvonne recently completed her PhD investigating the lived experiences of the journey to menopause. This research was centred around improving the lives of older adults, with particular attention to women's health.



#### Research Interests

- Diabetes care
- Burns care
- Evidence-based nursing
- Complementary therapies
- Nursing education

### Dr Irene Ngune

Dr Irene Ngune is an experienced academic and a credentialed mental health nurse with over 15 years of experience as a Mental Health Nurse. She has shaped mental health education through her involvement in mental health research and curriculum development. Dr Ngune completed her PhD in 2016 at Curtin University, Australia, and is a fellow with the UK Higher Education Academy.



#### Research Interests

- The impact of life-limiting conditions on mental health
- Mental health services
- Self injury
- Mental health education

### Professor Beverly O'Connell

Beverly has held many senior roles in academia and research, including Professor and Dean of the Faculty of Nursing at the University of Manitoba Canada, and Associate Dean at Deakin University. Beverly has more than 25 years experience teaching and researching in the areas of aged care, continence care, risk management, and carer needs.



#### Research Interests

- Care of the older person
- Quality and risk management in health and aged care
- Carer needs and wellbeing

## Our Members (continued)

### Associate Professor Annette Raynor

Annette is an Associate Professor in Exercise and Sports Science, specialising in Motor Learning and Control, based in the School of Medical and Health Sciences. Annette completed her PhD at the University of Western Australia in 1994 and her areas of interest include the enhancement of social and physical wellbeing of older adults through exercise.



#### Research Interests

- Enhancing function and well-being through exercise in aged care
- Improving motor performance in children with developmental coordination disorder
- Talent identification and forecasting
- Expertise in decision-making

### Dr Mandy Towell-Barnard

Mandy is Director, Post Graduate Studies and Course Coordinator of the Master of Nursing (Graduate Entry) in the School of Nursing and Midwifery, and an Adjunct Research Fellow in the Centre for Nursing Research at Sir Charles Gairdner Hospital.



#### Research Interests

- Management of people with diabetes
- Management of people with diabetes and cognitive impairment in the acute care setting
- Violence and aggression
- Morbid obesity

### Dr Caroline Vafeas

Caroline is Director, Undergraduate Studies with the School of Nursing and Midwifery. Caroline worked as a District Nurse for 14 years before making the move to teaching and research at the University of Brighton in the UK in 2001. Caroline completed her PhD at Edith Cowan University in 2013.



#### Research Interests

- Dementia
- Older adults and aged care
- Nurse migration
- Mentoring undergraduate students

## ADJUNCT APPOINTMENTS

Adjunct appointments are made in recognition of important relationships with clinicians, policy makers and researchers.

**Adjunct Senior Lecturer  
Bridget Laging**

---

**Adjunct Senior Lecturer  
Julianne Hilbers**

---

**Adjunct Lecturer  
Christopher Young**

---

**Adjunct Senior Lecturer  
Jennifer Grieve**

# OUR RESEARCH ASSISTANTS

## Peldon Chejor

Pelden has Bachelor of Pharmacy from India and completed his Master of Public Health at ECU in 2020. He worked in the Ministry of Health in Bhutan before his journey to Perth. Pelden is currently a PhD student within the School of Nursing and Midwifery researching experiences of dementia among older immigrants living with dementia and their carers in Australia.

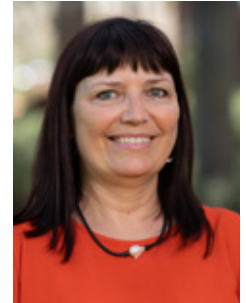


### Research Interests

- Dementia experiences
- Public health

## Laura Emery

Laura completed a Masters of Medical Science by Research through the University of Western Australia in 2013. Laura has been supporting Dr Caroline Vafeas on the CCTV use in Residential Aged Care Facilities study. Laura has extensive experience with project support, including data collection and analysis as well as communication and networking.



### Research Interests

- Improving quality of life for the elderly
- Aging with dignity
- Breast cancer research
- Better consumer focussed communication

## Minh Nguyen

Minh is a current PhD student in the final stages of completing her research. Her PhD employed an ethnographic methodology that explores the health beliefs, health behaviours, and perceived support needs among older Vietnam-born people living with chronic disease in Australia.



Minh is skilled in working with older people, family, and ethnic communities of culturally and linguistically diverse backgrounds and facilitating participant recruitment.

### Research Interests

- Theories and theory application in nursing research
- Culture and its role in chronic disease self-management
- Culturally congruent care
- Health literacy (especially among older people from CaLD backgrounds)

## Dr Karla Seaman

Karla is a Senior Research Assistant in the School of Nursing and Midwifery. She completed her PhD at Notre Dame University in 2019 and brings a wide range of perspectives as a health professional (community pharmacist), industry expert (aged care) and as a researcher.



Karla's research focuses on translational research through informing evidence-based service delivery, increasing work capacity and innovative use of e-information systems, with a particular focus on older adults and aged care.

### Research Interests

- Supporting older adults in residential aged care through evidence based practice
- Utilising electronic administration record in aged care to improve care quality and safety
- Quality use of medication in aged care
- Translational research
- Health service utilisation and healthcare policy



# RESEARCH IN THE MEDIA

## OUR MEMBERS

### *ABC Mornings (Radio)*

#### **Why do residents in residential aged care need clinical care?**

Our director **Professor Davina Porock** explained in this interview with Nadia Mitsopoulos, about the complex health and care needs of our vulnerable older citizens living in residential aged care.

### *The Conversation (Online)*

#### **We all hope for a 'good death' but many aged care residents are denied proper end-of-life care**

In this Conversation article, Centre Director, **Professor Davina Porock** discussed how for residents of aged care facilities, end-of-life care options are woefully inadequate. Addressing this issue requires not only increasing palliative care services available, but open conversations about planning for end-of-life.

### *The Senior (Online)*

#### **Delphi Survey: Setting research priorities for aged care**

Centre Director **Professor Davina Porock**, together with Associate **Professor Mandy Stanley**, featured in The Senior newspaper online, endeavouring to seek the opinions of older people, family and informal carers, aged care workers, aged care providers, and researchers investigating the topic of aged care. Determining the most important research topics and relevant questions for improving aged care in Western Australia will enable the Centre to create a set of research priorities to guide future research for the Centre, and in turn positively impact aged care service and practice.

### *Australian Seniors News (Online)*

#### **Study finds end-of-life care must be hospital led**

Research at Western Australia's Hollywood Private Hospital is contributing to perspectives on how end-of-life care is provided in Australia. In this interview, executive team member, Associate **Professor Rosemary Saunders**, said the study showed how hospitals need to take the lead in ensuring end-of-life care processes are embedded across all clinical areas.

## OUR STUDENTS

### *Aged Care Insite (Online)*

#### **Culture shock: Challenges for migrants in their end-of-life**

PhD student Gertrude Phiri shared preliminary findings of her PhD study in an article with Aged Care Insite, highlighting the need for more culturally appropriate care in the Australian Aged Care system. With African communities growing in Australia, Gertrude decided to undertake a PhD at Edith Cowan University, looking at how these migrants are preparing for their end-of-life in Australia, and how our aged care system can better meet their cultural needs. Gertrude is looking to expand this research into a larger study in the context of better care for African Australians.

### *Medical Xpress (Online)*

#### **Older people reluctant to seek help for mental health concerns**

PhD student, Claire Adams, shared results of her investigations around help-seeking intentions for mental health services by older Western Australians living with chronic conditions such as cardiovascular disease, respiratory disease including asthma, and Type 2 diabetes. The study involved 108 people aged 65 years and older living with chronic disease. Participants were asked about their attitudes and beliefs towards seeking help for mental health concerns, and information on their past engagement with mental health services, quality of life, physical and mental health.

# CURRENT PROJECTS

---

**Identifying chemical restraint risk for people with dementia from Royal Commission case studies**

---

**Emergency department transfers from residential aged care: Analysing the evidence from the Royal Commission**

---

**Managing risk and rights in aged care: Qualitative analysis of Royal Commission data**

---

**Maintaining Pride: LGBTIQ+ voices from the Royal Commission**

---

**Exploring the experiences of Dementia care for people from Culturally and linguistically diverse backgrounds as reported in the Royal Commission**

---

**Sleep in residential aged care: Exploring the practices of sleep as discussed in the Royal Commission evidence**



# FEATURED PROJECTS

## REVISITING THE ROYAL COMMISSION INTO AGED CARE QUALITY AND SAFETY

Investigators: **Professor Davina Porock, Dr Janine Alan, Associate Professor Mandy Stanley, Dr Trish Cain and Associate Professor Rosemary Saunders.**

On 8 October 2018, the Australian Governor General established a national Royal Commission into Aged Care Quality and Safety. The Royal Commission attracted over 10,000 written submissions and nearly 7,000 phone calls as verbal submissions. The Commission's Final Report is replete with terms such as "cruel", "unkind", "uncaring", "harmful", "inhumane", and "woefully inadequate".

The purpose of this current qualitative study is to undertake a secondary analysis of the data collected during the Royal Commission, for three reasons. First, a desire to maximise the utility of the data, which is unparalleled in Australia insofar as the involvement of participant groups and the personal, detailed accounts they provided about the key issues affecting Australia's aged care industry. Second, recognition that differences

in analytic choice can affect results, meaning the analytical approach used in this study might lead to new and worthwhile knowledge that extends upon the Royal Commission's findings. Third, the Royal Commission's discourse has touched only lightly on some aspects of their own investigative transparency and for this reason warrants further independent analysis.

The study is approved to link together a number of smaller projects under a single, common organisational and thematic umbrella that uses the same Royal Commission data to identify, describe, and inform the reform agenda about quality and safety issues in Australian residential aged care.

The Royal Commission data is rich with stories and varied topics related to aged care in all settings.





### **ESTABLISHING PRIORITIES FOR AGED CARE RESEARCH: A DELPHI SURVEY OF OLDER PEOPLE, CARE WORKERS, SERVICE PROVIDERS, AND ACADEMICS**

Investigators: **Associate Professor Mandy Stanley, Professor Davina Porock, Dr Trish Cain, Associate Professor Annette Raynor, Associate Professor Rosemary Saunders, Helen Myers.**

This project aims to establish research priorities for the Centre for Aged Care Research. “As an emerging centre it is important for us to direct our attention and resources to the areas that matter most to people with a vested interest in aged care,” said project lead, Associate Professor Mandy Stanley.

A Delphi study is used to engage a range of experts and experts by experience in order to develop a list of high priority research topics. Delphi studies are based on the idea that “two heads are better than one” when seeking opinion. They are commonly used in the health sciences to manage opinions from multiple sources, to solve problems, and reach consensus.

This study has been circulated electronically to over 250 residential and home care facilities and related aged care organisations. In addition, to include the perspective of people who conduct research, the survey has also been distributed to over 70 West Australian academics with research interests in aged care and has been publicised to the public.

#### **Initial Findings**

Associate Professor Stanley said, “A Delphi study is conducted in several stages. First, we asked participants to generate ideas for research that were important to them, and people responded with almost 100 ideas.

After collating the ideas, we went back to participants and asked people to rate and rank the most important research topics. The survey is still open for response. Depending on the outcome, we may need to return to participants a third time in order to reach consensus.”

In addition to the online version of the Delphi the Centre is also conducting face to face priority setting research with people from culturally and linguistically diverse backgrounds, and people with dementia and their family members. “These groups are not excluded from our current online version. However, we anticipate we may be able to engage specifically with these groups at a deeper level face to face,” said Associate Professor Stanley.

Once research priorities are established, the Centre has the opportunity to partner with stakeholder groups and develop research protocols for specific studies. “With established co-created research priorities, we will be well positioned to apply for grants and fellowships at a State and Federal level. Research focused on priority areas is likely to improve translation of research findings and positively impact aged care service and practice,” added Associate Professor Stanley.



## Featured Projects (continued)



### **SLEEP IN THE RESIDENTIAL AGED CARE SETTING**

Investigators: **Dr Aisling Heavey, Dr Trish Cain, Professor Caroline Bulsara**

Sleep is not a passive process. Rather it is a fundamental active process which repairs, restores, and rejuvenates every cell, tissue, and organ within the body. Sub-optimal sleep quality and/or quantity has been linked with development and progression of many chronic conditions including cardiovascular disease, type 2 diabetes, dementia, and psychological distress.

Changes in sleep are common with ageing and sleep disturbances are omnipresent. These changes are largely due to altered day/night rhythms and decreasing levels of the sleep promoting hormone, melatonin. However, for older adults living in Residential Aged Care Facilities (RACF), sleep disruption may be further compounded by factors such as continence, light, noise, provision of care, low levels of physical activity and daytime napping.

Ongoing poor-quality sleep is associated with myriad potential negative outcomes in older adults including increased injury and falls risk, decreased quality of life, and increased overall mortality. In those with a dementia, poor sleep can amplify behavioural disturbances, symptoms of psychological distress and hasten cognitive decline. Many of the causal factors related to disrupted sleep can be managed non-pharmacologically, however there remains a paucity of research literature detailing what are the prominent sleep disruption factors

in Australian RACFs and, importantly, the knowledge and attitudes of the healthcare professionals responsible for regulating the sleep environment. These things together create a culture that can either promote or inhibit sleep.

To gain a broad understanding of sleep practices in aged care, this study aims to explore the experiences and practice of sleep as discussed in the Royal Commission evidence. We approach this big qualitative data set using keywords to identify a body of instances that reflect sleep practices within RACF and aged care. Thus far we have found that sleep was not a prominent topic with respect to quality and safety. However, stories reveal a mismatch between the routinisation of care in RACF and individuals' needs and preferences. Mistimed overnight care was frequently cited as disrupting residents sleep. Furthermore, overnight staff shortages meant that residents individual preferences in regards to their sleep routines and preferences were not being met. Family members providing evidence were clearly frustrated by the rigidity of life in RACF and the overuse of sedating medication making continued interaction and engagement difficult. The Royal Commission evidence provides valuable insights and recommendations for practice change.

# OUR STUDENTS 2021

## HIGHER DEGREE BY RESEARCH – PHD STUDENTS

Student	Supervisors	Thesis Title
Afia Sarpong	Amanda Barnard (P) Diana Arabiat (A)	Impact of missed nursing care: A Western Australian study
Gertrude Phiri	Davina Porock (P) Caroline Vafeas (A)	Preparing for end-of-life in a new country: A Grounded theory study on African migrants living in Australia
Geya George	Davina Porock (P) Caroline Vafeas (A)	Role of the nurse in the transition from curative to palliative care in advanced cancer: A theory synthesis
Jerric Jose	Caroline Vafeas (P) Elisabeth Jacob (A)	Assessing the adequacy perceived by the nurses working in sub-acute wards on dementia care training provided to them
Joyce Muge	Caroline Vafeas (P) Lisa Whitehead (A)	Experiences of caregivers' around the final decision-making process of transferring an older adult living with dementia to long-term residential care: A grounded theory study.
Julia Kimani	Davina Porock (P) Ma'en Abu-Qamar	Pain assessment in dementia in residential aged care
Kathleen McCauley	Beverly O'Connell (P) Olivia Gallagher (CoP)	What are the experiences of older people and associated carers receiving home care package services
Lisa Devlin	Caroline Vafeas (P) Christine Duffield (A)	Career aspirations of assistants in nursing working in the aged care setting
Margaret Adejumo	Davina Porock (P) Kim Oliver (Adj)	Improving client outcomes related to standard precautions by developing collaborative practice between family carers, support workers and registered nurses
Minh Nguyen	Lisa Whitehead (P) Rosemary Saunders (A)	Cultural beliefs, health seeking behaviours and perceived health needs among Vietnam-born older Australians living with chronic diseases in Western Australia
Pelden Chejor	Davina Porock (P) Dr Trish Cain (A) Dr Bridget Laging (A)	Experiences of older immigrants living with dementia and their carers
Phuntsho Om	Lisa Whitehead (P) Amanda Barnard (A) Caroline Vafeas (A)	The experience of previously homeless older adults relocated to a residential aged care facility in Bhutan: A narrative inquiry
Sibi Roy	Olivia Gallagher (P) Rosemary Saunders (A)	A better management of deteriorating patients in a subacute specialist rehabilitation hospital – a mixed methods study
Stacey Scott	Annette Raynor (P) Julie Dare (A) Leesa Costello (A)	An investigation into how physical activity can enrich the lives of older adults during the transition process from independent living to residential aged care
Violet Platt	Davina Porock (P) Mandy Stanley (A)	The social care workforce culture of care for homeless people who require palliative care: a focused ethnography.

## HIGHER DEGREE BY RESEARCH – MASTER BY RESEARCH STUDENTS

Student	Supervisors	Thesis Title
Emma Ritchie	Clare Davison (P) Davina Porock (A)	Transcendent moments in birthing and dying: Exploring and describing the practices of midwives and palliative care nurses
Geya George	Davina Porock (P) Deborah Kirk (A)	The role of the nurse in the transition from curative to palliative care in advanced cancer: A theory synthesis
Harpreet Kaur	Irene Ngune (P) Davina Porock (CoP)	Exploring mental wellness among Indian migrants in Western Australia: A focused ethnographic study
Sushma Bhandari Kunwar	Rosemary Saunders (CoP) Caroline Vafeas (P)	End-of-life care in residential aged care: The perception of bereaved family members



# PUBLICATIONS

## 2021

We are pleased to report 100% of research articles accepted in 2021 were published in journals ranked in the first and second quartiles as ranked by the Scimago Journal and Country Rankings.

Almutairi, H., Stafford, A., Etherton-Beer, C., Flicker, L., **Saunders, R.** Aged care staff perceptions of an online training program for responsive behaviours of residents with dementia. *Australasian Journal on Ageing*, 2021; 1-10 <https://doi.org/10.1111/ajag.13015>

**Coventry, L.**, Hosking, J., Coral, E., Jenkins, M., Salgado Kent, C., Chan, D., Lim, W., **Twigg, D.**, Rickard, C. (2021). The Development of the Western Australian Haemodialysis Vascular Access Complexity Instrument. *Journal of Renal Care*, 2021, 1-12. <https://doi.org/10.1111/jorc.12390>

Etherton-Beer, C., Horner, B., Venturato, L., **Saunders, R.**, & Flicker, L. (2021). Development of a Toolkit to support sustainable culture change in residential aged care. *Australasian Journal on Ageing*, 40(1), 77-83. <https://doi.org/10.1111/ajag.12890>

Foxall, F., Sundin, D., **Towell-Barnard, A.**, Ewens, B., Kemp, V., Porock, D. (2021). Revealing Meaning From Story: The Application of Narrative Inquiry to Explore the Factors That Influence Decision Making in Relation to the Withdrawal of Life-Sustaining Treatment in The Intensive Care Unit. *International Journal of Qualitative Methods*, 20 (2021), 14. <https://doi.org/10.1177/16094069211028345>

Lannin, N., Clemson, L., Drummond, A., **Stanley, M.**, Churilov, L., Laver, K., O'Keefe, S., Cameron, I., Crotty, M., Usherwood, T., Andrew, N., Jolliffe, L., Cadilhac, D. (2021). Effect of occupational therapy home visit discharge planning on participation after stroke: protocol for the HOME Rehab trial. *BMJ Open*, 11(7). <https://doi.org/10.1136/bmjopen-2020-044573>

**O'Connell, B.**, Ostaszkiwicz, J., & Ockerby, C. (2021). Reflections on implementing an evidence-based educational intervention in residential aged care. *Collegian: The Australian Journal of Nursing Practice, Scholarship and Research*, 28(2), 171-177. <https://doi.org/10.1016/j.colegn.2020.06.003>

Raj, S., Mackintosh, S., Fryer, C., & **Stanley, M.** (2021). Home-based occupational therapy for adults with dementia and their informal caregivers: A systematic review. *American Journal of Occupational Therapy*, 75(1). <https://doi.org/10.5014/ajot.2020.040782>

**Saunders, R., Crookes, K.**, Atee M., Bulsara, C., Bulsara, M., Etherton-Beer, C., Ewens, B., **Gallagher, O.**, **Graham, R.**, Gullick, K., Haydon, S., Nguyen, KH., **O'Connell, B.**, **Seaman, K.**, & Hughes, J. (2021). Prevalence of frailty and pain in hospitalised adult patients in an acute hospital: a protocol for a point prevalence study. *BMJ Open*, 11(3). <https://doi.org/10.1136/bmjopen-2020-046138>

**Saunders, R.**, Dineen, D., Gullick, K., **Seaman, K.**, **Graham, R.**, Finlay, S. (2021). Exploring orthopaedic patients' experiences of the discharge journey: Implications for Nursing Care. *The Collegian* 29(1), 78-83. <https://doi.org/10.1016/j.colegn.2021.05.001>

**Saunders, R.**, **Seaman, K.**, Glass, C., Andrew, J., Gullick, K., Wilkinson, A., Davray, A. (2021). Clinical staff perceptions on the quality of end-of-life care in an Australian acute private hospital: a cross-sectional survey. *Australian Health Review*, 45(6), 771-777. <https://doi.org/10.1071/AH20329>

**Saunders, R.**, **Seaman, K.**, Glass, C., Gullick, K., Andrew, J., Davray, A. (2021). Improving the safety and quality of end-of-life in an Australian private hospital setting: An audit of documented end-of-life care. *Australasian Journal on Ageing*, 2021. <https://doi.org/10.1111/ajag.12986>

**Vafeas, C.**, Jacob, E., & Jacob, A. (2021). Measuring attitudes of those caring for people living with dementia: A quantitative survey. *Contemporary Nurse*, 56(5-6), 491-504. <https://doi.org/10.1080/10376178.2021.1894958>

Wang, K., **Alan, J.**, Page, AT., Dimopoulos, E., Etherton-Beer, C. (2021). Anticholinergics and clinical outcomes amongst people with pre-existing dementia: A systematic review. *Maturitas*, 151(2021), 1-14. <https://doi.org/10.1016/j.maturitas.2021.06.004>

# BOOKS AND CHAPTERS

**Vafeas, C.** & Slatyer, S. (2021) *Gerontological Nursing. A Holistic Approach to the Care of Older People* (1st Ed). Elsevier.

**Porock, D.** (2021). The Caregiver. In **Vafeas, C.** & Slatyer, S. (Eds.) *Gerontological Nursing. A Holistic Approach to the Care of Older People* (1st Edn). Elsevier.

**Read, S.** & Slatyer, S. (2021). Neurocognitive Disorders. In **Vafeas, C.** and Slatyer, S. (Eds) *Gerontological Nursing. A Holistic Approach to the Care of Older People* (1st ed). Elsevier.

**Smyth, A.** (2021) Sleep. In **Vafeas, C.** and Slatyer, S. (Eds) *Gerontological Nursing. A Holistic Approach to the Care of Older People* (1st ed). Elsevier.

**Vafeas, C.** and Slatyer, S. (2021) Gerontological Nursing in Australia and New Zealand in **Vafeas, C.** and Slatyer, S. (Eds) *Gerontological Nursing. A Holistic Approach to the Care of Older People* (1st ed). Elsevier

## GRANTS

### Funding body

Ramsay Hospital Research Foundation.

### Amount

\$311,235

### Project Title

*Optimising outcomes for frail hospitalised older adults – volunteer support and pain assessment interventions: A cluster randomised control trial.*

### Project team

**Saunders, R.**, Beer, C., Hughes, J., Atee, M., Bulsara, C., **O’Connell, B.**, **Gallagher, O.**, Ewens, B., Gullick, K., **Seaman, K.**, Nguyen, K., & Bulsara, M.

### Funding body

Ramsay Hospital Research Foundation.

### Amount

\$30,000

### Project Title

*Improving care for older adults with cognitive impairment in hospital through nurse led volunteer support interventions and a technology driven pain assessment.*

### Project team

**Saunders, R.**, Beer, C., Hughes, J., **Gallagher, O.**, Ewens, B., Irish, B., Leach, T., Gullick, K., **Ang, S.G.**, **Crookes, K.**, **Seaman, K.**, Nguyen, K.

## Contact

The Centre for Research in Aged Care is located at the Joondalup Campus of Edith Cowan University.

270 Joondalup Drive  
Joondalup WA 6027

E: [cracadmin@ecu.edu.au](mailto:cracadmin@ecu.edu.au)

[ecu.edu.au/schools/nursing-and-midwifery/our-research/centre-for-research-in-aged-care/overview](https://ecu.edu.au/schools/nursing-and-midwifery/our-research/centre-for-research-in-aged-care/overview)

## Find us at



[@crac\\_ecu](https://twitter.com/crac_ecu)