

Behind the Scenes: Sculpture by the Sea, Cottesloe | 2022

Noah BIRCH | Tom DE MUNK-KERKMEER | Norton FLAVEL |
Sachio INGRILLI | Jina LEE | Britt MIKKELSEN | HEAVY DUTY |
Tania SPENCER | Shaumyika SHARMA |

The behind-the-scenes process for creative work is often unseen but is a valuable part of making. This exhibition showcases and celebrates the diverse processes of nine artists in getting artworks exhibition ready for Sculpture by the Sea 2022.

Spectrum Project Space

Opening: 18 May 2022 5pm - 7pm
To be officially opened at 6.15pm by Sculpture by the Sea Board Member, Ms Jo Dawkins
Exhibition dates: 19 May - 16 June 2022
Gallery opening hours: Tuesday to Friday 10am - 4pm
Building 3, 2 Bradford St, Mount Lawley

ECU Galleries acknowledges the traditional custodians, the Whadjuk Noongar people, and Elders past and present. We pay our respects for the great privilege of living, making and researching on these unceded lands.

sculpture
by the sea

ECU Galleries



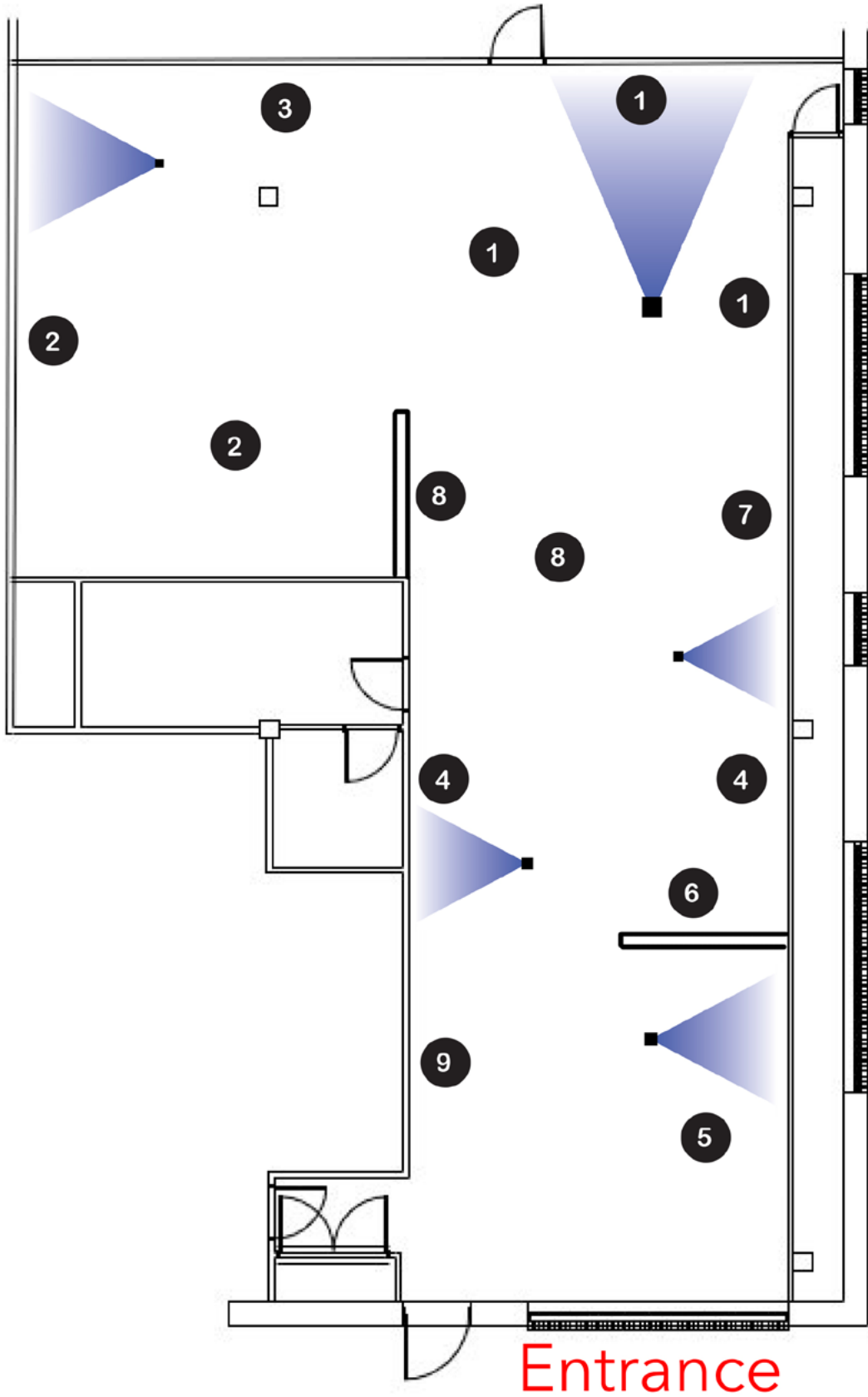
Introduction

Edith Cowan University (ECU) and Sculpture by the Sea, initiated the Behind-the-Scenes exhibition as an annual collaborative venture based on the exceedingly popular Cottesloe exhibition. Since 2017, ECU has curated an exhibition of working drawings; documentation of design concepts, structural and spatial logistics; maquettes; photographs; audio visual documentation and other resources created by artists in preparation for the Sculpture by the Sea event.

The aim of this exhibition is to demonstrate the process involved in getting artworks exhibition ready - from conceptual starting point to site preparation, engineering specifications, structural development, and artwork realisation. The wide variety of processes and methods for the planning and creation of works is the feature of this exhibition. Showcasing works that are usually unseen and yet so vital to the art making process is in essence, a celebration of the diversity of creative practice.

The ECU Galleries team would like to extend their appreciation and thanks to the nine artists who have generously given their time and shared their work for this exhibition.

We would also like to credit the photographers for their work in documenting the artists' works in situ at *Sculpture by the Sea*, Cottesloe: Richard Watson, Martine Perret, Jessica Wyld, Louise Coghill, David Dare Parker, and Duncan Wright.



Artist Bios and Statements

1

Noah BIRCH |

Noah Birch completed an Advanced Diploma in Industrial Design at Central TAFE in 2007 and has been both a Site Manager and an Exhibiting Artist at Sculpture by the Sea Bondi and Cottesloe. He has exhibited at SxS Cottesloe 6 times since 2009.

Birch is a USA born sculptor with a background in industrial design, carpentry, and photography. He works from his formalist roots to create metal sculptures of equilibrium incorporating underlying concept of equity, equality and balance. His current practice involves combining cut metal forms to create complete works that demonstrate dynamic internal relationships often emphasised by the addition of colour.

From the outside looking in, aluminium, 130 x 372 x 200 cm

Four elements of equal total volume and area, recombined to stress their interdependence, finding balance and a sense of completeness within itself.

2

Tom DE MUNK-KERKMEER |

Tom de Munk-kerkmeer was born in Australia but raised in the Netherlands. His mother is an artist and in her family, art is part of everyday life. In 1984, Tom started to paint and he spread his own wings again to continue his journey over this globe. Along the way he started to create 3D works and he did a 2 year apprenticeship casting bronze in Antwerp.

In 2000 Tom returned to Australia. Here he continued his artistic pursuit, creating several backyard studios, exhibiting, studying at Central TAFE and completing his Bachelor of Art and Communication at Edith Cowan University in 2009. Currently Tom has his studio/garden/sculpture park in West Northam.

Matter and its endless possibilities occupy the centre stage in his practice and materials are more often than not rescued from the refuse of humanity. The ritual of recycling is performed in the hope of restoring the cyclical relationship between humanity and the earth.

In more recent times Tom has been creating colourful abstract objects that playfully comment on contemporary society.

Spin, Wood, bamboo, metal, nylon, acrylic paint, 400 x 120 x 80 cm

With information technology at our fingertips and our eyes glued to that magic screen, we are getting more and more bombarded with information. In a playful way the artist comments on serious contemporary issues.

Spin is a kinetic work driven by wind power. It consists of a rectangular bamboo and metal frame creating a three-dimensional space imitating a digital screen. De Munk-Kerkmeer pulls apart Information technology to reveal 4 basic elements: movement, colour, sound and the word. The sculpture is a 'primitive' portrayal of the increasingly complicated technologies that are dominating contemporary society.

3

Norton FLAVEL |

Norton Flavel graduated with a Bachelor of Arts from Edith Cowan University in 2001. While developing as an artist, he worked at ECU in the Glass, Sculpture and 3D Design studios. Flavel has since managed the Cannery Arts Centre and ECU's Spectrum Project Space in Northbridge. He has exhibited work both nationally and internationally and worked on public art projects and consulted for well known WA artists, particularly in the techniques of moulding, casting, fabrication and installation. He established *Blastform*, a company using explosive forming techniques to produce complex metal forms.

Figurative Abstraction, Aluminium, 200 x 60 x 60 cm, 180 x 57 x 57 cm, 150 x 50 x 50 cm

Figurative Abstraction is an exploration of the relationship between the person and objects. Flavel blends the figurative and abstract in a series of aluminium columns in which human forms imprint within and emerge from the columns' surface.

4

Sachio INGRILLI |

Sachio is a Mechanical Engineering and Physics student at UWA currently writing an honours thesis on the design of rocket air-brakes for apogee control. He also works with the UWA Aerospace team building custom rockets.

Exhibiting at *Sculpture by the Sea*, Cottesloe for the first time in 2022, Ingrilli adapted his background in engineering and skills of 3D modelling, computer programming and manufacturing to the art/design world in a new, unconventional way. Ingrilli had

the idea to exhibit a sculpture whilst isolated in quarantine last year.

Perspective, Stainless steel, 300 x 520 x 520 cm

Perspective is a playful array of 3.2m-high stainless-steel posts that combine to display two words when viewed from different angles – “Yes” or “No” depending on the vantage point. The sculpture physically manifests the notion that art can be interpreted in different ways depending on the viewer’s perspective.

Ingrilli’s work exemplifies how sculptural works, particularly those of grandeur like the works of SxS, tend to sit within multiple forums of practice at the same time. Perspective simultaneously occupies the scientific, mathematical, and artistic space.

5

Jina LEE |

South Korean born Jina Lee immigrated to Australia in 2013. She began her journey as a sculptor in 1999 after being accepted into the Kaywon School of Arts in South Korea. Lee specialises in stone sculptures inspired by organic forms, she uses traditional techniques of chiselling and polishing to present a tactile and timeless finish. Lee works with all types of stone and incorporates other materials such as bronze and rope to compliment her sculptures.

Lee is hands-on during all stages of her artistic process; from designing initial concepts, sourcing materials, and physically creating the works herself at her studio at J Shed in Fremantle, WA. Her sculptures are installed in public collections both interstate and internationally.

Unify, Donnybrook Sandstone, Carrara Marble, Kimberly Granite, Rope, 180 x 90 x 60 cm

Inspired by traditional Korean rings ‘Garakji,’ the two rings represent unity and harmony held together with rope to signify our connection. There are two birds looking at each other as a sign of hope we maintain despite the challenges we face.

6

Britt MIKKELSEN |

Britt Mikkelsen is a Perth sculptor, designer, and public artist whose work explores the hidden beauty in nature, the lost things, and the things we often ignore in our daily lives. From public art and sculptural works, through to commercial design and fabrication of lighting for commercial interiors, she has been involved in the

WA art community for over 20 years. Mikkelsen is currently represented by Stala Contemporary in West Perth and Studio Gallery in Yallingup.

Anthroposcenic, stone, found objects, resin, 112 x 140 x 110 cm

Anthroposcenic is comprised of found objects embedded in resin and encapsulated within a large piece of stone, investigating geology and reimagining fossils as sculptural forms. Like an exhibit in a natural history museum, the work depicts our society, trapped in a petrified narrative. We are reminded of man's influence on nature, but also conversely of nature's resilience. Mikkelsen allows a view into our future world and asks the viewer to contemplate what will be left of our society thousands of years from now.

7 HEAVY DUTY |

HEAVY DUTY is a group dedicated to highlighting social and environmental issues through public artwork. The members of HEAVY DUTY have backgrounds in architecture, art and design. Their work has been exhibited with the City of Melville, the Museum of Freedom and Tolerance and MAN-TLE, and the group has collaborated and created commissioned works with Butter Goods, the West Australian Forrest Alliance and RTRFM.

Beach Goals, Aluminium, steel, 2000 x 1200 x 8 cm

An interactive installation uniting two Australian Icons: Australian Rules Football and the Ocean. Where the climate crisis in Western Australia is seemingly ignored, football maintains its status as a cultural icon, distracting a country from the reality of environmental collapse. Beach Goals is an interactive installation inviting participants to 'kick a goal', materialising an unimaginable issue whilst highlighting the need to WAKE UP before it is too late.

8 Tania SPENCER |

Tania Spencer lives and works rurally from Lake Grace, WA. Although currently working with wire, Spencer is a multi-media artist and often works with recycled and found materials. Her work is simple in form yet meticulous in construction, her general practice questions our state of existence and awareness through social and environment context.

Tania currently creates large scale knitted installations constructed with fencing

wire and wire embroideries that are couched onto metal supports. Instead of using needles and yarn, Spencer knits wire with tools such as drills and hand bending jigs.

Spencer values the practice of the passing on of hand making skills throughout generations, she preserves the original hand makers' mark in our technological age. Her work investigates the role of gender and craft within the artworld by mixing textile processes with rural industrial materials.

Indiana, copper, patina. 120 x 120 x 3cm

Indiana Tea House, love it or hate it, this precious Western Australian icon of Cottesloe Beach will finally bloom into its full potential with the forthcoming facelift.

9

Shaumyika SHARMA |

Shaumyika Sharma is an architect and artist who has worked in the US, the UK, Australia, Singapore and India for over 15 years. Her most extensive experience has been at architecture practices in London and she has also taught architecture and interior design at the National University of Singapore, Cooper Union and NYU. Her art (film and photography) has received critical acclaim in New York and Singapore.

Sharma's early visual vocabulary was informed by the shimmering beaches of Australia where she grew up, and the colours of the rich textile traditions of her native India. Working and teaching in several cities across the globe, she draws inspiration from vastly different landscapes and cityscapes, her work across media builds on the cross-cultural appeal of abstract forms and geometry.

Up to Our Necks, Concrete, 114 x 400 x 65 cm

Up to Our Necks is comprised of three abstract concrete heads. The title connotes playful moments spent on the beach buried up to our necks in sand, but also refers to the idea of feeling overwhelmed in these trying times.