

# Costume Elegies | 2022

**Costume Elegies** by **Jody QUACKENBUSH**, is an exhibition of photographic prints and textile remnants. The works, created over the last seven years, are what the artist calls 'visual elegies' to deceased, famed, and, in some cases, largely forgotten women. Among them are artists, colonial botanists, and asylum patients.

All photographs in the exhibition were created in collaboration with **Juliet DUVAL**, **Miles NOEL** and **Michelle LUCKING**

For sale enquiries please contact the artist directly via [artjoquack@gmail.com](mailto:artjoquack@gmail.com)

## Spectrum Project Space

Opening: 13 April 2022 5pm - 7pm

To be officially opened by Dr **Nicola KAYE**

Exhibition dates: 14 April - 12 May 2022

ACDC Artist Floor Talk: 27 April 2022 12.30 - 1.30pm

Gallery opening hours: Tuesday to Friday 10am - 4pm and Saturdays 11am - 2pm

Building 3, 2 Bradford St, Mount Lawley

*ECU Galleries acknowledges the traditional custodians, the Whadjuk Noongar people, and elders past, present and emerging. We pay our respects for the great privilege of living, making and researching on these unceded lands.*

ECU Galleries



## **Introduction**

Jody Quackenbush's **Costume Elegies** is an exhibition of photographic prints and textile remnants. The exhibition is a memorial to a series of works created over the last seven years; works the artist describes as 'visual elegies' to deceased, famed, and, in some cases, largely forgotten women. Among them are artists, colonial botanists, and asylum patients.

The series had its origins in an artwork that repurposed a chair that had belonged to the artist's deceased grandmother, reflecting the organic way Jody works. Constantly collecting and repurposing, dismantling and reassembling. Thus, much of her work is ephemeral, where the only physical evidence of a photoshoot that remains is the photograph itself, and the echoes and traces of previous, now deceased, artwork can be found in more recent assemblages.

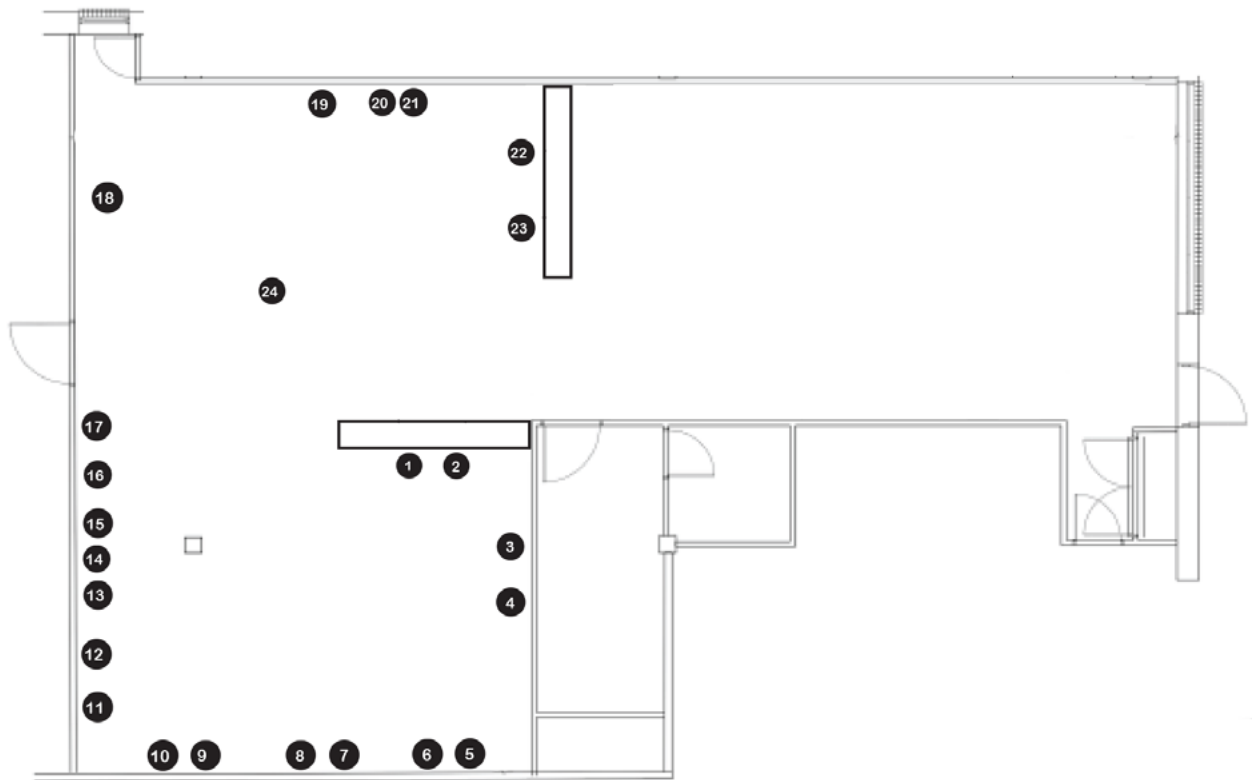
## **Artist Bio**

Jody Quackenbush is a multi-disciplinary artist based in Perth. She completed studies in painting and sculpture at the Western Australian School of Art, Design and Media in 1999 and was selected for PICA's annual Hatched exhibition in 2000. Jody completed a Bachelor of Visual Art from Edith Cowan University (ECU) in 2007 and has undertaken studies at Massey University (NZ) in Textile Design.

Jody has twice been selected for the Joondalup Invitation Art Prize, and won the Highly Commended award at the inaugural York Botanic Art Prize in 2020.

More recently, Jody has had photography and textile works acquired by the Cruthers Collection of Women's Art, held at the University of Western Australia.

Instagram: **@jodyquackenbush**



- 1** **Grandmother's (maternal) chair mask**, 2015, fabric & haberdashery, dimensions variable. \$400 (display mannequin NFS)
- 2** **Grandmother's (maternal) chair mask**, 2015, Giclee print on archival textured cotton rag, 59.4 x 59.4cm. Photo by Michelle Lucking. \$350
- 3** **Elisabeth Louise Vigee Le Brun mask**, 2017, fabric, wig & haberdashery, dimensions variable. \$400 (display mannequin NFS)
- 4** **Elisabeth Louise Vigee Le Brun (Alina Tang)**, 2017, Giclee print on gold fibre archival rag, 59 x 84cm. Photo taken by Juliet Duval. \$350
- 5** **Louise Nevelson (Simone Johnston)**, 2017, Giclee print on gold fibre archival rag, 59 x 84cm. Photo taken by Juliet Duval. \$350
- 6** **Elegy to Louise Nevelson**, 2022, wood, spray paint, glue, alumalux printed image, 44 x 54cm. Photo taken by Juliet Duval. \$1000
- 7** **Berthe Morisot (Carolina Arsenii)**, 2017, Giclee print on gold fibre archival rag, 59 x 84cm. Photo taken by Juliet Duval. \$350
- 8** **Berthe Morisot Bustle**, 2007, fabric & haberdashery, dimensions variable. \$450
- 9** **Meret Oppenheim (Gemma Ben-Ary)**, 2017, Giclee print on gold fibre archival rag, 59 x 84cm. Photo taken by Juliet Duval. \$350

- 10 **Meret Oppenheim Gloves (Remnant)**, 2017, gloves, embroidery thread and paint, dimensions variable. NFS
- 11 **Dorothea Tanning (Tarryn Gill)**, 2017, Giclee print on gold fibre archival rag, 42 x 59 cm. Photo taken by Juliet Duval. \$200
- 12 **Dorothea Tanning Gargoyle Hat**, 2017, fabric, wire & haberdashery, dimensions variable. \$400 (display mannequin NFS)
- 13 **Elegy I Louise Bourgeois**. 2022, fabric transfer, wood, paint & fabric, 27.5 x 35cm. NFS
- 14 **Elegy II Louise Bourgeois (Claire Bushby)**, 2022, Inkjet print on watercolour paper in mixed media frame, 21 x 29.7cm. Photo taken by Juliet Duval. \$50
- 15 **Louise Bourgeois Neck Piece**, 2017, fabric, fake pearls, paint, plastic, dimensions variable. NFS
- 16 **Georgia O'Keeffe (Elizabeth Marruffo)**, 2017, giclee print on Gold Fibre Archival Rag, 42 x 59 cm. Photo taken by Juliet Duval. \$200
- 17 **Georgia O'Keeffe necklace**, 2017, beads, string, fabric, spraypaint, dimensions variable. \$150
- 18 **Elegy to Ivy Derapas (maternal great-grandmother)**, 2016, projected image. Dimensions variable. NFS
- 19 **May the end be blest assemblage remnant**, 2020, fabric, quokka skull, seed pods, small vase, dimensions variable. NFS
- 20 **May the end be blest, Georgiana Molloy**, 2022, polychrome pencil on Giclee print on Hahnemuhle fine art rag, 51 x 76 cm. Photo taken by Miles Noel. \$750
- 21 **May the end be blest assemblage**, 2020, Giclee print on Gold Fibre Archival Rag, 59.4 x 84.1 cm. Photo taken by Miles Noel. \$350
- 22 **This is my nightmare, self portraits as Camille Claudel**, 2019, Giclee print on Gold Fibre Archival Rag, 84.1 x 34 cm. Photo taken by Miles Noel. \$300
- 23 **Self portrait remnant as Camille Claudel (perseus + the gorgon)**, 2019, snake statue, plinth, photo and frame, dimensions variable. Photo taken by Miles Noel. NFS
- 24 **Elegy to Agnes Richter, Strong garment no 2.**, 2019 - 2022, beads, buttons, fabric, haberdashery, dimensions variable. \$1100