



Edith Cowan University

2025 ATAR Revision Seminars

ATAR HUMAN BIOLOGY

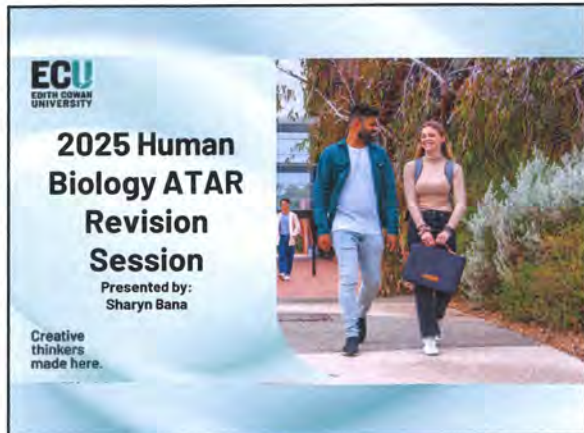
Key Curriculum Points

Examination Tips

Revision Questions

Prepared and presented by

Ms Sharyn Bana



1

Session Outline

Exam techniques, Nervous

- Break – 5 mins

Endocrine, Homeostasis

- Break – 10 mins

Immunity, Biotechnology

- Break – 5 mins

Evolution, Working scientifically

2

The Exam – 10 mins Reading Time

- 1. Read and decide on your extended questions (need to pick 1 out of 2 for Unit 3 and 1 out of 2 for Unit 4)
- 2. Read EVERY word of the Short Answers (worth 50% of the paper)
- 3. Cover the alternates and read just the STEM of the Multiple Choice.

3

Reading Multiple Choice

1. A boxer showered with punches to the head that force the head up and back may cause damage to the cerebellum against the back of the skull. Symptoms that a boxer would show if the cerebellum was injured in this way would include:
 - a) loss of memory.
 - b) inability to regulate temperature.
 - c) extreme hunger.
 - d) lack of coordination between muscle groups.

4

The Exam – 3 hrs Working Time

- 1. Write plans for the Extendeds (5 mins)
- 2. Do Multiple Choice – (30-35 mins) - 30%
- 3. Time check – end of multiple choice
- 4. Short Answers – (90-100 mins) - 50%
- 5. Time check – halfway through and at end
- 6. Extended Answers – (40 mins) - 20%
- 7. Time check – once after each question

5

The Exam – Doing Multiple Choice

- Cover alternates, read the stem, THINK about solutions / word association, then FIND the answer
- Cross off any alternates that you can, choose from what is left
- If two alternates are close – one is usually the answer!
- WARNING! Terms to watch out for:
only, always, never, except, incorrect



6

Example: Multiple Choice

1. The peripheral nervous system
 - a) is split into autonomic and somatic branches.
 - b) directs all messages towards the CNS.
 - c) is split into afferent and efferent branches.
 - d) is only made up of white matter.

7

The Exam – Doing Short Answers

- List / Name / State questions
- 1 word or term for 1 mark
- No elaboration required
- Write one item per line
- Use dot points
- Number of answers = number of marks
- Number of answers = number of lines

8

Example: List / Name / State

State two ways the hypothalamus communicates with the pituitary gland. (2 marks)

Answer:

__releasing factors / inhibiting factors / hormones (1)
 __nerve impulses (1) _____

9

The Exam – Doing Short Answers

- Explain / Describe / Discuss / Why questions
- Requires sentences
- One idea per sentence
- One idea for 1 mark
- WARNING - *Describe* requires a WHAT or HOW, not just a label eg: "describe 2 factors" requires more than "list 2 factors"! *Explain* wants to know WHY?

10

Example: Describe / Explain

Describe two ways in which the hypothalamus communicates with the pituitary gland. (2 marks)

__ The hypothalamus communicates with the anterior pituitary through hormones called releasing or inhibiting factors in the bloodstream (1). It communicates with the posterior pituitary through nerve impulses sent through axons to release hormones from axon terminals (1) _____

11

The Exam – Doing Short Answers

- Compare / Contrast / Differentiate between
- Compare – how are they similar **AND** different
- Contrast – how are they different?
- Differentiate – how are they different?
- You MUST match criteria / concept on both sides eg: number of neurons in pathway for autonomic? Must state the same concept for somatic!
- Use a table!
- Mark allocation can vary – 1 mark for both sides OR 1 mark for each – use lines and knowledge base to guide you

12

Example: Differentiate / Compare / Contrast

Show the differences between the structure and function of sensory and motor neurons. (4 marks)

	Sensory	Motor
Structure	Cell body to one side of the neuron (1)	Cell body at one end of the neuron (1)
Function	Conducts impulses towards the CNS (1)	Conducts impulses away from the CNS (1)

13

How would your WACE Markers mark this....??

Show the differences between the structure and function of sensory and motor neurons. (4 marks)

	Sensory	Motor
Structure	Has a cell body and axon Cell body to one side of the neuron	Cell body at one end of the neuron
Function	Carries nerve impulses Conducts impulses towards the CNS	Carries nerve impulses Conducts impulses away from the CNS

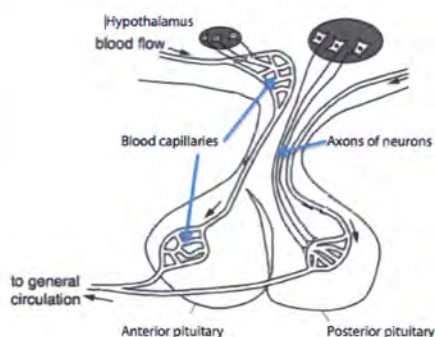
14

The Exam – Doing Extended Answers

- Read question and decide where the marks are going to come from
- Use a format that SUITS the question: annotated diagram, table, dot points, paragraphs
- Do NOT do introductions or conclusions
- Use appropriate terminology
- Label AND annotate any diagrams
- Use subheadings to signpost for your marker

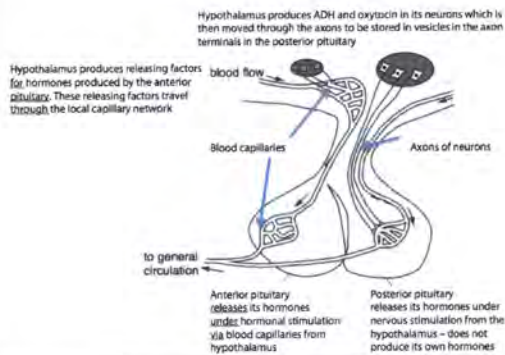
15

Labelling



16

Annotation



17

Finished the Exam Early?

- Final Checks

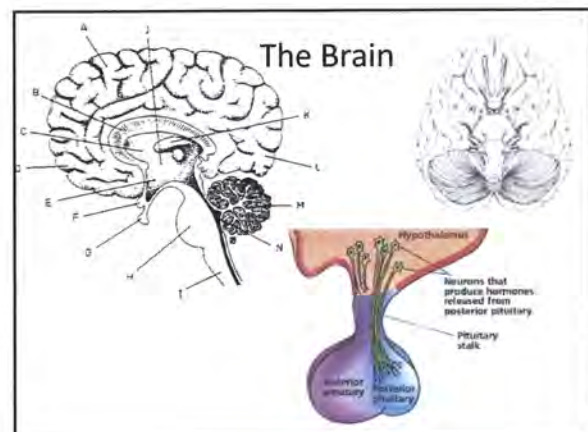
- 5 mins – scan that you have one multiple choice answer for each question, scan short answers looking for questions that have not been addressed or where number of marks don't match answers. Put in your best guess on anything not completed. Check extended questions have been numbered on all pages.
- 10 mins – as above, and read short answers carefully to ensure mark allocations have been met, especially questions worth 2 or more marks
- 15 mins – as above, and read over extended answers

18

Diagrams

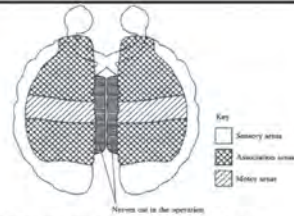
- Brain labelling - structure and function
- Three different types of neurons
- Reflex arc
- Action potential graph
- Action potential across myelinated and unmyelinated axons
- Transmission across synapses

19



20

Quick Test!



A small electric shock was used to stimulate part of the brain. This caused a muscle in the left leg to contract.

- Label the diagram with the letter X to show the part of the brain that would cause the muscle to contract when stimulated. (1 mark)
- During a surgical operation, the nerves connecting the two hemispheres were cut. What is the name of this structure that was cut? (1 mark)
- The diameter of the pupil is affected by bright light. Describe the part played by the autonomic nervous system in altering the diameter of the pupil. (2 marks)

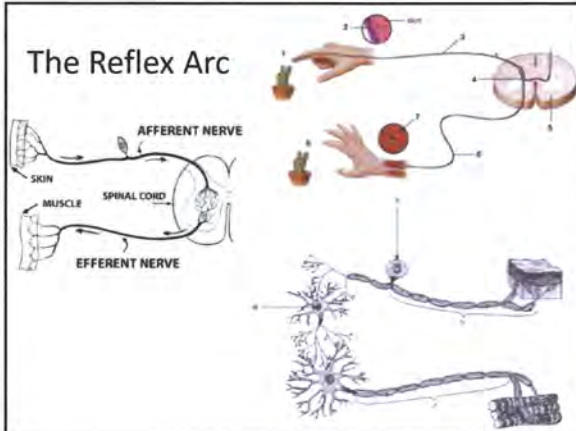
21

The Spinal Cord



22

The Reflex Arc



23

Nervous - Extended Questions

- Compare and contrast the somatic and autonomic nervous systems
- Compare and contrast the sympathetic and parasympathetic nervous systems
- Describe a reflex arc
- Transmission of nerve impulses
- Transmission across synapses

24

Quick Test!

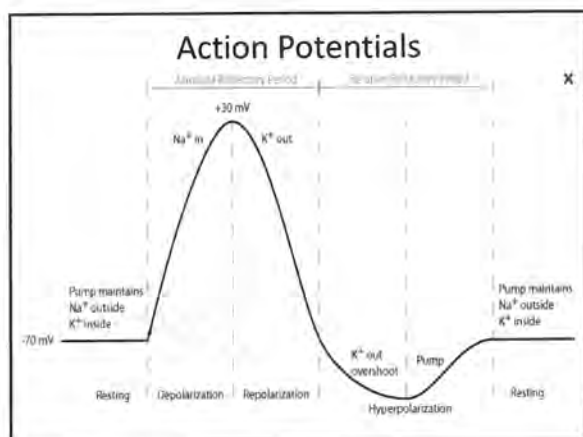
Compare and contrast the structure and function of the somatic and autonomic nervous systems. (6 marks)

25

SYMPATHETIC vs PARASYMPATHETIC NERVOUS SYSTEM

- **Division of the nervous system it belongs to** – both autonomic
- **Neurotransmitter used** – noradrenalin vs acetylcholine
- **Overall general effect** – stimulates vs returns to homeostasis
- Specific effect on the heart – increase vs decrease
- lungs – increase vs decrease
- Liver – increase vs decrease
- Iris – pupil increase vs decrease
- sweat glands – increase vs decrease
- **salivary glands** – decrease vs increase
- skeletal muscle blood vessels – increase vs decrease
- adrenal medulla – increase vs decrease
- **digestive system** – decrease vs increase

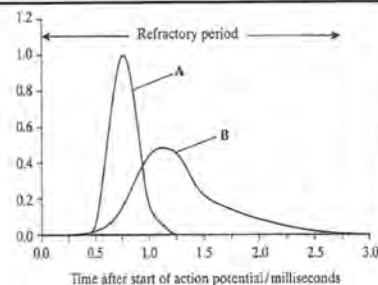
26



27

Quick Test!

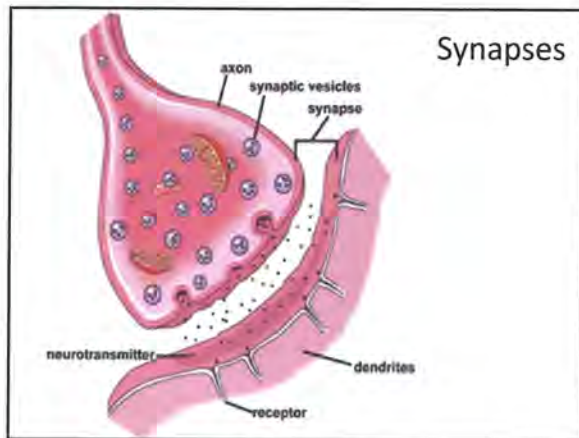
Permeability of axon membrane to ions/arbitrary units



The graph shows the changes in the permeability of a section of axon membrane to two ions involved in producing an action potential.

- Name the two ions A and B. (2 marks)
- Provide a reason for your answers. (2 marks)

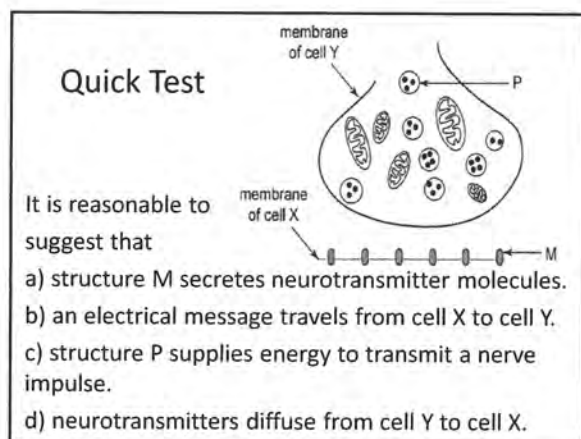
28



29

- **Calcium** floods in
- Causes contractile proteins to pull vesicles towards surface of axon terminal
- Neurotransmitters in vesicles released by **exocytosis**
- Neurotransmitters move across by **diffusion**
- Neurotransmitters attach to receptors on post synaptic neuron
- Cause **sodium channels** to open in that neuron
- Action potential continues in the next neuron
- **Acetylcholinesterase breaks neurotransmitter down**
- **Reuptake channels move broken neurotransmitter back into presynaptic axon for reuse**
- **Active transport and ATP required**

30



31

Alzheimer's and Parkinson's

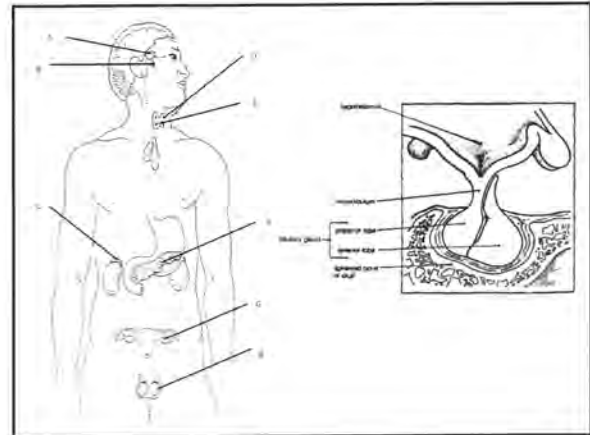
- **Differences**
 - **Acetylcholine**
 - Plaques/tangles
 - Memory loss
 - Mood swings
 - Personality changes
 - **Comparisons**
 - Can't be cured
 - **Loss of neurotransmitters**
 - associated with older age
 - **Treatment – stem cell therapy / CRT**
- | |
|-----------------|
| Dopamine |
| Stooped posture |
| Tremors |
| Rigidity |
| Shuffling gait |

32

Diagrams

- Endocrine glands in the body
- Hypothalamus and pituitary relationship
- Thyroxine feedback loop (homeostasis)
- Lipid soluble and water soluble hormones
- Hypo and hyper thyroidism

33



34

Endocrine - Extended Questions

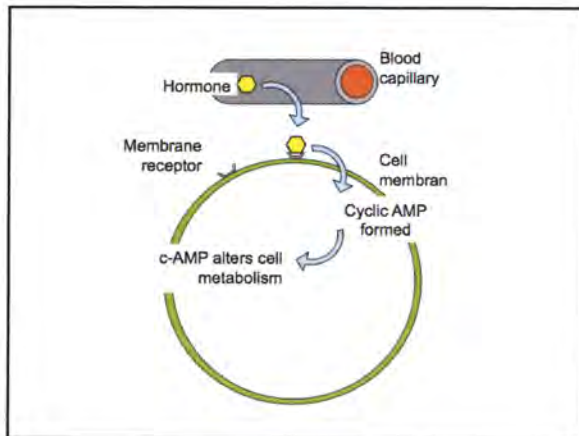
- Differentiate between lipid soluble and water soluble hormones
- Relationship between hypothalamus and pituitary
- Thyroxine feedback loop
- Hypo and hyperthyroidism
- Compare/contrast nervous and endocrine systems

35

Water Soluble Hormones

- Protein / amines
- Act for a short period of time
- **Carried dissolved in plasma**
- Attach to receptors on cell membranes
- Do not enter cells
- Activate a secondary messenger inside cell
- Affect enzyme action in cytoplasm
- Eg: ADH, adrenalin (most hormones)

36

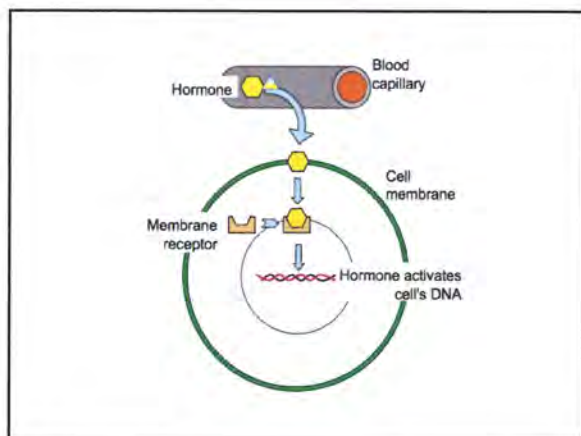


37

Lipid Soluble Hormones

- Steroid hormones
- Lipid soluble (not water soluble)
- Last longer
- Cause permanent changes
- Carried in blood attached to a protein
- Move through cell membranes
- Enter cells
- Attach to receptors in cytoplasm, on organelles such as mitochondria, in nucleus, on genes
- Activates the genes to control production of proteins by altering mRNA transcription
- Eg: testosterone, cortisol, oestrogen, progesterone, aldosterone

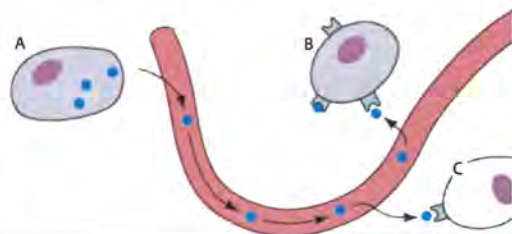
38



39

Quick Test!

- What category of hormone is shown here? (1)
- How do you know? (1)
- What would Cells B and C be called? (1)



40

Relationship between the
hypothalamus and pituitary –
The ANTERIOR pituitary story

- Hypothalamus produces r.f and i.f which are hormones
- These factors travel through the **local bloodstream** to the anterior pituitary
- These factors cause the anterior pituitary to release / stop releasing its own hormones into the blood
- In a diagram – look for **blood vessels** connecting the hypothalamus and anterior pituitary

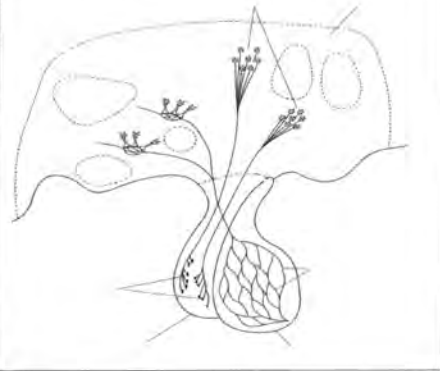
41

Relationship between
hypothalamus and pituitary –
The POSTERIOR pituitary story

- Hypothalamus **produces** two hormones: ADH and oxytocin
- These two hormones are passed in vesicles down long axons to axon terminals in the posterior pituitary where they are **stored**
- Nervous impulses from the hypothalamus cause the **release** of these hormones from the posterior pituitary into the bloodstream
- In a diagram – look for nerve fibres connecting the hypothalamus and posterior pituitary

42

Structures of the hypothalamus and pituitary gland



43



Be careful –
posterior pituitary
contains blood
too!

44

Hypo / Hyper - thyroidism



45

Differentiate between the Nervous and Endocrine Systems

- Components – what is it made up of?
- Mode of transmission – how does it communicate with parts of the body?
- Specificity – how many **different targets** can it talk to at the same time?
- Speed of transmission – how quick does the message travel?
- Response time – how long does the action occur for?
- Persistence - how long does the actual stimulation last?

46

Homeostasis - Diagrams

Feedback loops for:

- Glucose
- Carbon dioxide
- Water and thirst
- Temperature (including Thyroxine)

47

Homeostasis – Extended Questions

- Feedback loops: glucose, temperature, carbon dioxide, water, thirst, thyroxine
- Mechanisms of heat loss / heat gain: vasoconstriction, vasodilation, sweating, excretion, breathing, cell respiration, shivering, behavioural
- Mechanisms of heat transfer: conduction, convection, radiation, evaporation
- Diabetes

48

Positive and Negative Feedback

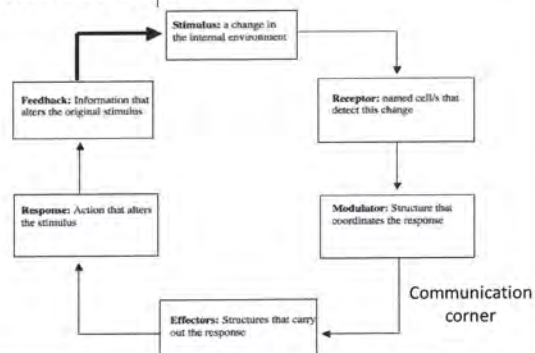
- Negative –
- feedback OPPOSES original stimulus



- Positive –
- feedback ENHANCES original stimulus

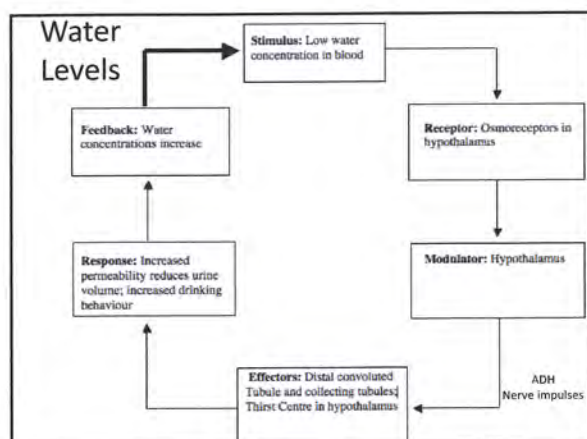
49

The Basic Cack



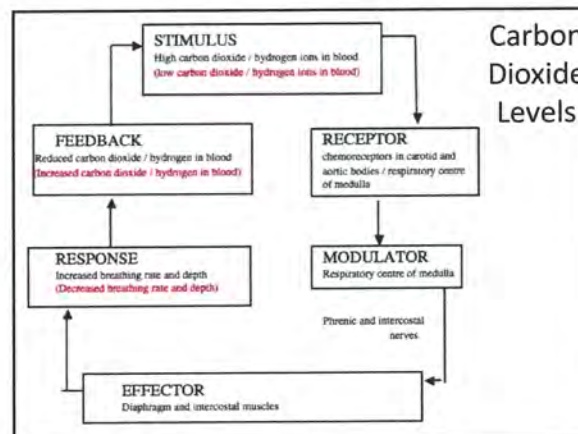
50

Water Levels



51

Carbon Dioxide Levels



52

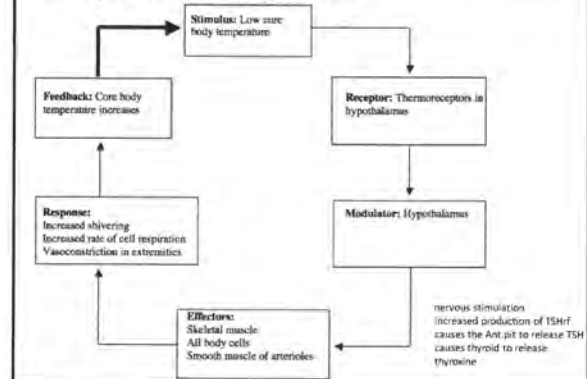
Heat Transfer

GAIN or LOSE:

- Conduction – contact of solid to solid, solid to still liquid
Eg: lying on cold ground, standing in pool
 - Convection – solid to moving gas / solid to moving liquid
Eg: swimming, riding a bike in wind
 - Radiation – no contact
Eg: sun's rays, losing heat to the air around you
- LOSE only:
- Evaporation – liquid converted to gas
Eg: sweating

53

Temperature Regulation



54

Quick Test!

A hiker got lost in the Tasmanian bush during winter, when conditions dropped to -5°C and snow was 30cm deep. The hiker

- should bury himself in snow to increase heat gain through convection.
- will lose most heat through radiation.
- will shiver and vasodilate vessels in the skin to maintain core body temperature.
- should sit down on the ground to gain heat through conduction.

55

Glucose Homeostasis

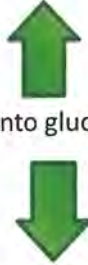
- Glucose
 - smallest unit of sugar
 - can move in and out of cells
 - is required for cell respiration
- Glycogen
 - medium term storage form
 - found in all body cells, esp. muscle
- Fat
 - long term storage form
 - found around organs, subcutaneously



56

Daily Glucose Hormones

- Glucagon
 - alpha cells
 - increases blood glucose
(by breaking glycogen down into glucose)
- Insulin
 - beta cells
 - decreases blood glucose
(causes glucose to move into cells, store it as glycogen, increases protein synthesis – which requires energy)



57

Serious Glucose Hormones

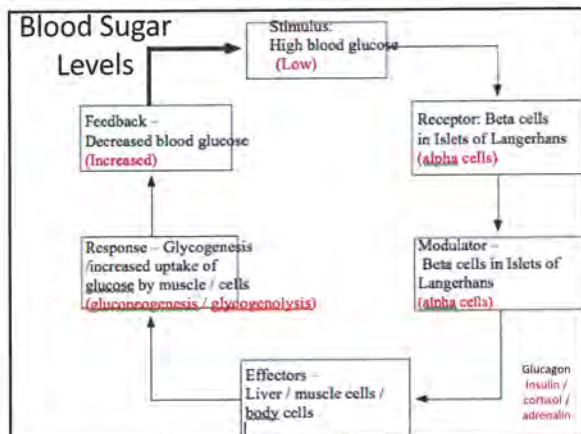
- Cortisol – from adrenal cortex
 - increases blood glucose
(converts glycogen to glucose, breaks down fat)
- Adrenalin – from adrenal medulla
 - increases blood glucose
(converts glycogen and lactic acid to glucose)

58

The processes

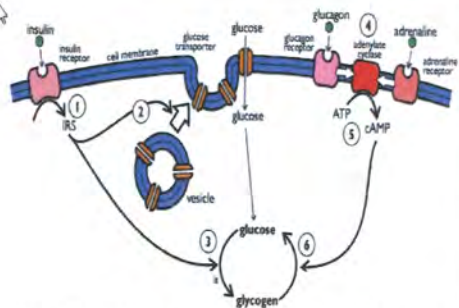
- Glycogenesis- Glyco = glycogen
Genesis = creation
Creation of glycogen (insulin)
- Glycogenolysis - Glyco = glycogen
Lysis = destroy
Destruction of glycogen (glucagon)
- Gluconeogenesis - Gluco = glucose
Genesis = create
Neo = new
Creation of glucose from new sources (cortisol, adrenalin)

59



60

Quick Test!



- a) What category of hormones do insulin and glucagon belong to? Justify your answer by referring to the diagram. (2 marks)
- b) Name the process occurring at point 6 in the diagram. (1 mark)

61

Diabetes Type I and II

Type I (insulin dependent)	Type II (insulin independent)
The body is unable to produce insulin	The body cannot produce sufficient insulin
This may be due to an autoimmune response, where the body's immune system attacks its own β cells in the islets of Langerhans	May also be due to the target cells losing their responsiveness to insulin
Normally begins in childhood (also called juvenile-onset diabetes)	Usually arises in people over 40 years old (late-onset diabetes)
Develops quickly, normally over a few weeks	Develops slowly
Symptoms: a high blood glucose level; glucose present in the urine; increased thirst and hunger; weight loss; the need to urinate excessively; tiredness	Symptoms are normally less severe and may be put down to 'overwork' or 'old age'

62

Quick Test!

Who is diabetic?
Give three reasons for your choice.

Table 3.3 The blood glucose levels of two people after consuming the same quantity of glucose.

Time after drinking juice (min)	Blood glucose level (mg/100 mL)	
	Matthew	Ely
0	86	85
15	110	125
30	140	170
45	115	190
60	90	210
75	80	210
90	84	200
105	85	180
120	85	145

63

Immunity - Diagrams

- Phagocytosis process
- Inflammation
- Ways antibodies work
- T and B cell cloning and action
- Primary and secondary response graphs

64

Immunity - Extendeds

- Types of microorganisms
- Ways in which diseases can be transmitted
- Non-specific immunity
- External vs internal immunity
- B cells
- How antibodies work
- T cells
- Types of immunity: natural, artificial, active, passive
- Sizes of immune response: primary, secondary, tertiary
- Vaccination programs / the ethics of vaccinating

65

Types of Microorganisms

Bacteria	Viruses
Seen using a light microscope	Seen using an electron microscope
Classified according to their shape	Classified according to their nucleic acid
Outer cell wall, cell membrane, DNA in cytoplasm	DNA or RNA surrounded by a protein coat
Reproduce by simple fission	Reproduce by taking over host cell DNA

66

Other microorganisms and Examples

- Fungi – typically affect the skin eg: thrush, tinea, ringworm
- Parasites – ectoparasites (fleas, ticks) or endoparasites (tapeworms)
- Bacteria – tetanus, whooping cough
- Virus – COVID, HIV, chickenpox, cold

67

Transfer Mechanisms

- Transmission by contact – direct or indirect
- Transfer of body fluids – blood, semen, saliva
- Infection by droplets – sneezing, coughing, talking
- Ingestion – through food or drink
- **Airborne transmission** – dehydrated particles
- Vector – other organism transmits it (but is not affected itself)

68

Quick Test!

Tuberculosis is a disease that results in bacterial growth in the lungs. It causes the sufferer to cough and find it difficult to breathe properly. How would tuberculosis be spread most effectively?

- a) Direct contact
- b) Vector
- c) Ingestion
- d) Droplets

69

Type of Immunity



70

Primary Defence - External Non-Specifics

- Skin – physical barrier, sebum (lysozyme and waterproofing)
- Mucous membranes –
- 1. Physical – turbinate bones in nose, hairs, cilia, mucous physically traps particles, cerumen
- 2. Chemical – acid (stomach, vagina), lysozyme (in most body fluids)
- Reflex actions – sneeze, cough, vomit
- Flushing actions - urine, tears

71

Secondary Defence - Internal Non-Specifics

- Phagocytosis – chemotaxis, adherence, ingestion, digestion, excretion
- Inflammation – mast cells release histamine, heparin, vasodilation causes redness, pain, swelling, heat, phagocytes result in pus



72

Internal Non-Specifics (con't)

- Fever – interleukins and prostaglandins (pyrogens) cause the hypothalamus to reset higher (feel cold, shiver, vasoconstriction). When fever breaks, hypothalamus resets down (feel hot, sweat, vasodilate). Aspirin prevents prostaglandins being produced.
- Lymphatic system – lymph nodes filter lymph, macrophages and phagocytes do phagocytosis (also stores B and T cells)

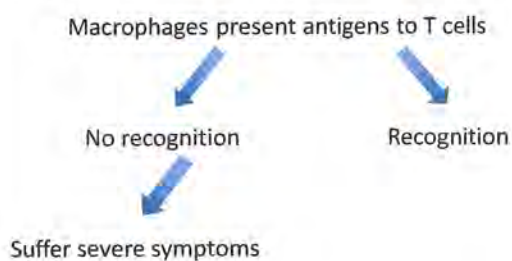
73

Tertiary Defences - Specific Immunity

- Immune responses that combat one particular type of pathogen / antigen / species of organism
- All lymphocytes arise in bone marrow – half migrate to the thymus and mature there (now called T cells), half remain in the bone marrow or migrate to the spleen and mature there (now called B cells)
- Once mature B and T cells migrate around the body to reside in all lymphoid tissue

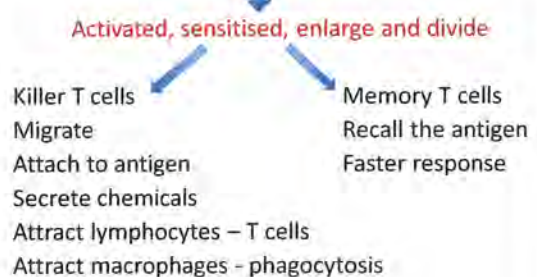
74

Cell Mediated Immunity – T cells

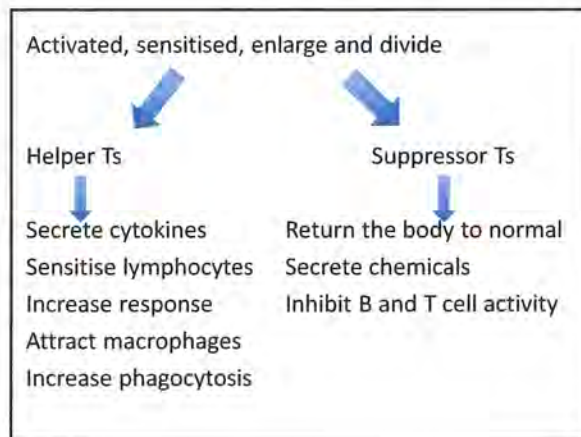


75

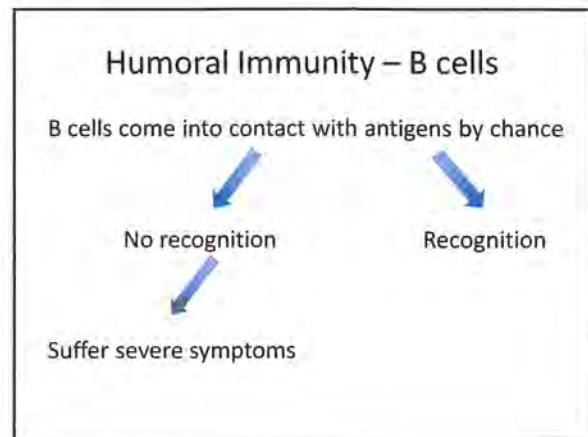
Recognition



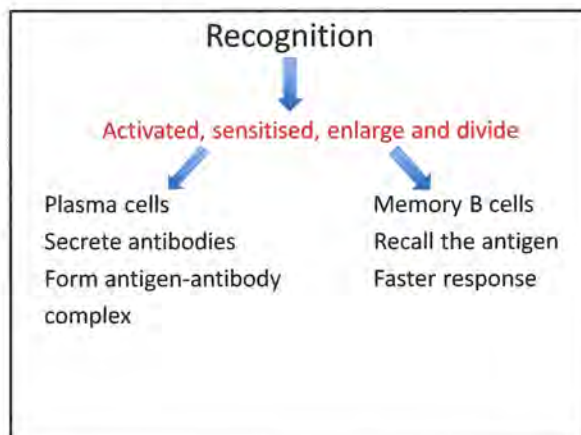
76



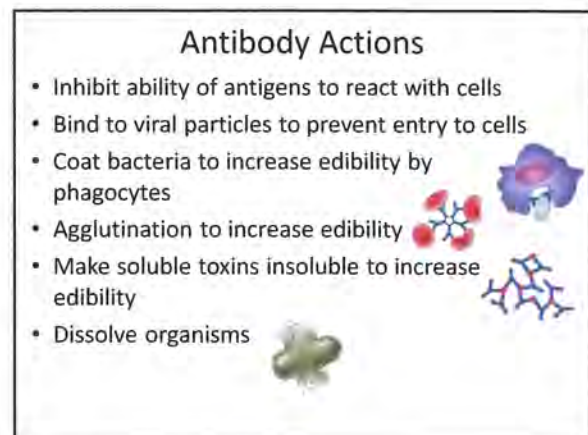
77



78



79



80

Types of Immunity

- Natural immunity – occurs without human medical intervention
- Artificial immunity – occurs due to human medical intervention
- Passive immunity – the person is given antibodies
- Active immunity – the person makes their own antibodies

81

Types of Immunity - Examples

- **Natural passive** - antibodies enter a baby across the placenta or via breast-milk
- **Natural active** - we catch a disease (antigen) from somebody and make our own antibodies eg: catch a cold
- **Artificial passive** - we are "injected" with **antibodies** after we have caught the disease eg: tetanus
- **Artificial active** - we are "injected" with an **antigen** so we make our own antibodies eg: vaccination

82

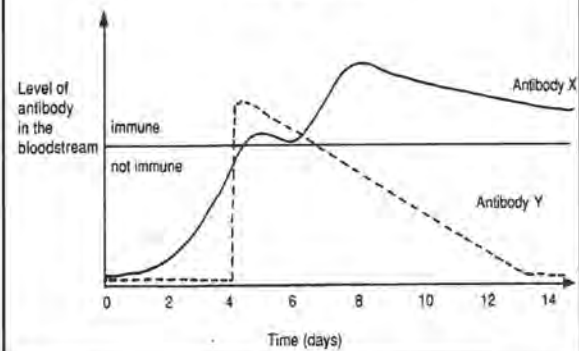
Quick Test!

A park ranger was injected with an anti-venom serum to treat a snakebite. The injection will not protect him against future snakebites because anti-venom serum provides

- active natural immunity.
- passive natural immunity.
- active artificial immunity.
- passive artificial immunity.

83

Quick Test!



84

- a) What type of immunity would be offered by Antibody X?
Antibody Y?
- b) What was person X and person Y injected with?

85

Vaccines

Vaccines – artificially produced by humans

- Attenuated living – only weakened, give a stronger longer lasting immune response
- Attenuated dead – killed outright, do not give as strong or long lasting an immune response
- Toxoids – made from chemicals produced by bacteria
- Sub-unit vaccine – made with part of the coat of a microorganism (genetic engineering)
- Conjugated – weak antigen joined to a strong antigen to produce a stronger immune response

86

Antibiotics

Antibiotics – produced by fungi to kill bacteria and fungi

- Bacteriostatic – prevents bacteria from reproducing
- Bacteriocidal – kills bacteria

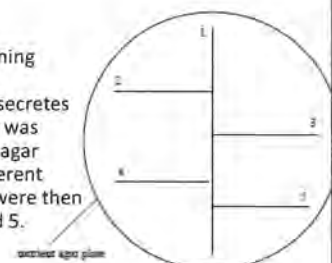
OR

- Broad spectrum – kill lots of different types of bacteria
- Narrow spectrum – kills only one specific type of bacteria

87

Quick Test!

The diagram shows a screening test to find out if a newly discovered microorganism secretes an antibiotic. The organism was first placed onto a nutrient agar plate along line 1. Four different known species of bacteria were then placed along lines 2, 3, 4 and 5.



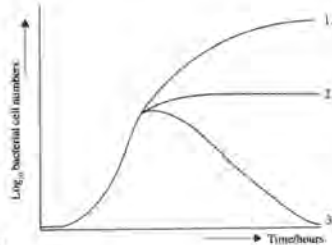
What results would you expect to see if the microorganism

- had no antibiotic activity? (1 mark)
- secreted a broad-spectrum antibiotic? (1 mark)
- secreted a narrow-spectrum antibiotic? (1 mark)

88

Quick Test!

The graph shows the number of bacteria formed over time for three different types of treatment for bacteria: 1, 2 and 3.



Which line depicts the least effective treatment? (1)
Which line shows a bacteriostatic treatment? (1)

89

Biotechnology - Diagrams

- DNA electrophoresis
- PCR process
- Recombinant DNA / genetic engineering

90

Biotechnology - Extendeds

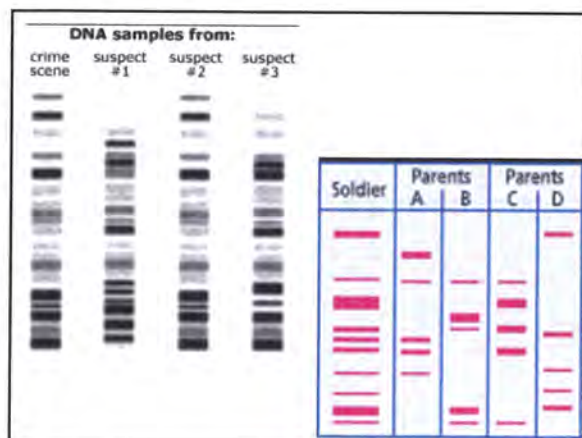
- PCR
- Genetic engineering eg: insulin
- DNA electrophoresis
- Bioinformatics

91

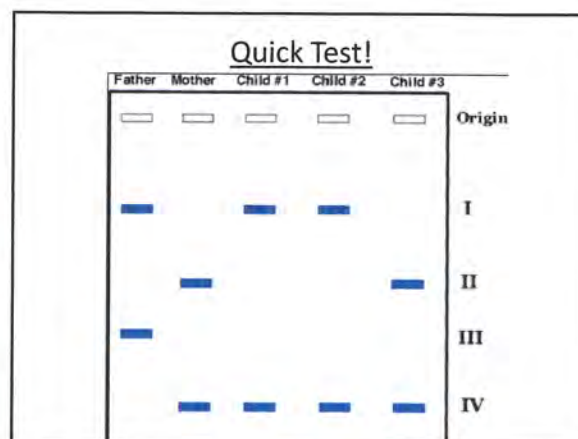
DNA Electrophoresis

- Used for: Forensics, Paternity, Maternity, Migratory patterns, Species identification, Identification of hereditary diseases
- DNA is negatively charged and moves towards the positive electrode (red)
- DNA separates due to fragment length – longer pieces do not move as far, shorter pieces move further

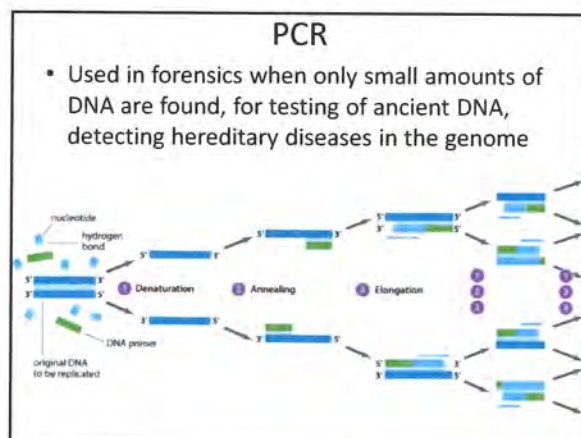
92



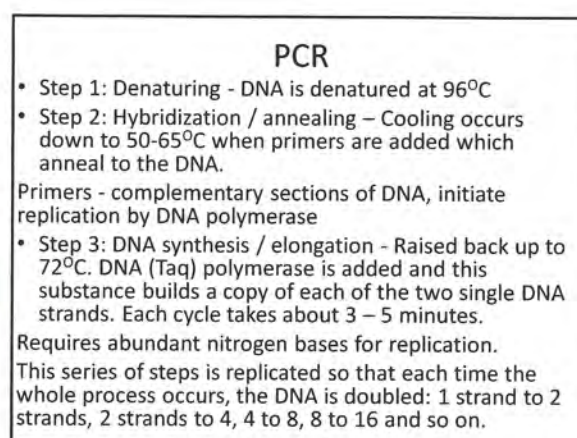
93



94



95

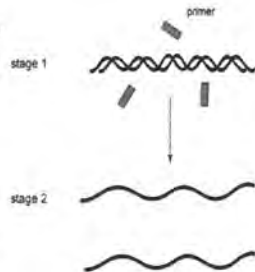


96

Quick Test!

a) What must be done between stages 1 and 2 to separate the strands of the DNA molecule? (1 mark)

b) Complete and label the diagram at stage 2. (2 marks)

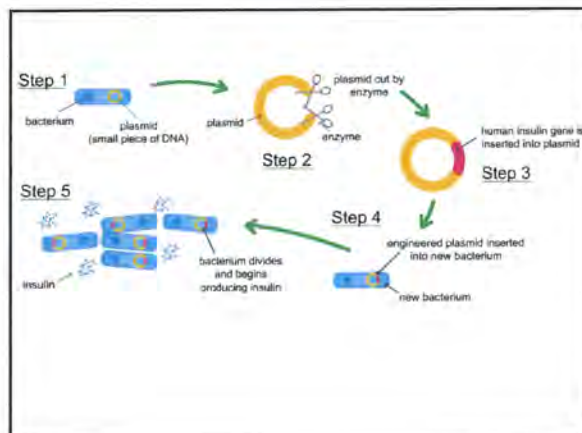


97

Recombinant DNA (genetic engineering)

- Introduction of new DNA into cells of an organism who normally doesn't have that gene
- Used for gene replacement technology, production of hormones (insulin, growth hormone), vaccines, proteins, Factor VIII
- Requires restriction enzymes, DNA ligase

98

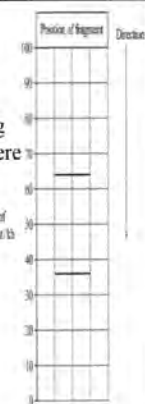
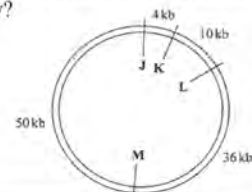


99

Quick Test!

Four restriction sites: J, K, L and M, are in a single plasmid. Distances between sites is measured in kb of DNA. A plasmid is cut using two restriction enzymes, then the fragments were separated by gel electrophoresis.

a) Which restriction sites were cut and how do you know?



100

Evolution – Diagrams

- The fossilisation process
- Dating techniques - Stratigraphy / superposition, C14 graph interpretation
- Evidence for evolution - DNA / amino acid sequences
- Hominin skulls
- Hominin vs Great ape skeletons
- Tools
- Other cultural artefacts

101

Evolution - Extendeds

- Sources of variation
- Mutations
- Heterozygote advantage (sickle cell)
- Natural selection process
- Speciation process
- Random genetic drift and founder effect
- Fossilisation
- Evidence for evolution (fossils, DNA, amino acids)
- Dating techniques – compare / contrast
- Pongid – Hominin comparison
- Hominin species comparison
- Tools over time

102

Sources of Variation

- Meiosis
- Crossing over
- Random assortment of chromosomes
- Mutation (germ line, somatic)
- Sexual reproduction

103

Natural Selection

- **Variation exists** in a population
 - Birth rate is higher than can be sustained
 - Size of population maintained over time
- Therefore:
- there must be a **struggle for existence**
 - Those with characteristics most suited to the environment are more likely to survive and reproduce (**survival of the fittest**)
 - Over time the **allele frequency** of that characteristic **increases** in the population and the population becomes more alike in that feature

104

Random Genetic Drift

- Occurs in small populations
- **Non directional** variation in allele frequencies that occurs by **chance**
- May not provide a selective advantage
- Eg: Dunkers (Blood type A 60% vs 45% in Germany)

105

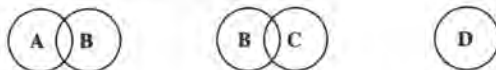
Founder Effect

- Occurs in small populations
- Not representative of the original gene pool
- Due to natural disaster, geographical barrier, religious isolation
- Eg: Pitcairn Island (CVD), Pingelap Island (total colour blindness) , Ashkenazic Jews (Tay Sachs disease)

106

Quick Test!

A, B, C and D are four populations of one organism. Overlapping circles indicate interbreeding of the populations concerned.



- a) Give two possible explanations as to why population D is not able to reproduce with the other populations. (2 marks)
- b) If conditions in the environment change rapidly, which population would be least likely to survive? Explain your answer. (2 marks)

107

Sickle Cell Heterozygote Advantage

- AA dies from malaria
- aa dies from sickle cell anaemia
- Aa does not die from malaria OR sickle cell (Relates to natural selection and changing allele frequency in different populations)

• ~~Thalassemia~~

• ~~Tay Sachs*~~

108

Evidence for Evolution - Fossils

Things to know about fossils:

- How are they made?

Alkaline / sedimentary / buried / rapid cover / no scavengers / no bacteria / no oxygen if wet acidic soil (peat bogs = soft tissue kept)

- Why can't we find them?

Look in the wrong places / not recognised / too deep / destroyed by pressure or heat / not accessible

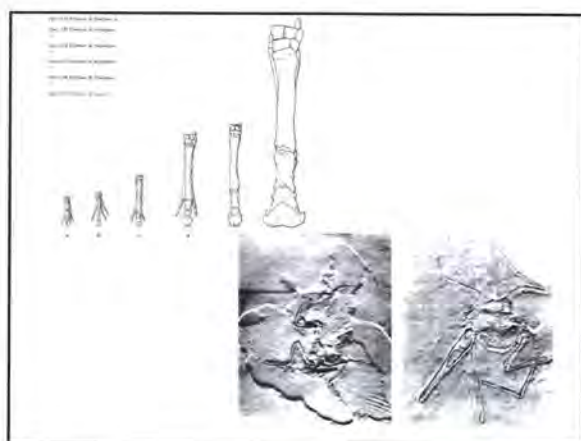
- How do they support evolution?

109

Evidence for Evolution - Fossils

- Types of fossil found in various strata are different.
- Further back in time, the more simple fossils are.
- Some fossils are completely unlike any species alive today.
- Present day forms are not preserved in the fossil record and so presumably did not exist in the past.
- Changing structure over time allows us to see the development of the species. Eg: horse leg.
- Some 'missing links' (transitional forms) have been found - eg: Archaeopteryx (birds and reptiles)

110

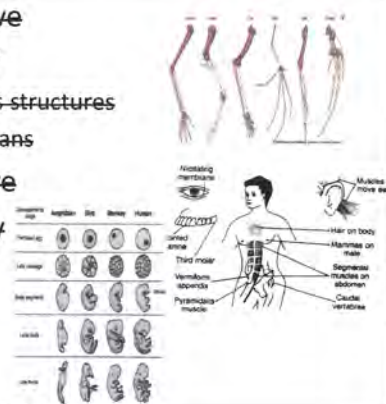


111

Comparative Anatomy

- Homologous structures
- Vestigial organs

Comparative Embryology



112

Comparative Proteins

- The **type** and **number** of **amino acids** in the sequence for **similar (ubiquitous) proteins** are compared between species.
- The greater the similarity - the closer the relationship.
- The greater the time between the common ancestor and the divergence into different species - the greater the difference in the amino acid sequence.
- Eg: cytochrome C used for respiration, haemoglobin.

113

Comparative Proteins



	human	monkey	pig	cow	sheep	horse	dog	rabbit	kangaroo
human	0	1	10	10	10	12	11	9	10
monkey		0	9	9	9	11	10	8	11
pig			0	0	0	3	3	4	6
cow				0	0	3	3	4	6
sheep					0	3	3	4	6
horse						0	3	4	7
dog							0	5	7
rabbit								0	6
kangaroo									0

114

Quick Test!

	human	monkey	pig	cow	sheep	horse	dog	rabbit	kangaroo
human	0	1	10	10	10	12	11	9	10
monkey		0	9	9	9	11	10	8	11
pig			0	0	0	3	3	4	6
cow				0	0	3	3	4	6
sheep					0	3	3	4	6
horse						0	3	4	7
dog							0	5	7
rabbit								0	6
kangaroo									0

115

Comparative DNA

- The more similar the DNA sequences of **nitrogen bases**, the more closely related the species are and the more recent the common ancestor.



Sites in DNA Sequence							
Species	1	2	3	4	5	6	7
I	A	G	C	A	A	G	T
II	G	G	A	A	G	G	T
III	G	A	C	T	A	C	T
IV	G	A	C	A	G	C	G

116

Mitochondrial DNA

- Inherited through the maternal line
- Is only 16,500 base pairs big
- Has a higher rate of mutation than that of nuclear DNA
- Used to identify relationships
- The greater the number of mutations the more distant the relative ancestor
- Eg: Neanderthals and using Cytochrome C

117

Dating Techniques - Relative

- Relative – will only identify whether a specimen is **older or younger** than another

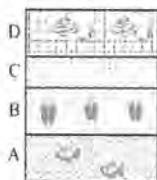
Eg:

- superposition (further down is older)
- stratigraphy / correlation of rock strata (compares different areas)
- index fossils (eg: pollen, short temporal and wide geographical distribution)

118

Quick Test!

rock strata from site 1



rock strata from site 2



- Which layer is the youngest? (1 mark)
- What specific technique have you used to answer it? (1 mark)
- What technique would be used to say the fish found in layers A and E are the same age? (1 mark)

119

Dating Techniques - Absolute

- Absolute – identifies the **actual age in years** of a specimen
- **Eg: Potassium argon –**
- $K40 \rightarrow Ca40 + Ar40$ (so Ar increases, K decreases)
- Half life 1,300 m.y
- Must be buried by volcanic ash (no argon)
- Dates 100,00-200,000 years **and older** (as not enough Ar to detect up to this point)
- Requires a rock of the same age

120

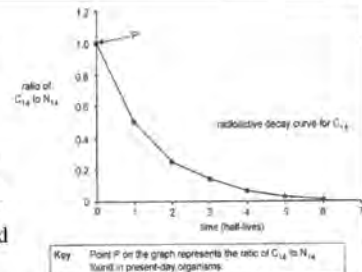
Dating Techniques – Absolute (con't)

- **Eg: Carbon 14 -**
- C14 formed from action of radiation on Nitrogen
- Measures the ratio of C14 to C12 (decreases)
- Half life 5730 yrs
- Only dates **up to 70,000 yrs**
(amount of C14 too small after this point)
- Must be organic (contain carbon)
- >3g in size
- Fossil must be destroyed to analyse
- Issues: C14 not the same everywhere in world / at different times through history

121

Quick Test!

A fossil kangaroo skull was found to contain one quarter of the carbon 14 of a kangaroo that died in 2012.

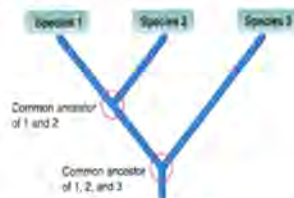


- Place an X on the curve to show the fossil's C14:N14 ratio. (1 mark)
- Given the half life of carbon is approximately 5,730 years, what is the approximate age in years of the fossil kangaroo skull? (1 mark)

122

Phylogenetic Trees

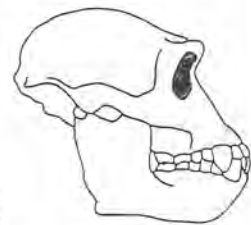
- Show relationships between species over time
- Nodes depict common ancestors
- The longer the branch the more time has elapsed



123

Australopithecus afarensis

- 4-2 mya
- 400cc
- No manufactured tools
- Herbivorous
- Prognathic, projecting canines, U shaped dental arcade, large cheek teeth, more anterior foramen magnum



124

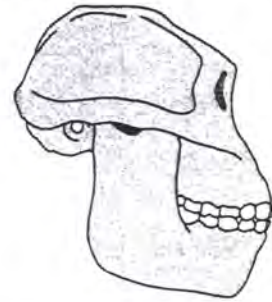
Australopithecus africanus



3-2 my
400-500cc
Prognathic jaw
large cheek teeth
small brow ridge
reduced prognathism
V shaped dental arcade
herbivorous
USED Oldowan tools

125

Paranthropus robustus

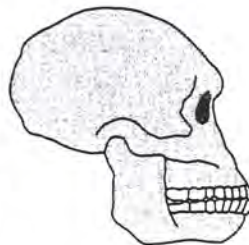


- 2 – 1 mya
- 520 cc
- No tools
- Sagittal crest, large zygomatic arches, large molars, large ramus

126

Homo habilis

- 2 – 1.5mya
- 500-800cc
- Oldowan tools
- Omnivorous
- Smaller brow, Broca's area, less prognathic, smaller teeth, parabolic dental arcade, central foramen magnum



127

Quick Test!

This skull most likely belongs to

- a) *Australopithecus afarensis*.
- b) *Australopithecus africanus*.
- c) *Paranthropus robustus*.
- d) *Homo habilis*.



128

Quick Test!

This skull most likely belongs to

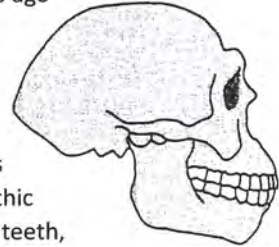
- a) *Australopithecus afarensis*.
- b) *Australopithecus africanus*.
- c) *Paranthropus robustus*.
- d) *Homo habilis*.



129

Homo erectus

- 1.8mya – 200,000 yrs ago
- 1000 cc
- Acheulean tools
- Omnivorous
- Fire
- Shelters - built, caves
- Sagittal keel, prognathic upper jaw, large cheek teeth, weak forehead



130

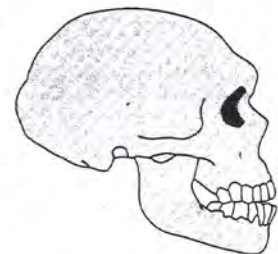
Homo erectus – sagittal keel



131

Homo neanderthalensis

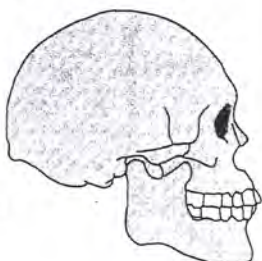
- 300,000-30,000 yrs ago
- 1500cc
- Europe
- Mousterian tools
- Nomadic hunting groups
- Shelters – built / caves
- Complex speech
- Buried dead, rituals
- Occipital bun, swept back face, no chin, curved brow ridge, weak forehead



132

Homo sapiens (Cro Magnon)

- 30,000-10,000 yrs ago
- 1330cc
- Aurignacian, Solutrean, and Magdalanian tools
- Mural and portable art
- Nomadic hunting groups
- Shelters – built / caves
- Religious rituals
- Chin present, strong forehead, weak brow ridge



133

Quick Test!

skull set 1



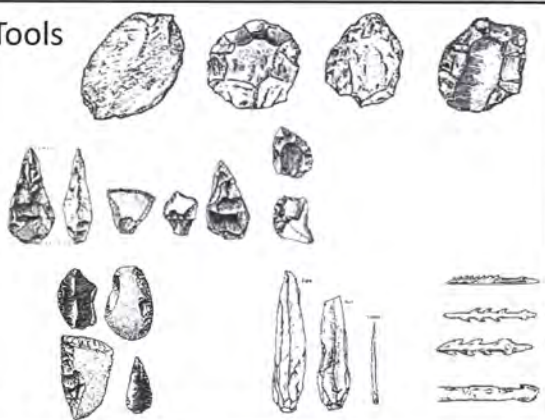
skull set 2



With reference to the images provided, which skull set represents the oldest species? Justify your choice. (3 marks)

134

Tools



135

Changes in Tools Over Time

- Few flakes/chips – many flakes / chips
- Large flakes / chips – small flakes / chips
- Used core as the tool – used flakes as the tool
- Chipped one edge – chipped all edges
- One tool for all tasks – tools specialised for tasks
- Only used rock – used rock, antler, bone, ivory
- Not attached - hafting
- No tools to make tools – burin used to make tools

136

Quick Test!

Which species is most likely to have created this tool?

- a) *Australopithecus afarensis*
- b) *Australopithecus africanus*
- c) *Paranthropus robustus*
- d) *Homo habilis*

(Bonus mark, what tool industry is it?)



137

Graphing

Title - include information from both axes
 Headings on each axis - titles with units
 Scales - take up at least half the graph paper
 Do not go outside the graph paper
 Use a ruler to connect points / draw bars
 Show actual data points clearly as dots or crosses
 Independent variable – on horizontal axis
 Dependent variable - on the vertical axis
 Can use pen!

138

Types of Graphs

- Line graphs – used when the data is continuous
 eg: time, volume, mass

Dots are connected by ruled straight lines

- Bar graphs – used when data is discrete eg:
 method of transport, seasons, car model

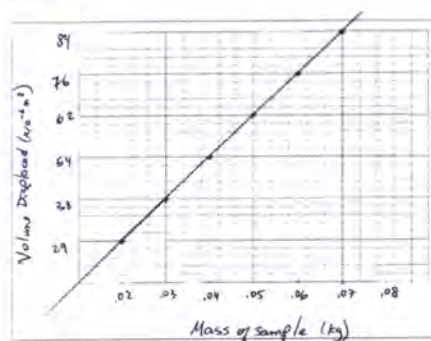
Data is in categories

Bars are separate

- Histograms – used when plotting data using frequencies

Bars are joined together

139

Quick Test!

140

Tricky Bits

- **Accuracy** – (**apparatus**) Is how well the DV is actually measured at the time, free from parallax error etc.
Improved by - Electronic devices, increasing the number of timers, having only one person read off the data, trained people collecting data
- **Reliability** – (**repetition**) is the extent to which the experiment gives the same results each time it is performed.
Improved by – Large numbers of subjects, repetition with the use of trials or repeat the experiment
- **Validity** – (**controlled variables**) when an experiment is fair, it tests what it was meant to test.
Improved by - all variables being controlled except the independent variable

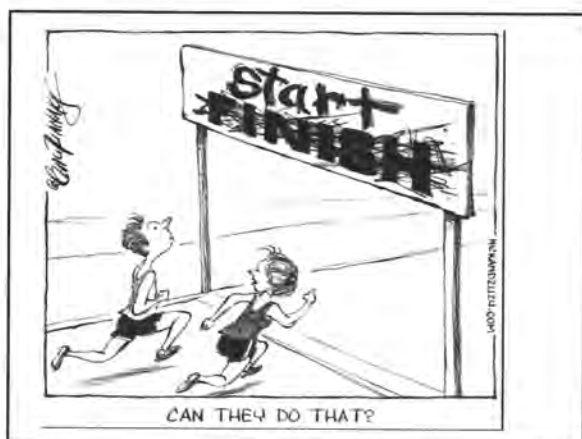
141

Quick Test!

Scientists selected 2 women who thought they might be osteoporotic and placed them into two different groups. Group 1 received 1400mg of calcium via a tablet every day and ate whatever they wanted. Group 2 received 1400mg of calcium via the only food they were allowed to eat which was given to them. A doctor interpreted an MRI scan that assessed their bone density.

Explain whether this is reliable, valid and accurate. (3 marks)

142



143